

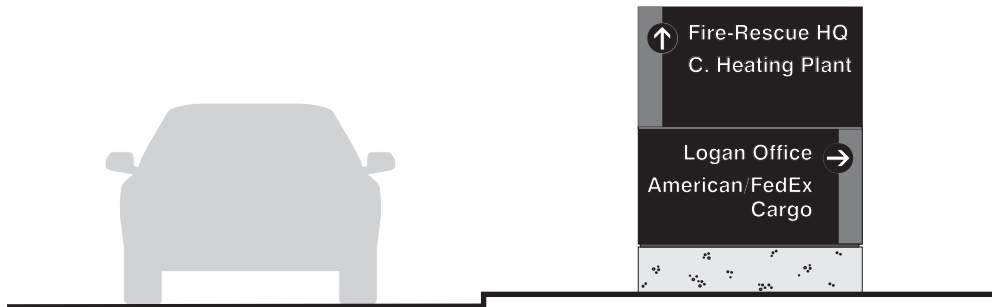
Directional - Primary: Support Roads

3.5.1

#	Revision	Date

Freestanding - One/Two Directional

ST - 501



- Description: Vehicular Roadside directional - 1 and 2 direction
- Overall Dimensions: 4'-8"L x 6'-0"H x 6"D
- Roadside perpendicular to vehicular traffic.
- Non Illuminated
- 4" Primary Cap Ht
- 0'-6" Arrow Size

3.0 SIGN TYPES - A.SERVICES



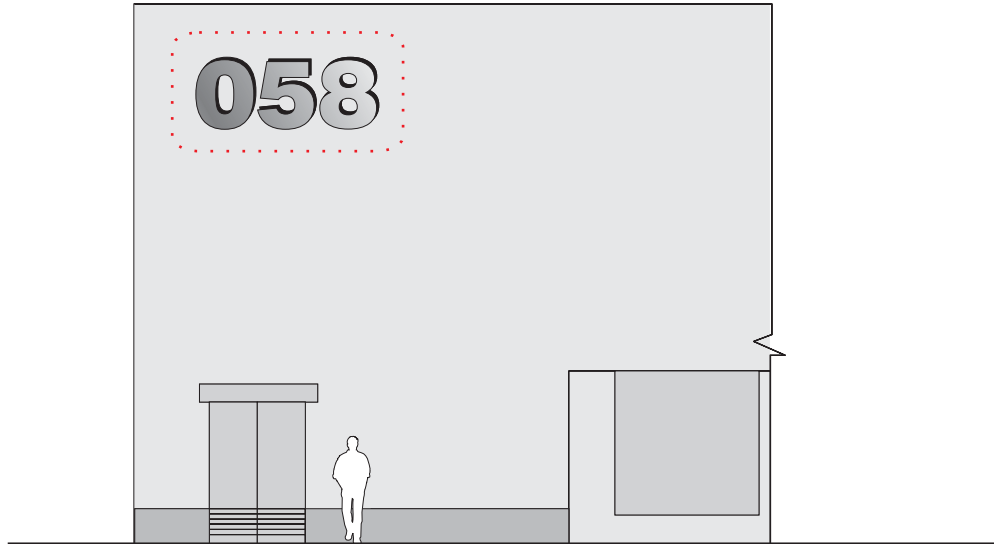
#	Revision	Date

Identification - Primary: All Airport Services Buildings

3.5.2

Wall Mount - Building ID (Facade)

ST - 551



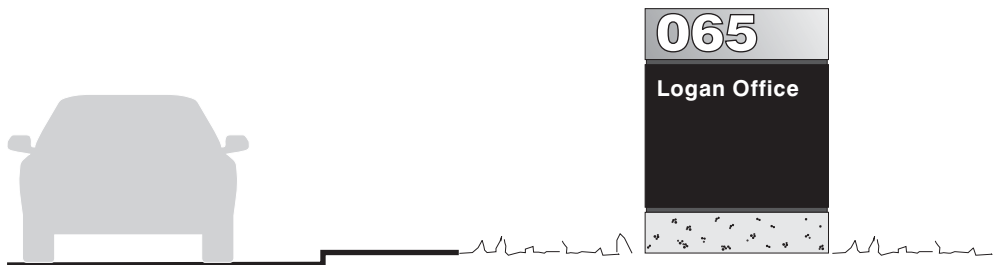
- Description: Vehicular Building Identification - Roadside
- Overall Dimensions: 4'-0"H
- Pin mount on Building facade
- Non Illuminated
- 6'-0" Primary Cap Ht

Identification - Secondary: All Airport Services Buildings

3.5.3

Freestanding - Building ID (Roadside)

ST - 552



- Description: Vehicular Building Identification - Roadside
- Overall Dimensions: 4'-8"L x 6'-0"H x 6"D
- Roadside perpendicular to vehicular traffic.
- Non Illuminated
- 4" Primary Cap Ht
- 1'-3" Building Number Cap Ht

3.0 SIGN TYPES - A.SERVICES



Identification - Secondary: All Airport Services

3.5.3

#	Revision	Date

Wall Mount - Building ID (Entry Door)

ST - 553



- Description: Pedestrian Entry Door Building Identification - Non Cargo Buildings
- Overall Dimensions: 2'-2"L x 2'-6"H x 1/4"D
- Wall mount on the building at the entrance door.
- Non Illuminated
- 1 1/2" Primary Cap Ht
- 3" Building Number Cap Ht

3.0 SIGN TYPES - A.SERVICES



