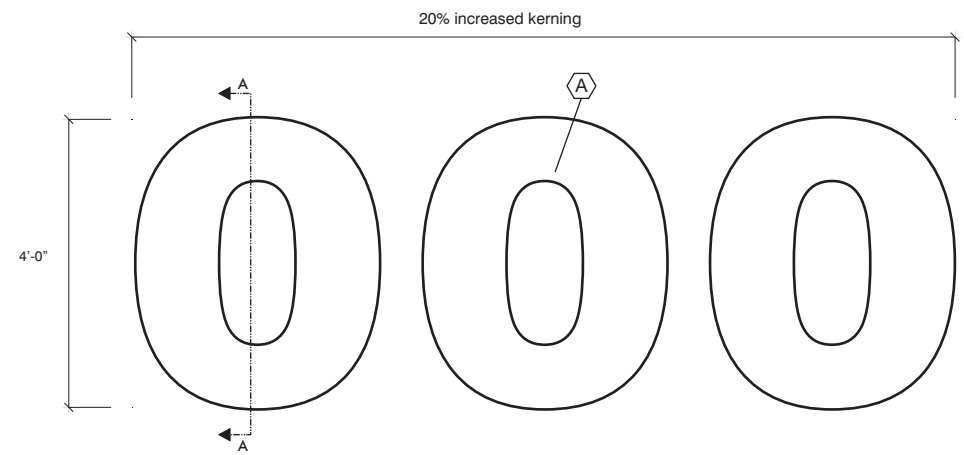
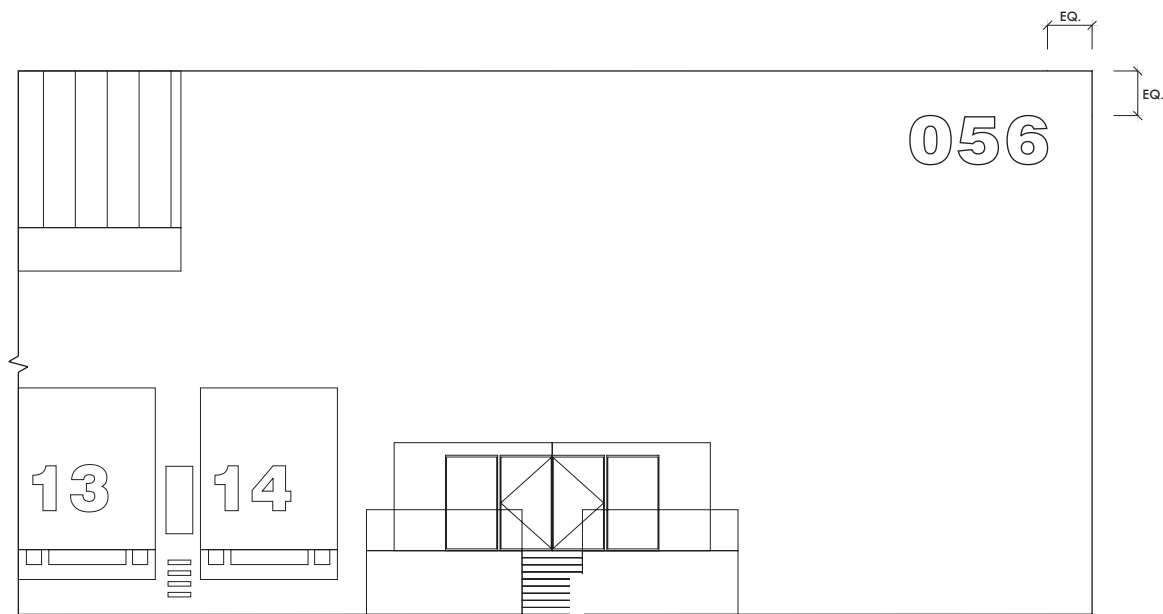


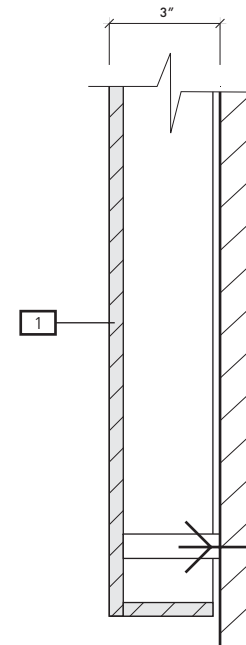
#	Revision	Date



SIGN FACE LAYOUT
Scale: 3/8"=1'-0"



ELEVATION
Scale: N. T. S.



DETAIL A - A (For Design Intent Only)
Scale: N. T. S.

Wall Mount

ST - 551

DESCRIPTION: Vehicular Facade - Building ID.

LOCATION: Mounted at top of building facade left/right justified at building corners.

MATERIALS: Aluminum dimensional plate letters.

LETTERING:
 (A) Swiss721 Black BT
 (B) Swiss721 BT Bold

SYMBOLGY: N/A

- COLORS:**
- (1) Background: Paint Black Matthew's Paint #78A-1A or approved equal (Jet Black)
 - (2) Text: 3M Diamond Grade Film #3990 or approved equal (White)
 - (3) Band: Paint to match PMS425C (Grey)
 - (4) Arrow: 3M Diamond Grade Film #3990 or approved equal (White)
 - (5) Arrow Circle: Paint Black Matthew's Paint #78A-1A or approved equal (Jet Black)
 - (6) Header Panel: Paint Matthew's Paint #41-342 Brushed Aluminum
 - (7) Reveal: Paint to match PMS425C (Grey)

GRAPHICS: N/A

ARROWS: N/A

MOUNTING: Pin Mounted.

ILLUMINATION: Sign will be non illuminated.

REMARKS: Refer to Section 2.5 for vinyl specifications.

NOTES:

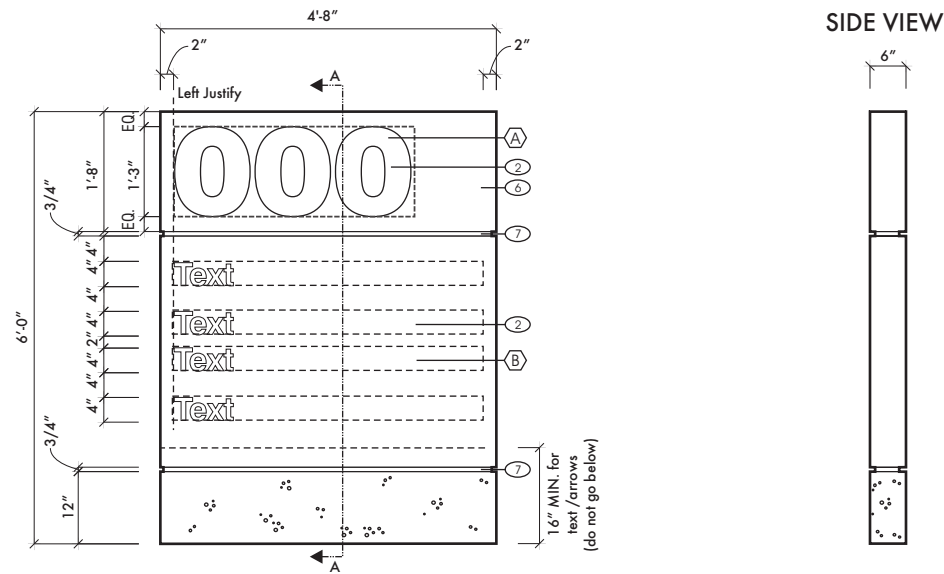
- (1) Aluminum dimensional plate letter, painted first surface and returns, matte finish. Mechanically attach second surface from spacer posts to building fascia / wall.

Identification - Primary

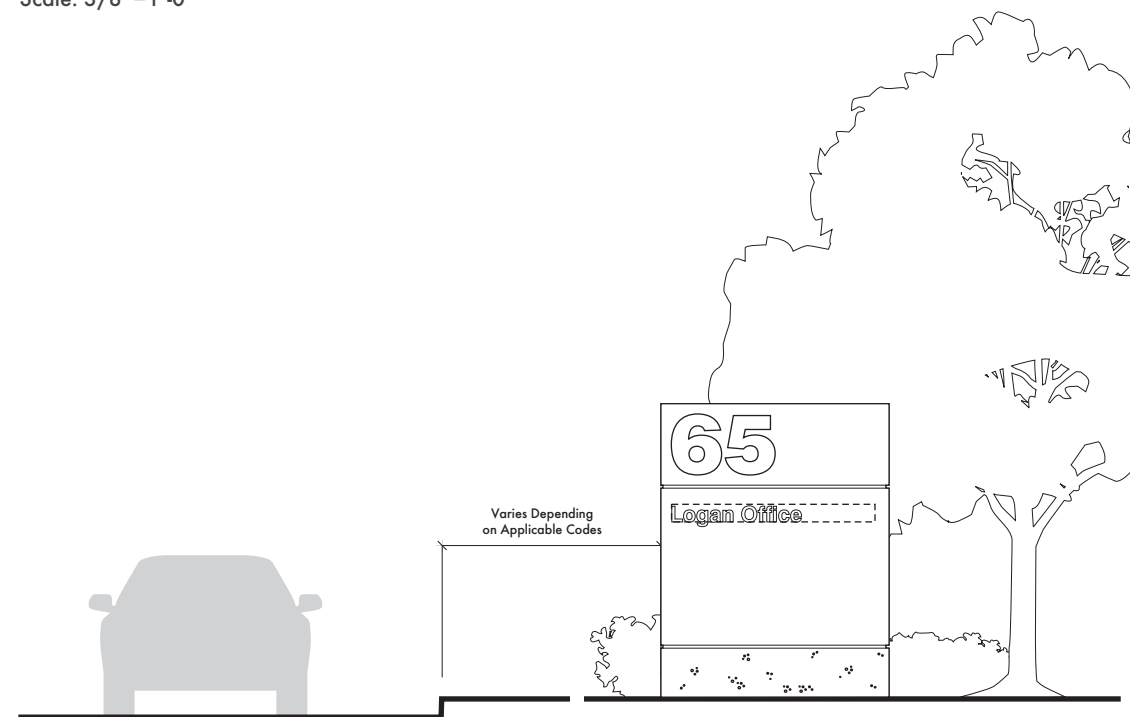
3.6.2



#	Revision	Date

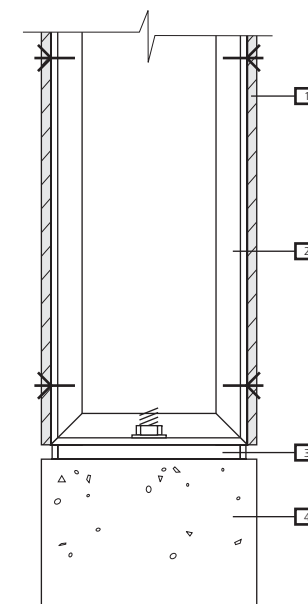


SIGN FACE LAYOUT
Scale: 3/8"=1'-0"



ELEVATION
Scale: N. T. S.

DETAIL A-A (For Design Intent Only)
Scale: N. T. S.



Freestanding

ST - 552

DESCRIPTION: Vehicular Roadside-Building ID.

LOCATION: Roadside perpendicular to vehicular traffic.

MATERIALS: Aluminum sign face structure with cast in place concrete footer.

LETTERING:
 (A) Swiss721 Black BT
 (B) Swiss721 BT Bold

SYMBOLGY: N/A

COLORS:
 (1) Background: Paint Black Matthew's Paint #78A-1A or approved equal (Jet Black)
 (2) Text: 3M Diamond Grade Film #3990 or approved equal (White)
 (3) Band: Paint to match PMS425C (Grey)
 (4) Arrow: 3M Diamond Grade Film #3990 or approved equal (White)
 (5) Arrow Circle: Paint Black Matthew's Paint #78A-1A or approved equal (Jet Black)
 (6) Header Panel: Paint Matthew's Paint #41-342 Brushed Aluminum
 (7) Reveal: Paint to match PMS425C (Grey)

GRAPHICS: N/A

ARROWS: N/A

MOUNTING: Freestanding

ILLUMINATION: Sign will be non illuminated.

NOTES:

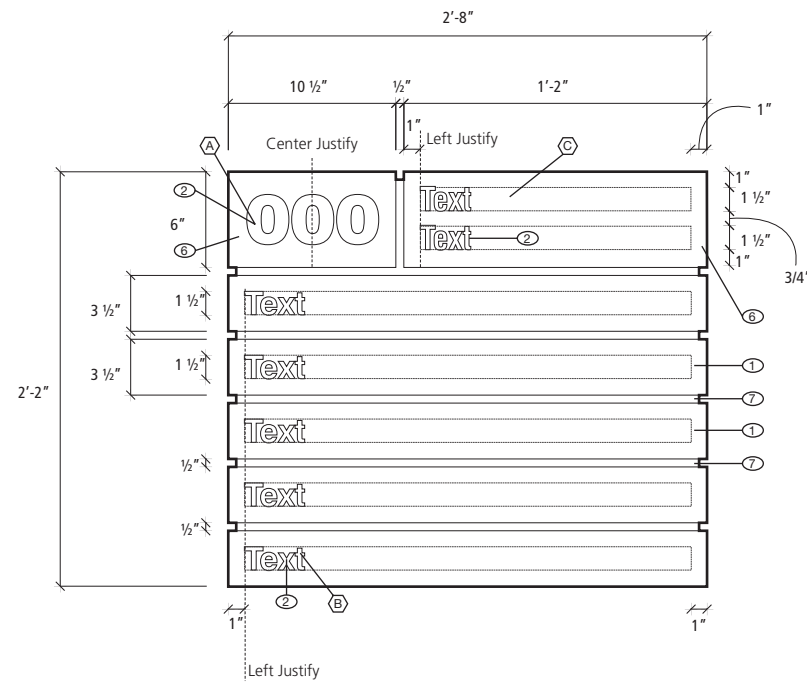
- 1 .060 (1/8") aluminum sign face and side returns with machine cut top edge as shown. Paint sign faces and side returns first surface, matte finish. Message copy and arrows to be 3M Reflective film applied first surface (see color specification above). Mechanically attach to channel frame structure with countersunk screws, paint to match face
- 2 Aluminum channel frame cabinet. Mechanically attach to concrete base with appropriately sized cast-in-place thru-bolts (must be breakaway capable).
- 3 Break-formed two piece aluminum spacer reveal.
- 4 Cast-in-place concrete footer.

Identification - Secondary

3.6.2

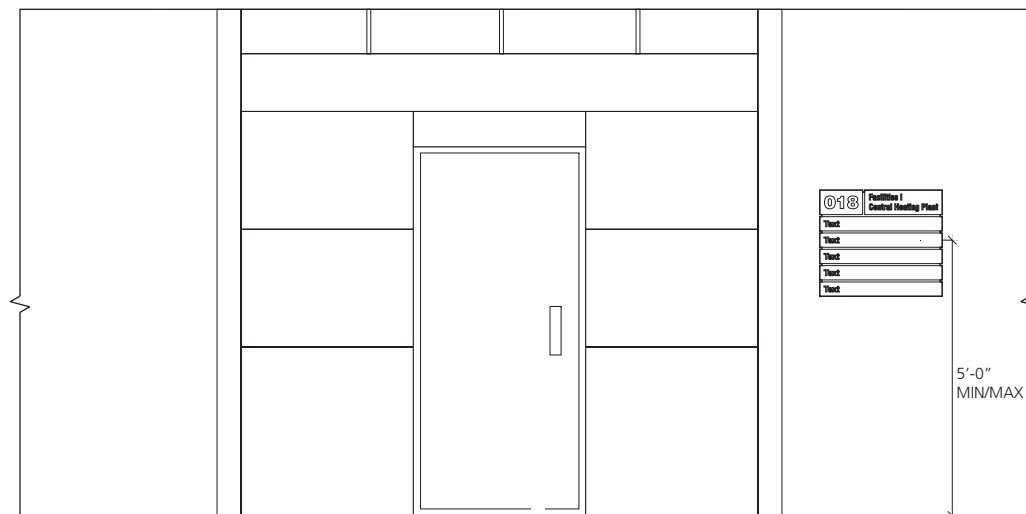


#	Revision	Date



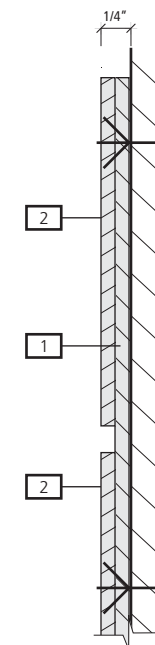
SIGN FACE LAYOUT

Scale: 1"=1'-0"



ELEVATION

Scale: N. T. S.



DETAIL A - A (For Design Intent Only)

Scale: N. T. S.

Wall Mount

ST - 553

DESCRIPTION: Pedestrian Entry Door/Building Identification.

LOCATION: At primary entry doors to all support facility buildings.

MATERIALS: Photo polymer sign face with vinyl graphics.

LETTERING:

- Ⓐ Swiss721 Black BT
- Ⓑ Swiss721 BT Bold
- Ⓒ Swiss721 BT Condensed

SYMBOLOLOGY: N/A

COLORS:

- ① Background: Paint Black Matthew's Paint #78A-1A or approved equal (Jet Black)
- ② Text: 3M Vinyl # or approved equal to match Massport Blue.
- ③ Band: Paint to match PMS425C (Grey)
- ④ Arrow: 3M Diamond Grade Film #3990 or approved equal (White)
- ⑤ Arrow Circle: Paint Black Matthew's Paint #78A-1A or approved equal (Jet Black)
- ⑥ Header Panel: Paint Matthew's Paint #41-342 Brushed Aluminum
- ⑦ Reveal: Paint to match PMS425C (Grey)

GRAPHICS: N/A

ARROWS: N/A

MOUNTING: Wall Mounted.

ILLUMINATION: Sign will be non illuminated.

REMARKS: Refer to Section 2.5 for vinyl specifications.

NOTES:

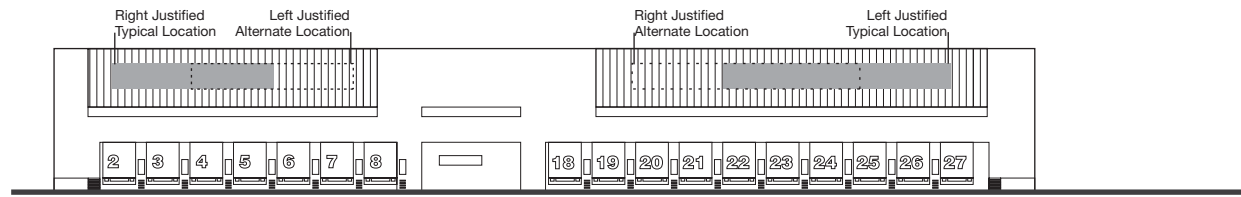
- 1 .060 (1/8") photo-polymer sign face. Paint sign faces and side returns surface, matte finish.
- 2 .060 (1/8") photo-polymer sign face. Sign faces and side returns surface matte finish or aluminum as specified in above. Message copy to be 3M Reflective film applied first surface (see color specification above). Tenant logo artwork provided by others. Mechanically attach to wall.

Identification - Secondary

3.6.2

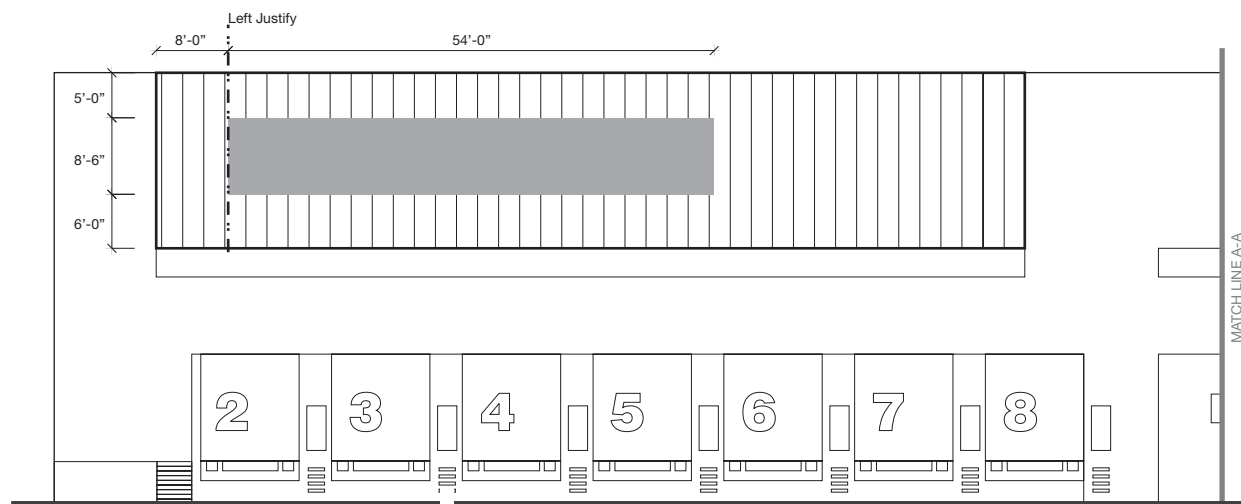


#	Revision	Date



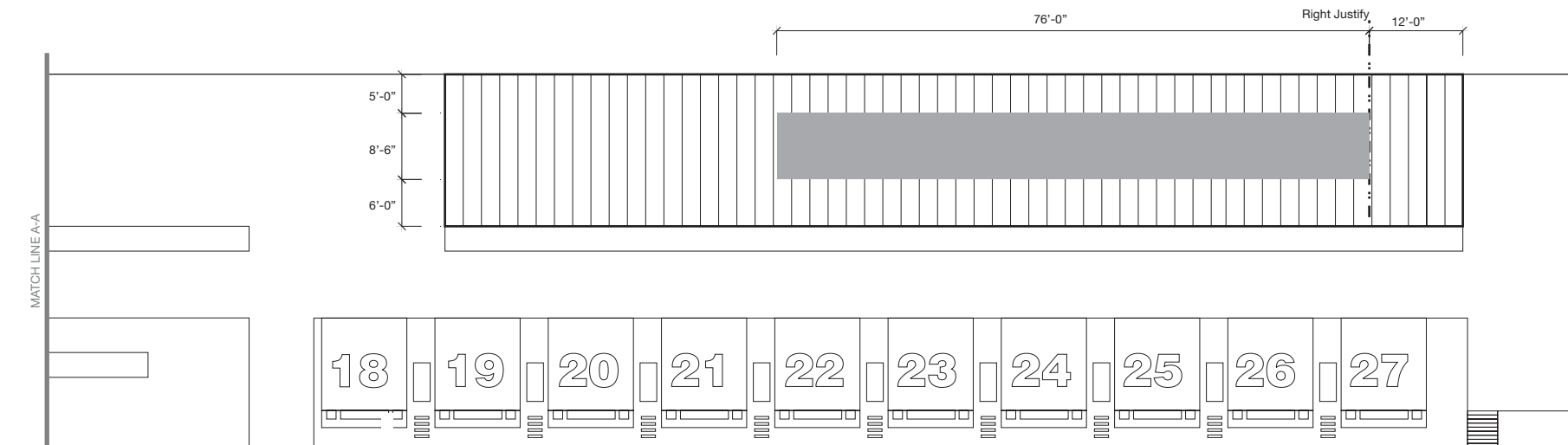
OVERALL ELEVATION - BUILDING 56: Single Tenant per section

Scale: N. T. S.



PARTIAL ELEVATION - BUILDING 56

Scale: N. T. S



PARTIAL ELEVATION - BUILDING 56

Scale: N. T. S.

Wall Mount

ST - 561

DESCRIPTION: Vehicular Tenant Identification for Building 56 - Single Tenant per section.

LOCATION: On building facade as shown in this layout.

MATERIALS: N/A

LETTERING:
 A Swiss721 Black BT
 B Swiss721 BT Bold

SYMBOLGY: N/A

- COLORS:**
- 1 Background: Paint Black Matthew's Paint #78A-1A or approved equal (Jet Black)
 - 2 Text: 3M Diamond Grade Film #3990 or approved equal (White)
 - 3 Band: Paint to match PMS425C (Grey)
 - 4 Arrow: 3M Diamond Grade Film #3990 or approved equal (White)
 - 5 Arrow Circle: Paint Black Matthew's Paint #78A-1A or approved equal (Jet Black)
 - 6 Header Panel: Paint Matthew's Paint #41-342 Brushed Aluminum
 - 7 Reveal: Paint to match PMS425C (Grey)

GRAPHICS: Logo Artwork to be provided by each Tenant.

ARROWS: N/A

MOUNTING: Wall Mounted.

ILLUMINATION: N/A

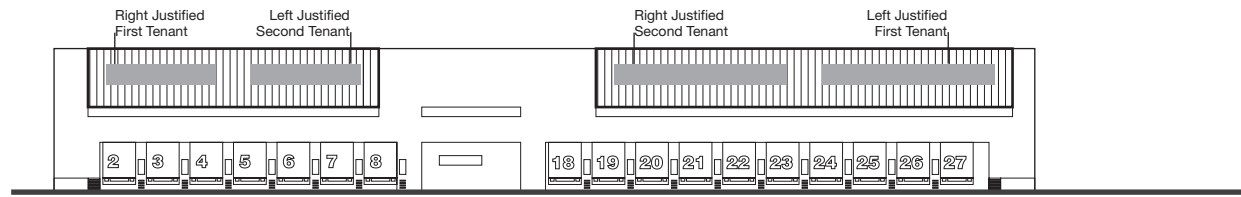
REMARKS: Refer to Section 2.5 for vinyl specifications.

Identification - Secondary

3.6.2

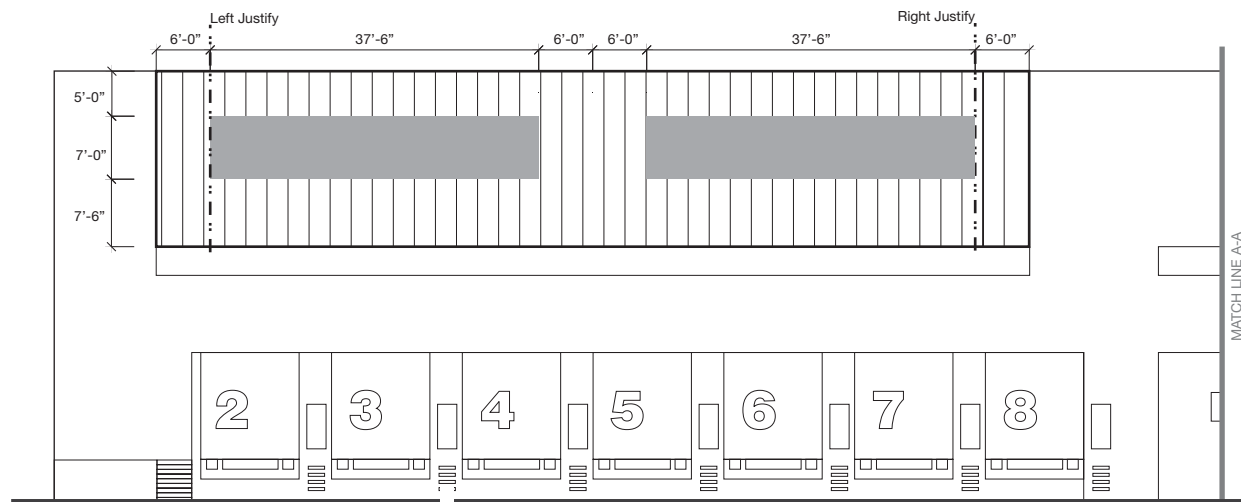


#	Revision	Date



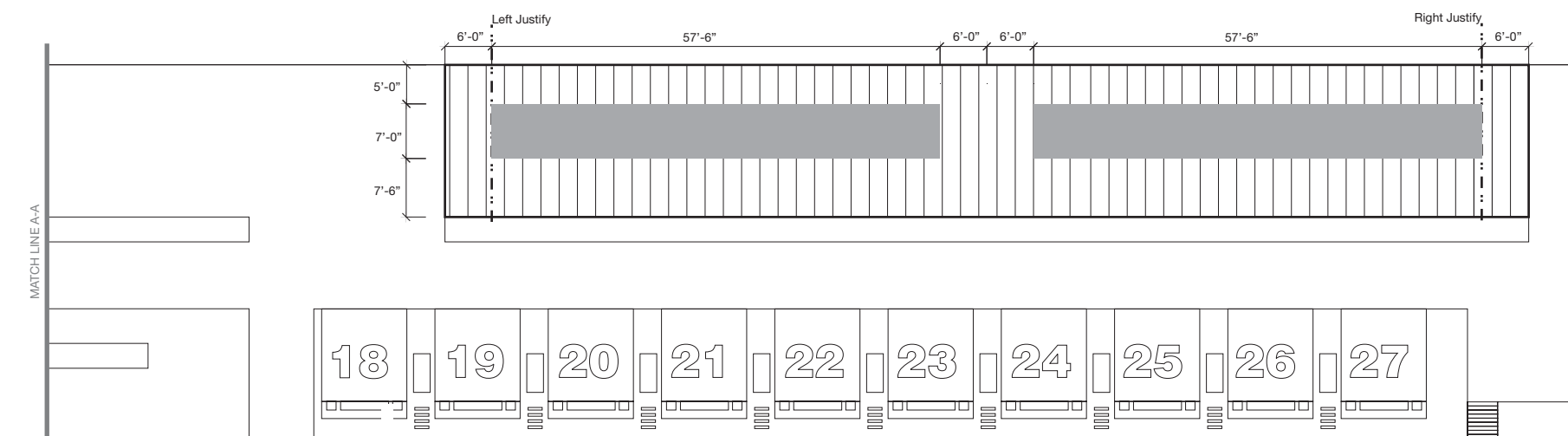
OVERALL ELEVATION - BUILDING 56: Multiple Tenants per section

Scale: N. T. S.



PARTIAL ELEVATION - BUILDING 56

Scale: N. T. S



PARTIAL ELEVATION - BUILDING 56

Scale: N. T. S.

Wall Mount

ST - 561

DESCRIPTION: Vehicular Tenant Identification for Building 56 - Multiple Tenants per section.

LOCATION: On building facade as shown in this layout.

MATERIALS: N/A

LETTERING:
 A Swiss721 Black BT
 B Swiss721 BT Bold

SYMBOLGY: N/A

- COLORS:**
- 1 Background: Paint Black Matthew's Paint #78A-1A or approved equal (Jet Black)
 - 2 Text: 3M Diamond Grade Film #3990 or approved equal (White)
 - 3 Band: Paint to match PMS425C (Grey)
 - 4 Arrow: 3M Diamond Grade Film #3990 or approved equal (White)
 - 5 Arrow Circle: Paint Black Matthew's Paint #78A-1A or approved equal (Jet Black)
 - 6 Header Panel: Paint Matthew's Paint #41-342 Brushed Aluminum
 - 7 Reveal: Paint to match PMS425C (Grey)

GRAPHICS: Logo Artwork to be provided by each Tenant.

ARROWS: N/A

MOUNTING: Wall Mounted.

ILLUMINATION: N/A

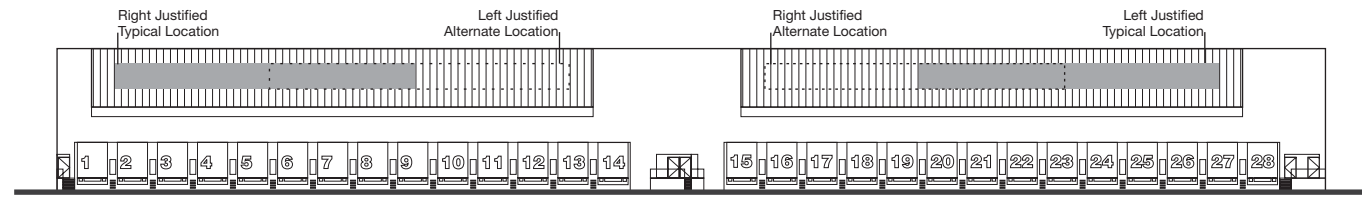
REMARKS: Refer to Section 2.5 for vinyl specifications.

Identification - Secondary

3.6.2

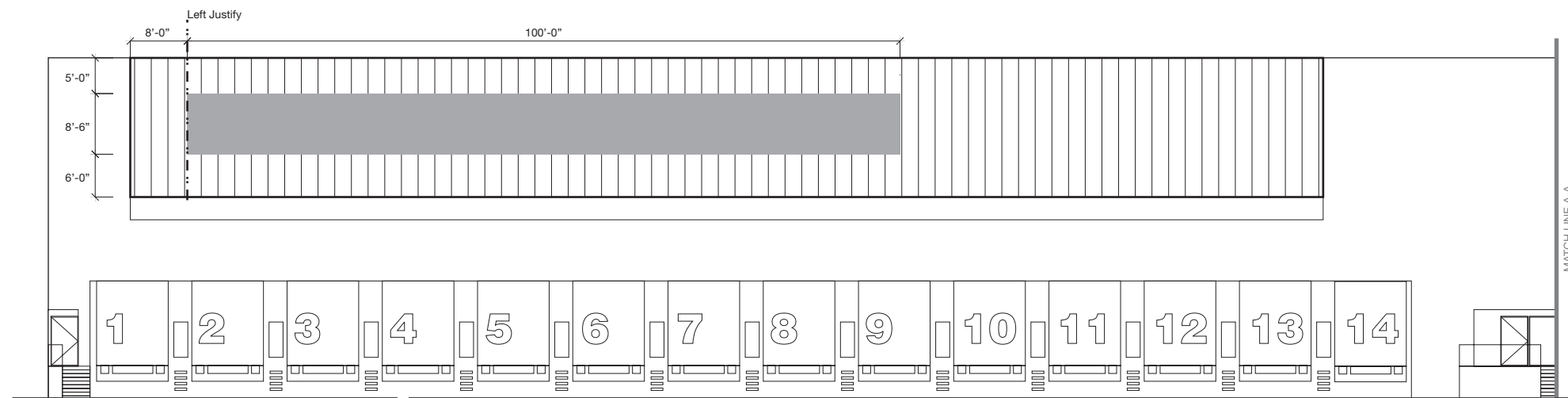


#	Revision	Date



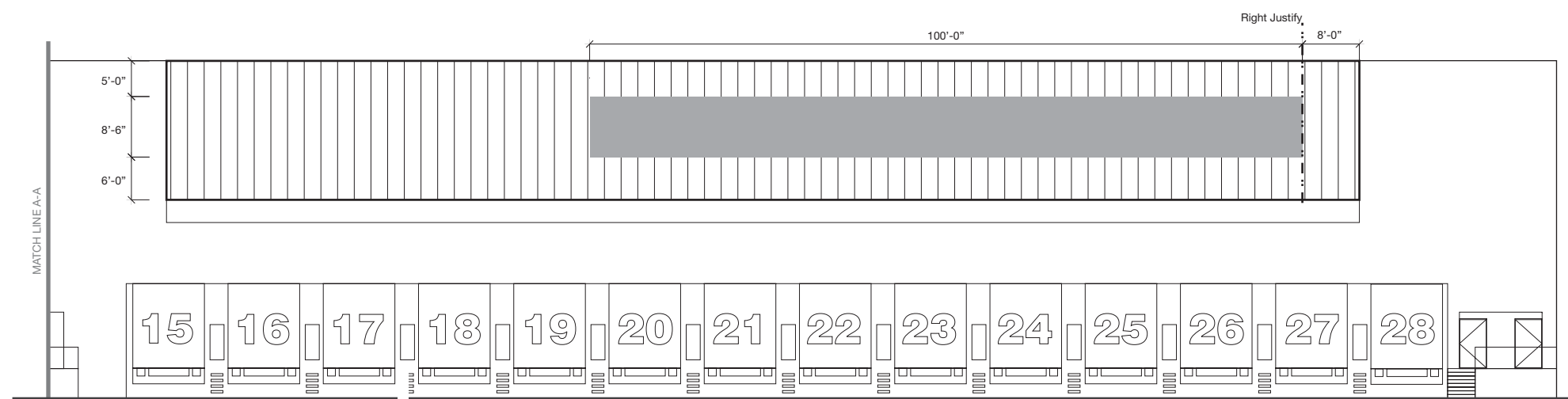
OVERALL ELEVATION - BUILDING 57 and 58: Single Tenant per section

Scale: N. T. S.



PARTIAL ELEVATION - BUILDING 57 and 58

Scale: N. T. S.



PARTIAL ELEVATION - BUILDING 57 and 58

Scale: N. T. S.

Wall Mount

ST - 561

DESCRIPTION: Vehicular Tenant Identification for Building 57 and 58 - Single Tenant per section.

LOCATION: On building facade as shown in this layout.

MATERIALS: N/A

LETTERING:

- Ⓐ Swiss721 Black BT
- Ⓑ Swiss721 BT Bold

SYMBOLGY: N/A

COLORS:

- ① Background: Paint Black Matthew's Paint #78A-1A or approved equal (Jet Black)
- ② Text: 3M Diamond Grade Film #3990 or approved equal (White)
- ③ Band: Paint to match PMS425C (Grey)
- ④ Arrow: 3M Diamond Grade Film #3990 or approved equal (White)
- ⑤ Arrow Circle: Paint Black Matthew's Paint #78A-1A or approved equal (Jet Black)
- ⑥ Header Panel: Paint Matthew's Paint #41-342 Brushed Aluminum
- ⑦ Reveal: Paint to match PMS425C (Grey)

GRAPHICS: Logo Artwork to be provided by each Tenant.

ARROWS: N/A

MOUNTING: Wall Mounted.

ILLUMINATION: N/A

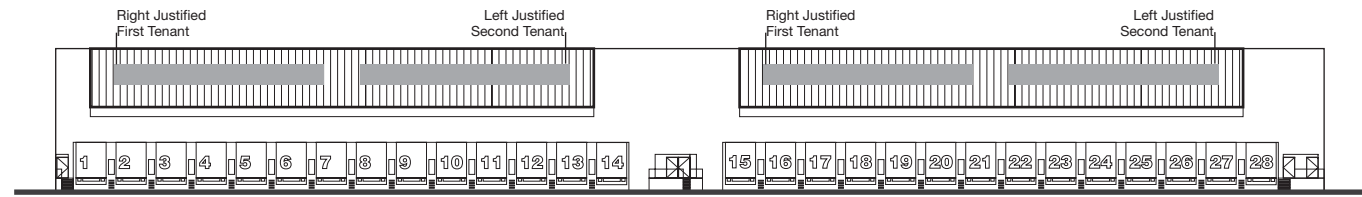
REMARKS: Refer to Section 2.5 for vinyl specifications.

Identification - Secondary

3.6.2

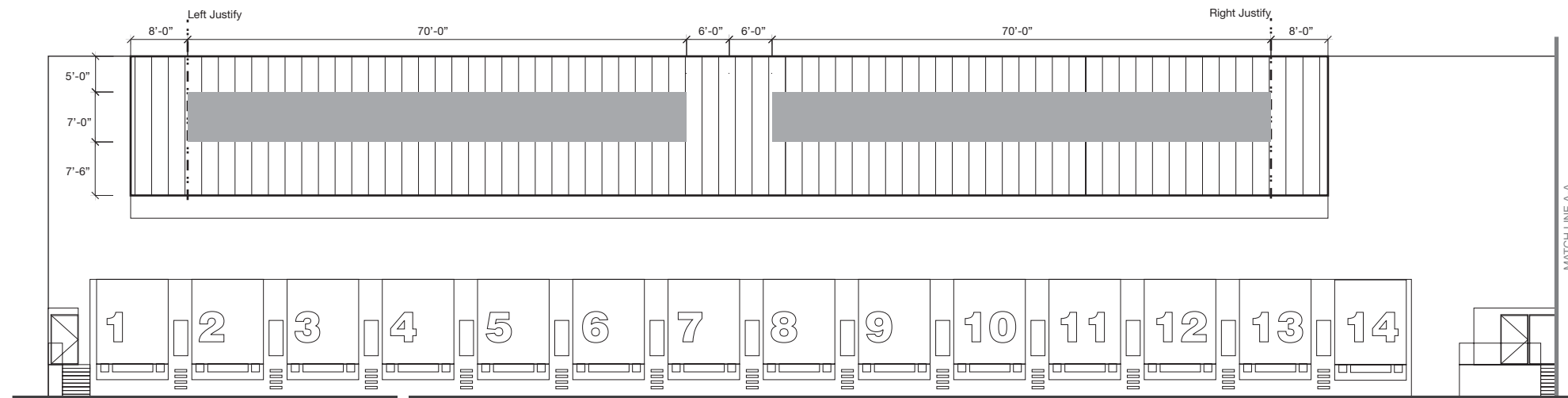


#	Revision	Date



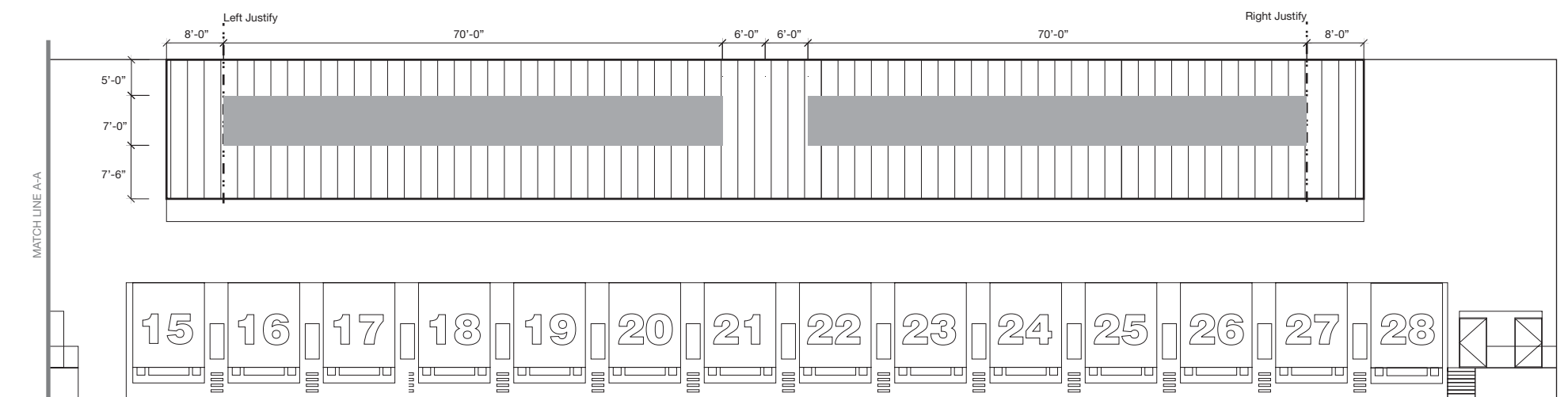
OVERALL ELEVATION - BUILDING 57 and 58: Multiple Tenants per section

Scale: N. T. S.



PARTIAL ELEVATION - BUILDING 57 and 58

Scale: N. T. S.



PARTIAL ELEVATION - BUILDING 57 and 58

Scale: N. T. S.

Wall Mount

ST - 561

DESCRIPTION: Vehicular Tenant Identification for Building 57 and 58 - Multiple Tenants per section.

LOCATION: On building facade as shown in this layout.

MATERIALS: N/A

LETTERING:
 Ⓐ Swiss721 Black BT
 Ⓑ Swiss721 BT Bold

SYMBOLGY: N/A

- COLORS:**
- ① Background: Paint Black Matthew's Paint #78A-1A or approved equal (Jet Black)
 - ② Text: 3M Diamond Grade Film #3990 or approved equal (White)
 - ③ Band: Paint to match PMS425C (Grey)
 - ④ Arrow: 3M Diamond Grade Film #3990 or approved equal (White)
 - ⑤ Arrow Circle: Paint Black Matthew's Paint #78A-1A or approved equal (Jet Black)
 - ⑥ Header Panel: Paint Matthew's Paint #41-342 Brushed Aluminum
 - ⑦ Reveal: Paint to match PMS425C (Grey)

GRAPHICS: Logo Artwork to be provided by each Tenant.

ARROWS: N/A

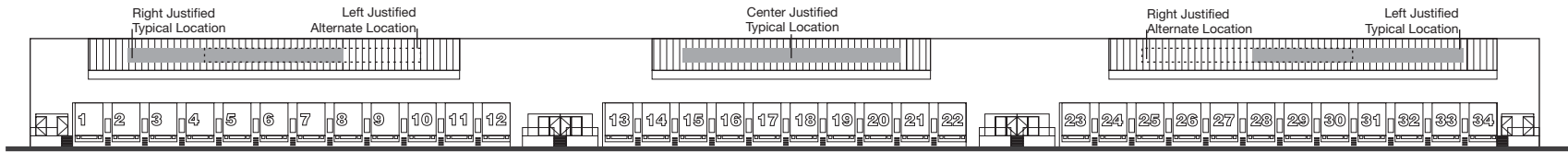
MOUNTING: Wall Mounted.

ILLUMINATION: N/A

REMARKS: Refer to Section 2.5 for vinyl specifications.

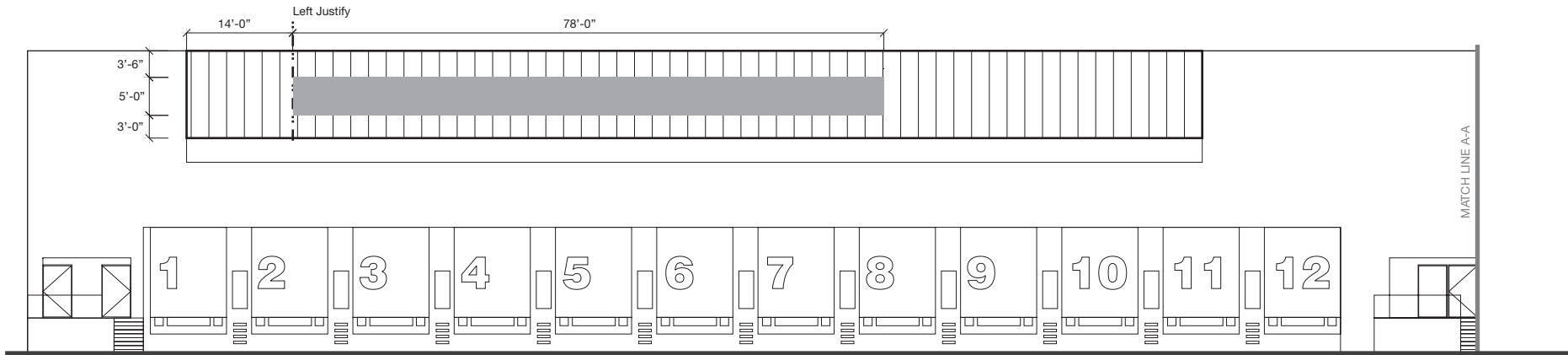


#	Revision	Date



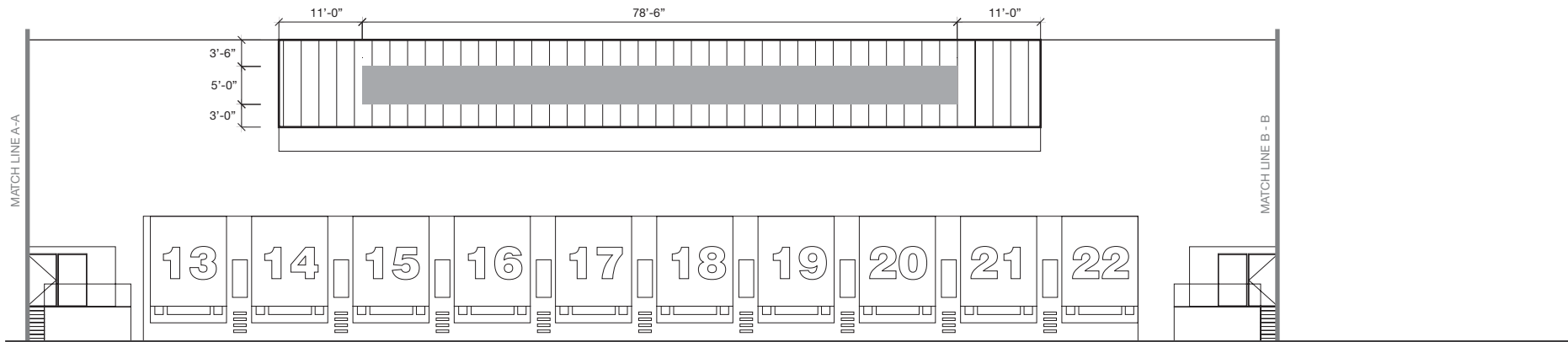
OVERALL ELEVATION - BUILDING 61: Single Tenant per section

Scale: N. T. S.



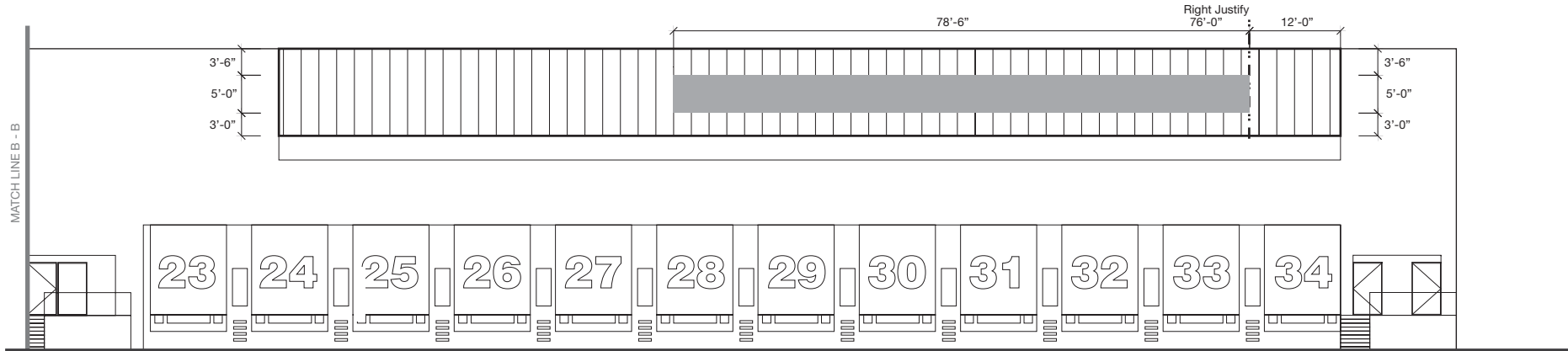
PARTIAL ELEVATION - BUILDING 61

Scale: N. T. S.



PARTIAL ELEVATION - BUILDING 61

Scale: N. T. S.



PARTIAL ELEVATION - BUILDING 61

Scale: N. T. S.

Wall Mount

ST - 561

DESCRIPTION: Vehicular Tenant Identification for Building 61 - Single Tenant per section.

LOCATION: On building facade as shown in this layout.

MATERIALS: N/A

LETTERING:
 A Swiss721 Black BT
 B Swiss721 BT Bold

SYMBOLGY: N/A

- COLORS:**
- 1 Background: Paint Black Matthew's Paint #78A-1A or approved equal (Jet Black)
 - 2 Text: 3M Diamond Grade Film #3990 or approved equal (White)
 - 3 Band: Paint to match PMS425C (Grey)
 - 4 Arrow: 3M Diamond Grade Film #3990 or approved equal (White)
 - 5 Arrow Circle: Paint Black Matthew's Paint #78A-1A or approved equal (Jet Black)
 - 6 Header Panel: Paint Matthew's Paint #41-342 Brushed Aluminum
 - 7 Reveal: Paint to match PMS425C (Grey)

GRAPHICS: Logo Artwork to be provided by each Tenant.

ARROWS: N/A

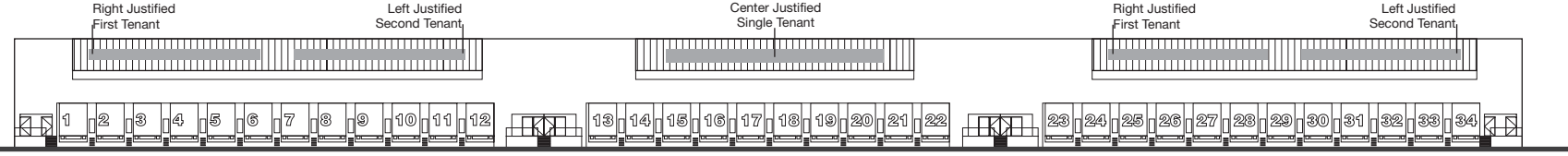
MOUNTING: Wall Mounted.

ILLUMINATION: N/A

REMARKS: Refer to Section 2.5 for vinyl specifications.

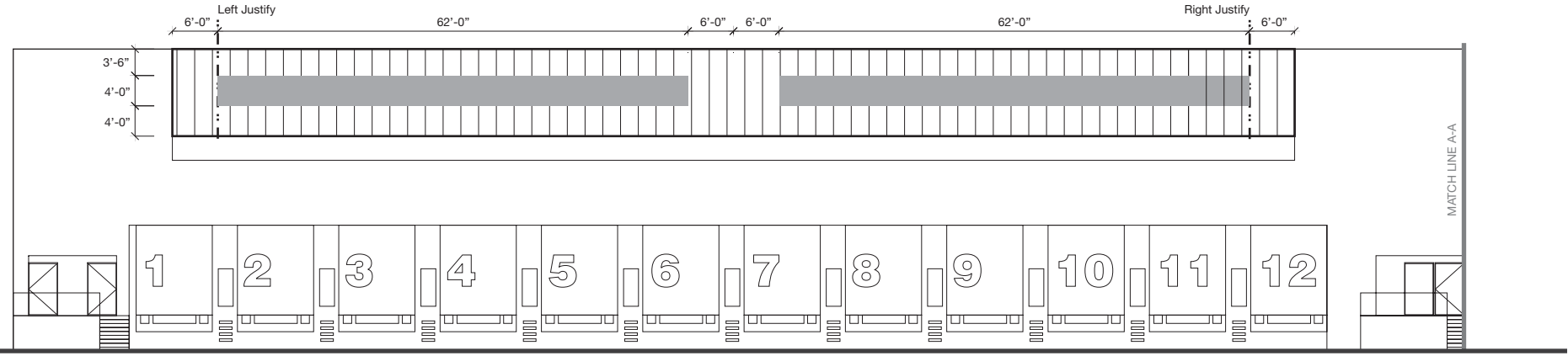


#	Revision	Date



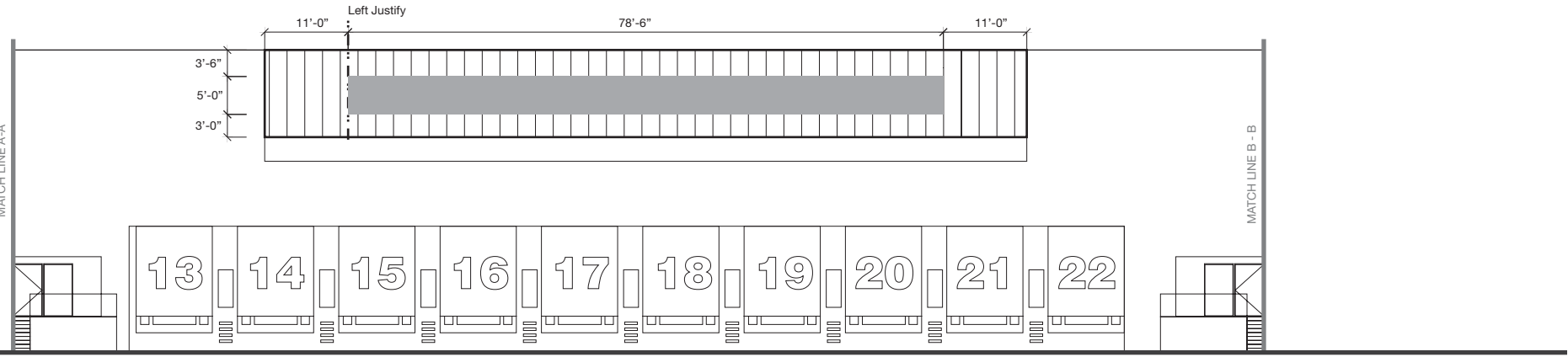
OVERALL ELEVATION - BUILDING 61: Multiple Tenants per section

Scale: N. T. S.



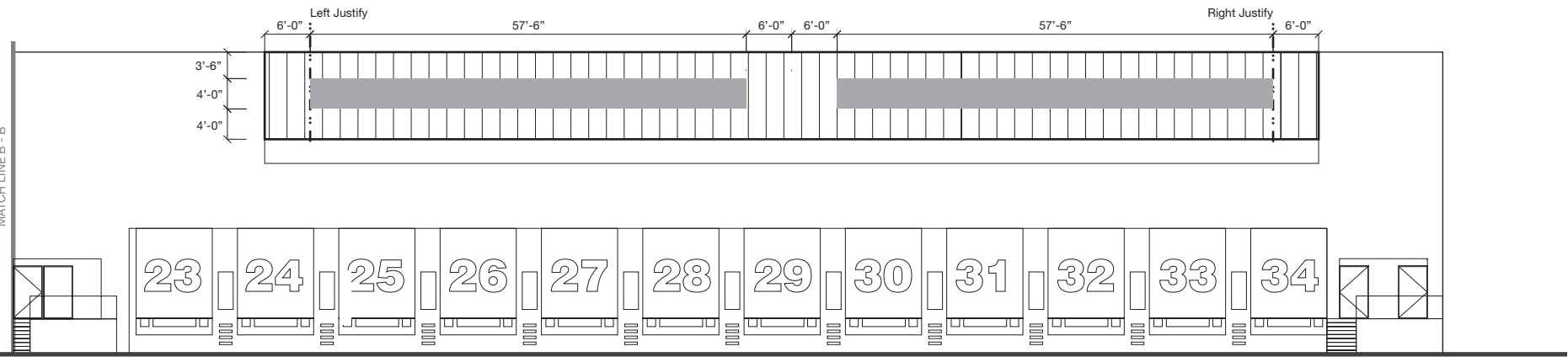
PARTIAL ELEVATION - BUILDING 61

Scale: N. T. S.



PARTIAL ELEVATION - BUILDING 61

Scale: N. T. S.



PARTIAL ELEVATION - BUILDING 61

Scale: N. T. S.

Wall Mount

ST - 561

DESCRIPTION: Vehicular Tenant Identification for Building 61 - Multiple Tenants per section.

LOCATION: On building facade as shown in this layout.

MATERIALS: N/A

LETTERING:
 A Swiss721 Black BT
 B Swiss721 BT Bold

SYMBOLGY: N/A

- COLORS:**
- 1 Background: Paint Black Matthew's Paint #78A-1A or approved equal (Jet Black)
 - 2 Text: 3M Diamond Grade Film #3990 or approved equal (White)
 - 3 Band: Paint to match PMS425C (Grey)
 - 4 Arrow: 3M Diamond Grade Film #3990 or approved equal (White)
 - 5 Arrow Circle: Paint Black Matthew's Paint #78A-1A or approved equal (Jet Black)
 - 6 Header Panel: Paint Matthew's Paint #41-342 Brushed Aluminum
 - 7 Reveal: Paint to match PMS425C (Grey)

GRAPHICS: Logo Artwork to be provided by each Tenant.

ARROWS: N/A

MOUNTING: Wall Mounted.

ILLUMINATION: N/A

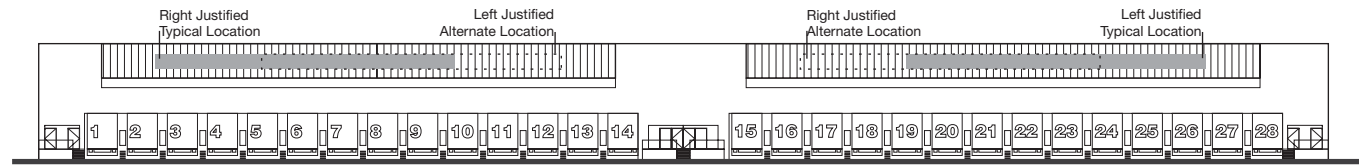
REMARKS: Refer to Section 2.5 for vinyl specifications.

Identification - Secondary

3.6.2

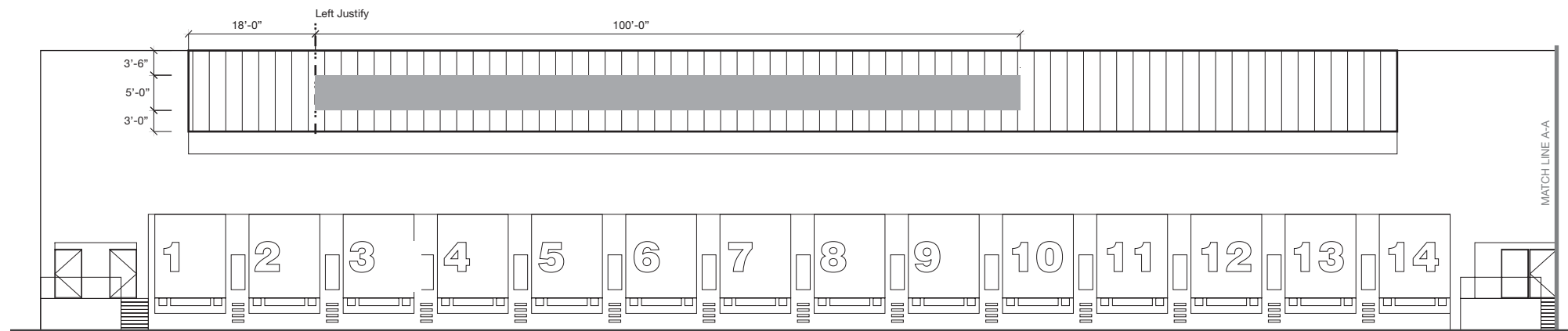


#	Revision	Date



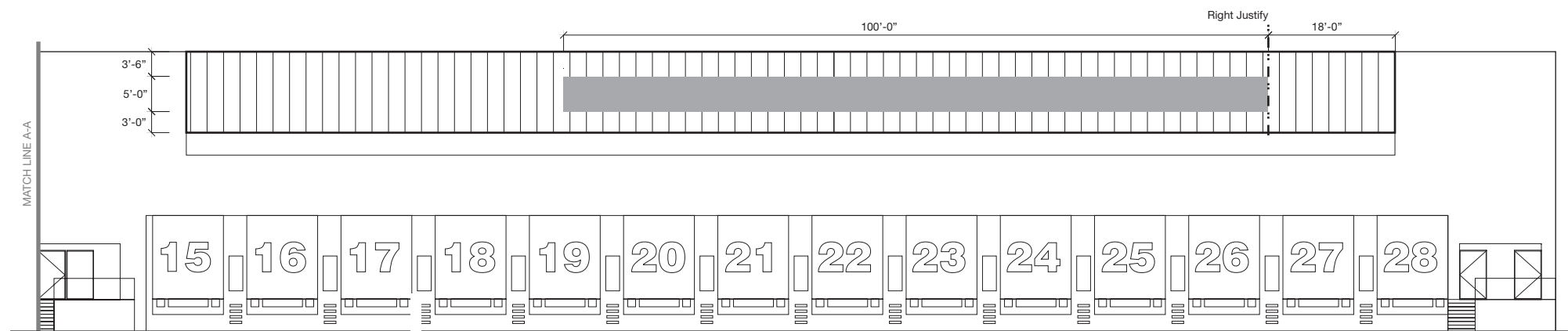
OVERALL ELEVATION - BUILDING 62: Single Tenant per section

Scale: N. T. S.



PARTIAL ELEVATION - BUILDING 62

Scale: N. T. S.



PARTIAL ELEVATION - BUILDING 62

Scale: N. T. S.

Wall Mount

ST - 561

DESCRIPTION: Vehicular Tenant Identification for Building 62 - Single Tenant per section.

LOCATION: On building facade as shown in this layout.

MATERIALS: N/A

LETTERING:
 A Swiss721 Black BT
 B Swiss721 BT Bold

SYMBOLGY: N/A

- COLORS:**
- 1 Background: Paint Black Matthew's Paint #78A-1A or approved equal (Jet Black)
 - 2 Text: 3M Diamond Grade Film #3990 or approved equal (White)
 - 3 Band: Paint to match PMS425C (Grey)
 - 4 Arrow: 3M Diamond Grade Film #3990 or approved equal (White)
 - 5 Arrow Circle: Paint Black Matthew's Paint #78A-1A or approved equal (Jet Black)
 - 6 Header Panel: Paint Matthew's Paint #41-342 Brushed Aluminum
 - 7 Reveal: Paint to match PMS425C (Grey)

GRAPHICS: Logo Artwork to be provided by each Tenant.

ARROWS: N/A

MOUNTING: Wall Mounted.

ILLUMINATION: N/A

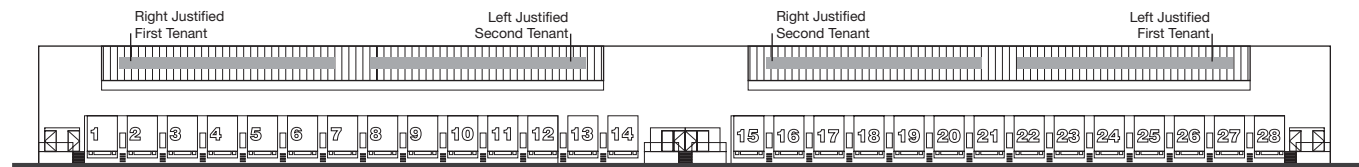
REMARKS: Refer to Section 2.5 for vinyl specifications.

Identification - Secondary

3.6.2

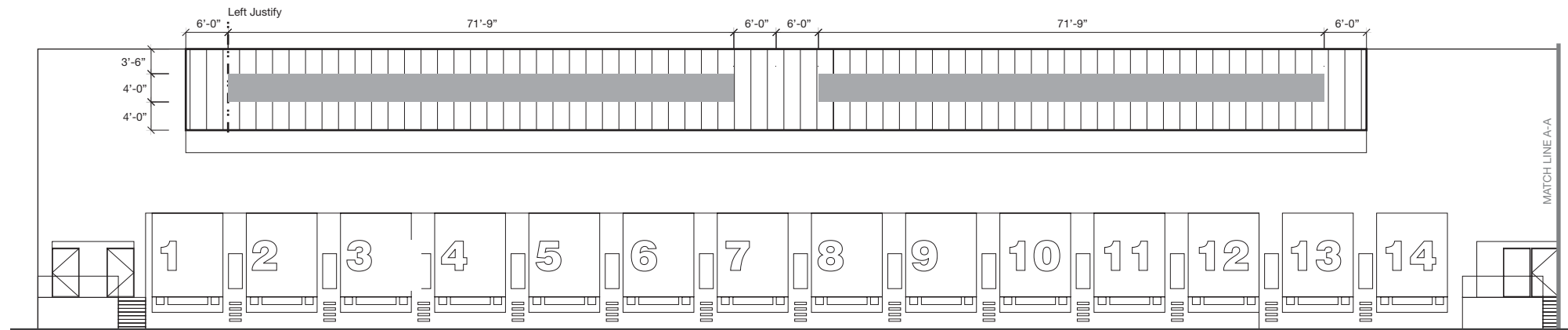


#	Revision	Date



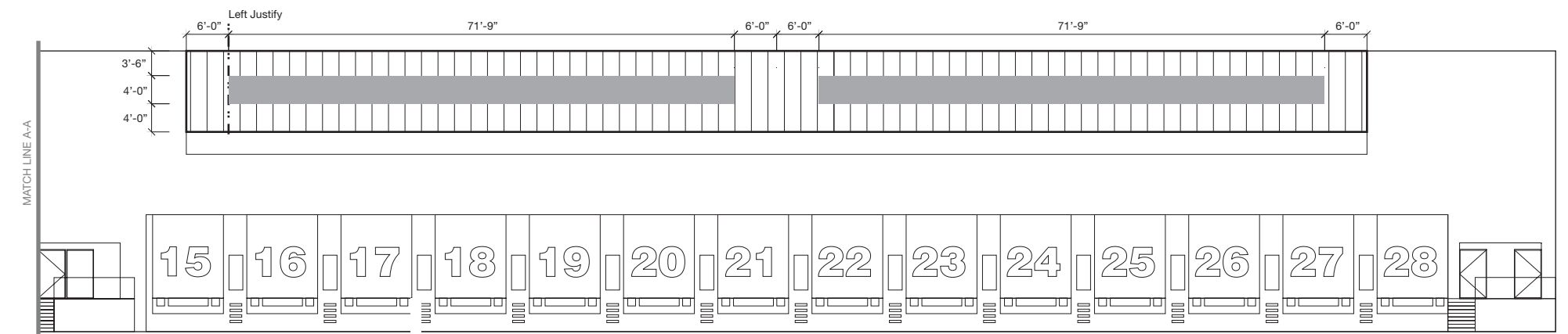
OVERALL ELEVATION - BUILDING 62: Multiple Tenant per section

Scale: N. T. S.



PARTIAL ELEVATION - BUILDING 62

Scale: N. T. S.



PARTIAL ELEVATION - BUILDING 62

Scale: N. T. S.

Wall Mount

ST - 561

DESCRIPTION: Vehicular Tenant Identification for Building 62 - Multiple Tenants per section.

LOCATION: On building facade as shown in this layout.

MATERIALS: N/A

LETTERING:
 A Swiss721 Black BT
 B Swiss721 BT Bold

SYMBOLGY: N/A

- COLORS:**
- 1 Background: Paint Black Matthew's Paint #78A-1A or approved equal (Jet Black)
 - 2 Text: 3M Diamond Grade Film #3990 or approved equal (White)
 - 3 Band: Paint to match PMS425C (Grey)
 - 4 Arrow: 3M Diamond Grade Film #3990 or approved equal (White)
 - 5 Arrow Circle: Paint Black Matthew's Paint #78A-1A or approved equal (Jet Black)
 - 6 Header Panel: Paint Matthew's Paint #41-342 Brushed Aluminum
 - 7 Reveal: Paint to match PMS425C (Grey)

GRAPHICS: Logo Artwork to be provided by each Tenant.

ARROWS: N/A

MOUNTING: Wall Mounted.

ILLUMINATION: N/A

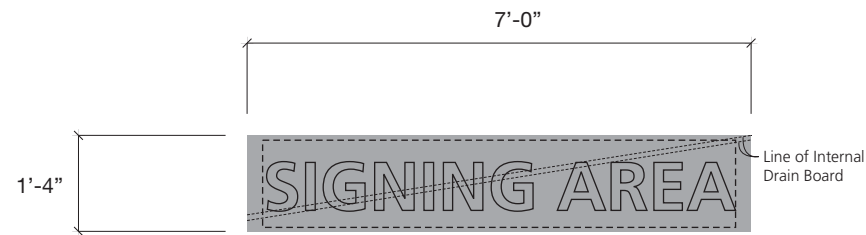
REMARKS: Refer to Section 2.5 for vinyl specifications.

Identification - Secondary

3.6.2

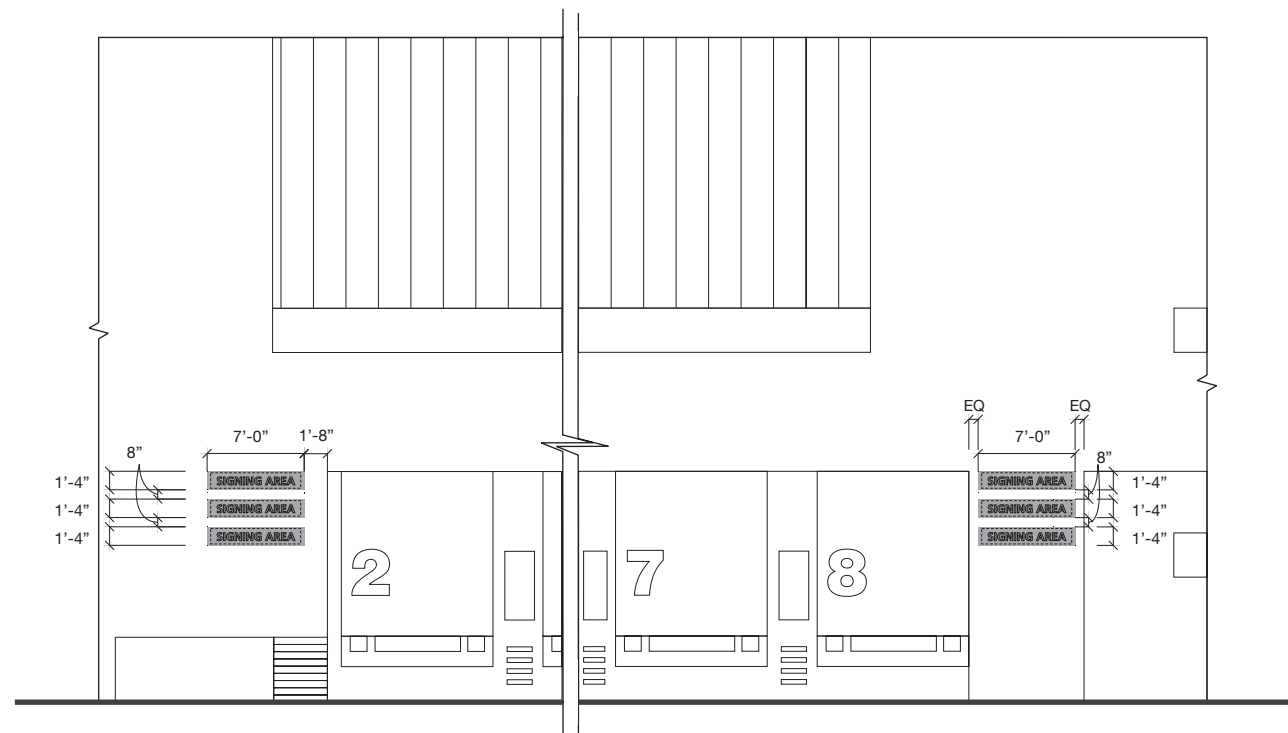


#	Revision	Date



SIGNING AREA LAYOUT

Scale: 3/8"=1'-0"



PARTIAL ELEVATION - BUILDING 56

Scale: N. T. S.

Wall Mount

ST - 562

DESCRIPTION: Pedestrian Tenant Identification for building 56.

LOCATION: On building facade as shown in this layout.

MATERIALS: N/A

LETTERING:
 A Swiss721 Black BT
 B Swiss721 BT Bold

SYMBOLGY: N/A

- COLORS:**
- 1 Background: Paint Black Matthew's Paint #78A-1A or approved equal (Jet Black)
 - 2 Text: 3M Diamond Grade Film #3990 or approved equal (White)
 - 3 Band: Paint to match PMS425C (Grey)
 - 4 Arrow: 3M Diamond Grade Film #3990 or approved equal (White)
 - 5 Arrow Circle: Paint Black Matthew's Paint #78A-1A or approved equal (Jet Black)
 - 6 Header Panel: Paint Matthew's Paint #41-342 Brushed Aluminum
 - 7 Reveal: Paint to match PMS425C (Grey)

GRAPHICS: Logo Artwork to be provided by each Tenant.

ARROWS: N/A

MOUNTING: Wall Mounted.

ILLUMINATION: N/A

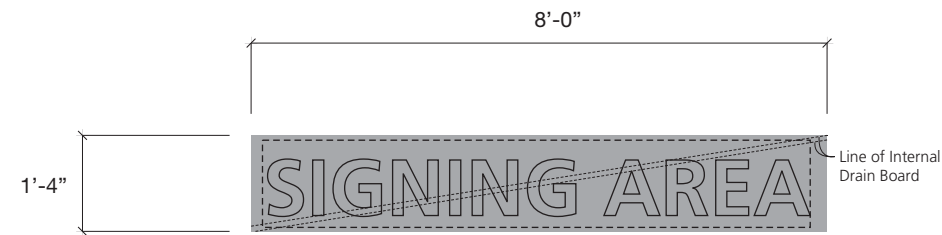
REMARKS: Refer to Section 2.5 for vinyl specifications.

Identification - Secondary

3.6.2

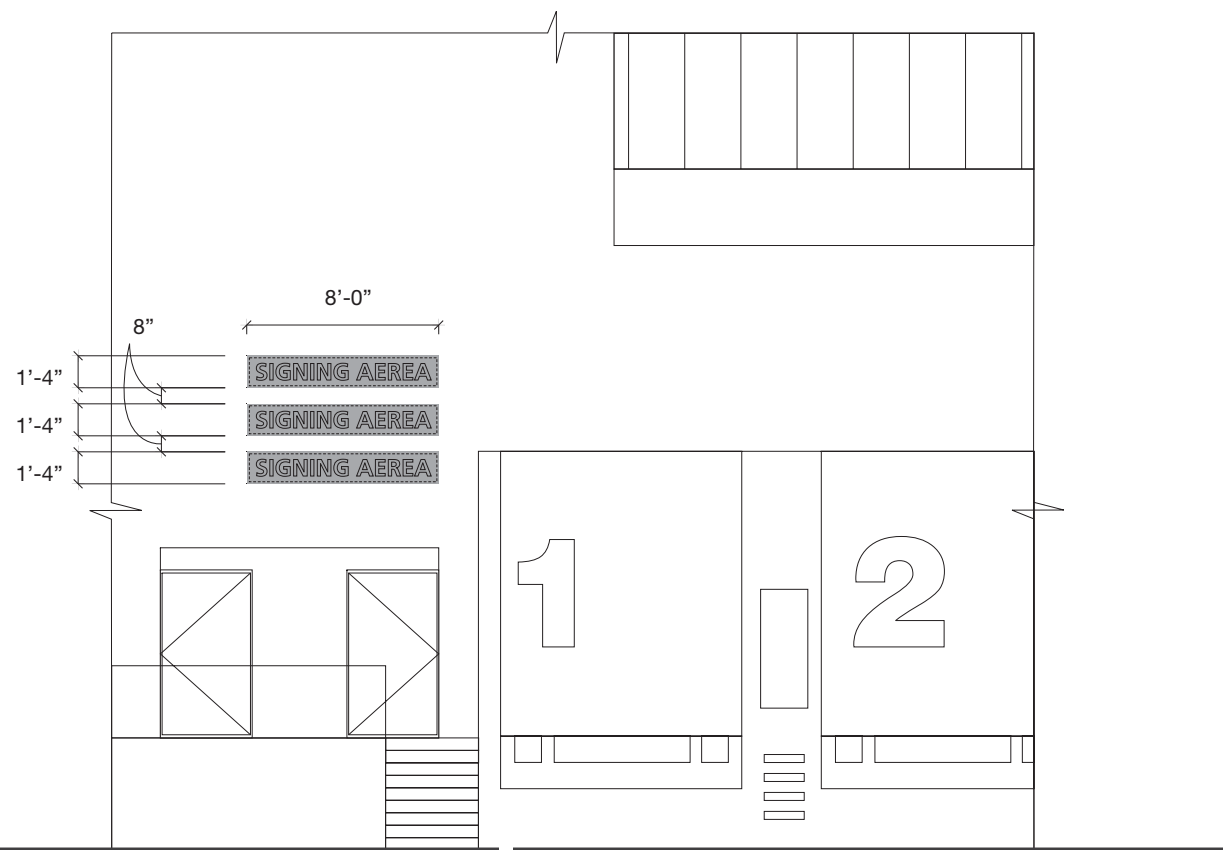


#	Revision	Date



SIGNING AREA LAYOUT

Scale: 3/8"=1'-0"



PARTIAL ELEVATION - BUILDING 57, 58, 61, and 62

Scale: N. T. S.

Wall Mount

ST - 563

DESCRIPTION: Pedestrian Tenant Identification for building 57, 58, 61, and 62.

LOCATION: On building facade as shown in this layout right / left justified.

MATERIALS: N/A

LETTERING:

- Ⓐ Swiss721 Black BT
- Ⓑ Swiss721 BT Bold

SYMBOLGY: N/A

COLORS:

- ① Background: Paint Black Matthew's Paint #78A-1A or approved equal (Jet Black)
- ② Text: 3M Diamond Grade Film #3990 or approved equal (White)
- ③ Band: Paint to match PMS425C (Grey)
- ④ Arrow: 3M Diamond Grade Film #3990 or approved equal (White)
- ⑤ Arrow Circle: Paint Black Matthew's Paint #78A-1A or approved equal (Jet Black)
- ⑥ Header Panel: Paint Matthew's Paint #41-342 Brushed Aluminum
- ⑦ Reveal: Paint to match PMS425C (Grey)

GRAPHICS: Logo Artwork to be provided by each Tenant.

ARROWS: N/A

MOUNTING: Wall Mounted.

ILLUMINATION: N/A

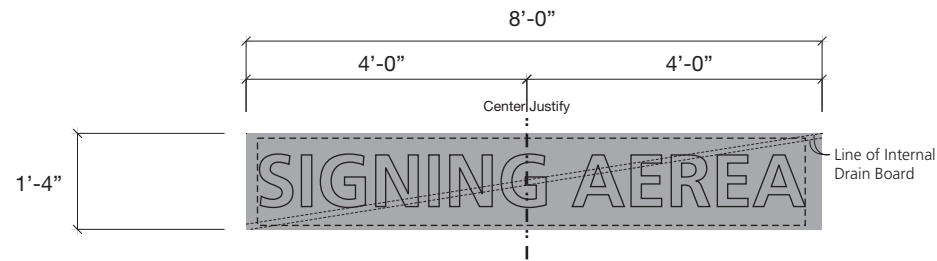
REMARKS: Refer to Section 2.5 for vinyl specifications.

Identification - Secondary

3.6.2

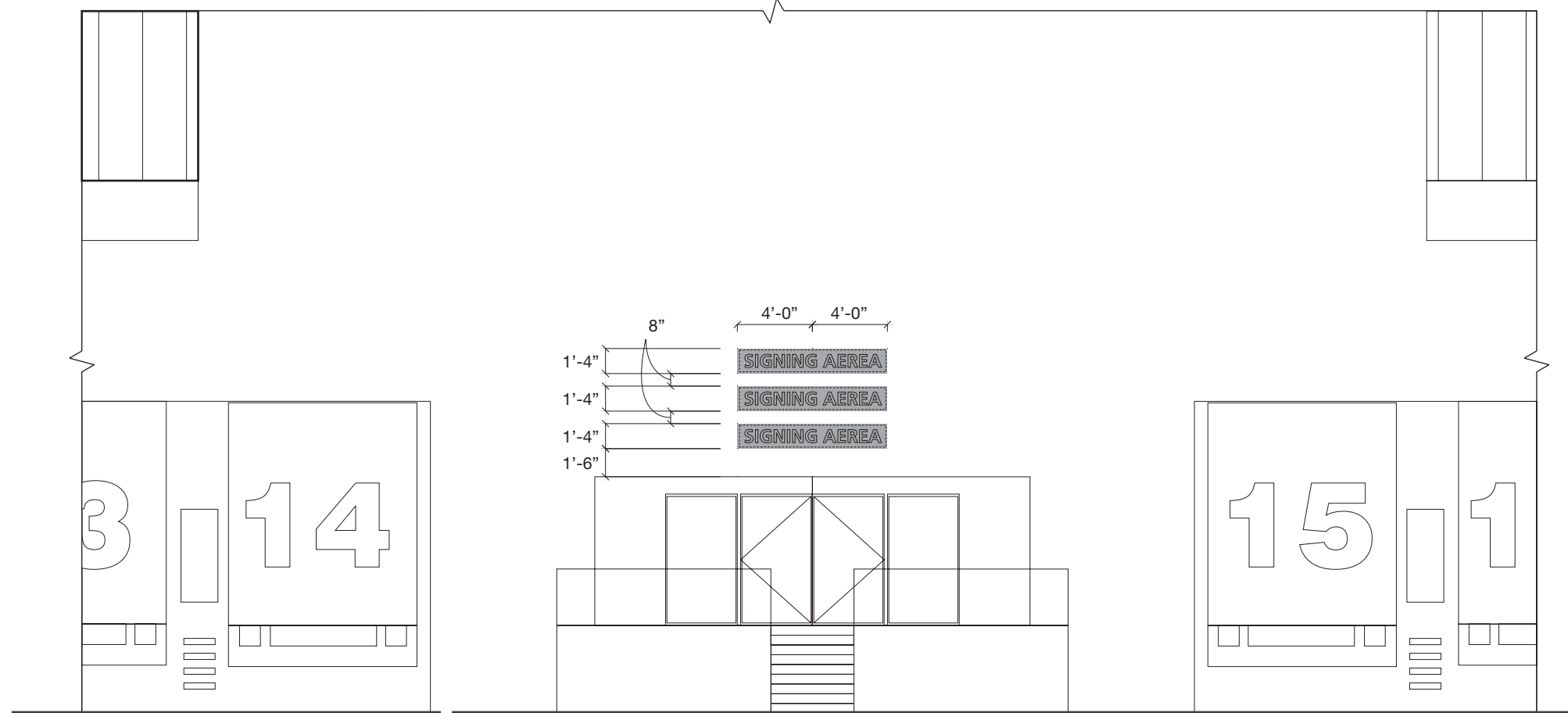


#	Revision	Date



SIGNING AREA LAYOUT

Scale: 3/8"=1'-0"



PARTIAL ELEVATION - BUILDING 57, 58, 61, and 62

Scale: N. T. S.

Wall Mount

ST - 563

DESCRIPTION: Pedestrian Tenant Identification for building 57, 58, 61, and 62.

LOCATION: On building facade as shown in this layout right / left justified.

MATERIALS: N/A

LETTERING:
 A Swiss721 Black BT
 B Swiss721 BT Bold

SYMBOLGY: N/A

- COLORS:**
- 1 Background: Paint Black Matthew's Paint #78A-1A or approved equal (Jet Black)
 - 2 Text: 3M Diamond Grade Film #3990 or approved equal (White)
 - 3 Band: Paint to match PMS425C (Grey)
 - 4 Arrow: 3M Diamond Grade Film #3990 or approved equal (White)
 - 5 Arrow Circle: Paint Black Matthew's Paint #78A-1A or approved equal (Jet Black)
 - 6 Header Panel: Paint Matthew's Paint #41-342 Brushed Aluminum
 - 7 Reveal: Paint to match PMS425C (Grey)

GRAPHICS: Logo Artwork to be provided by each Tenant.

ARROWS: N/A

MOUNTING: Wall Mounted.

ILLUMINATION: N/A

REMARKS: Refer to Section 2.5 for vinyl specifications.

Identification - Secondary

3.6.2

