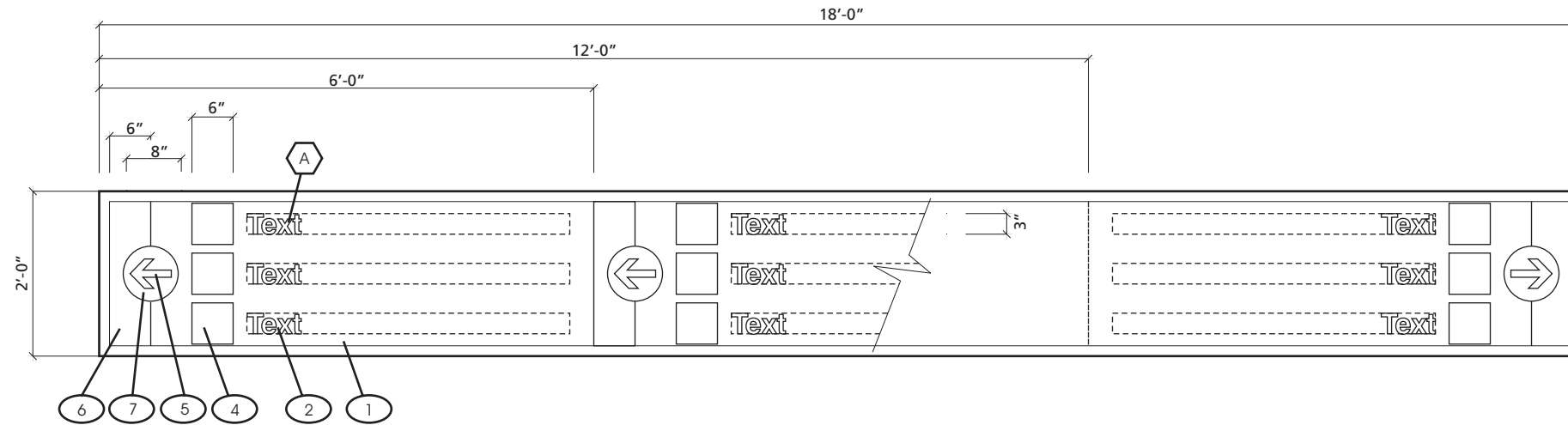
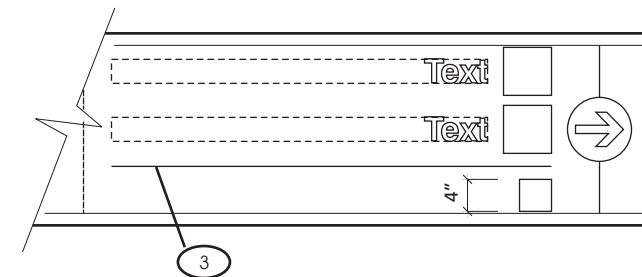


#	Revision	Date



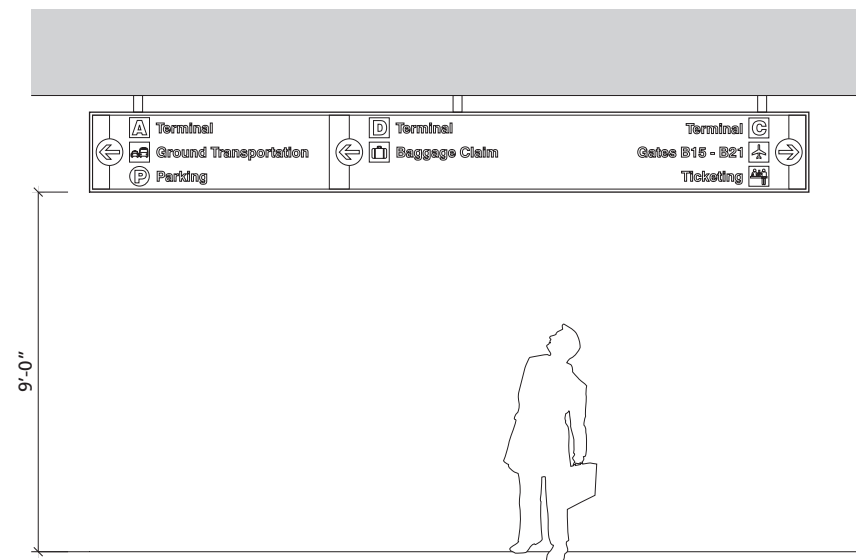
SIGN FACE LAYOUT - OPTION A

Scale: 1/2"=1'-0"



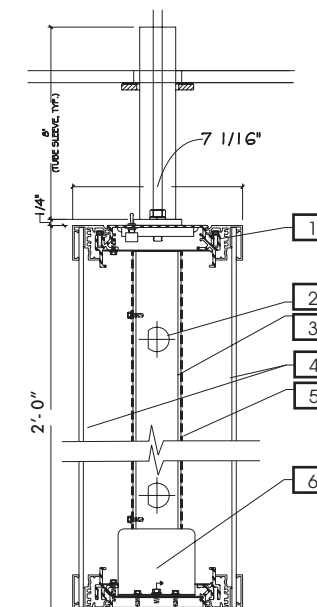
SIGN FACE LAYOUT - OPTION B

Scale: 1/2"=1'-0"



ELEVATION - OPTION A

Scale: N.T.S.



DETAIL (For Design Intent Only)

Scale: N.T.S.

**Overhead - Directional** **ST - 101**

**DESCRIPTION:** Overhead suspended -3 direction/ 3 levels of messaging.

**LOCATION:** Terminals. Primary circulation corridors perpendicular to the main pedestrian traffic flow.

**MATERIALS:** Extruded aluminum sign face structure with removable face panel.

**LETTERING:**  
 A Swiss721 BT Bold  
 B N/A

**SYMBOLGY:** (Refer to Section 2.2.2)

- COLORS:**
- 1 Background: 3M Opaque Film #7725-12 or approved equal (Black)
  - 2 Text: Translucent Acrylic (White)
  - 3 Band: Translucent Acrylic (White)
  - 4 Symbol: Translucent Acrylic (White)
  - 5 Arrow: Translucent Acrylic (White)
  - 6 Terminal I.D. band:  
**Terminal A** 3M#230/230-127 (Intense Blue)  
**Terminal B** 3M#230/230-33 (Red)  
**Terminal C** 3M#230/230-26 (Green)  
**Terminal D** 3M#220-98 (Dark Violet)
  - 7 Arrow circle: 3M Opaque Film (Dark Grey) #7725-41

**GRAPHICS:** N/A

**ARROWS:** 6"x4.25" (Refer to Section 2.4.1)

**MOUNTING:** Overhead suspended.

**ILLUMINATION:** Sign will be internally illuminated.

**REMARKS:** Refer to Section 2.5 for vinyl specifications.

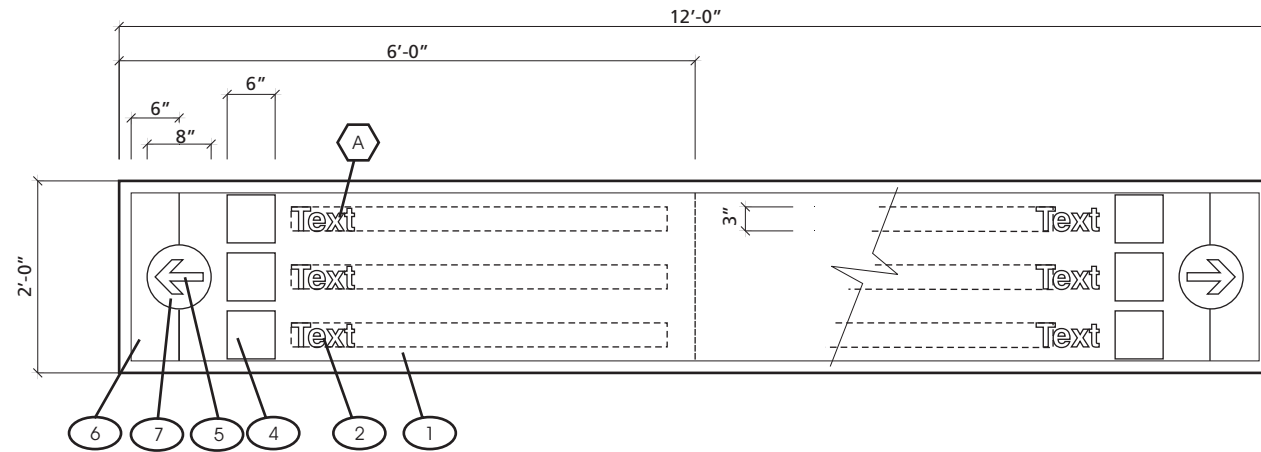
**NOTES:**

- 1 # 10-24 X 1/2"SS SCS hinge screw drill by 5/16" Dia. Use reference scoring 8" from ends typical
- 2 D-Punch for fluor sockets
- 3 2" X 2" X 1/8" alum channel raceway, socket support welded to base plate mtd. To frame w/ #8 X 1/2" SS TEK DP SMS
- 4 3/16" signwhite polycarb faces mounted w/ 3M 4930 VHB FT
- 5 .040" alum formed raceway cover, socket Support
- 6 Panduit ABM25-A-C cable tie pad in raceway with panduit PLIM-C ZIP TIE 1/8" WIDE x 7/8" Ballast France 688 DR

**Directional Signs - Primary** **3.5.1**

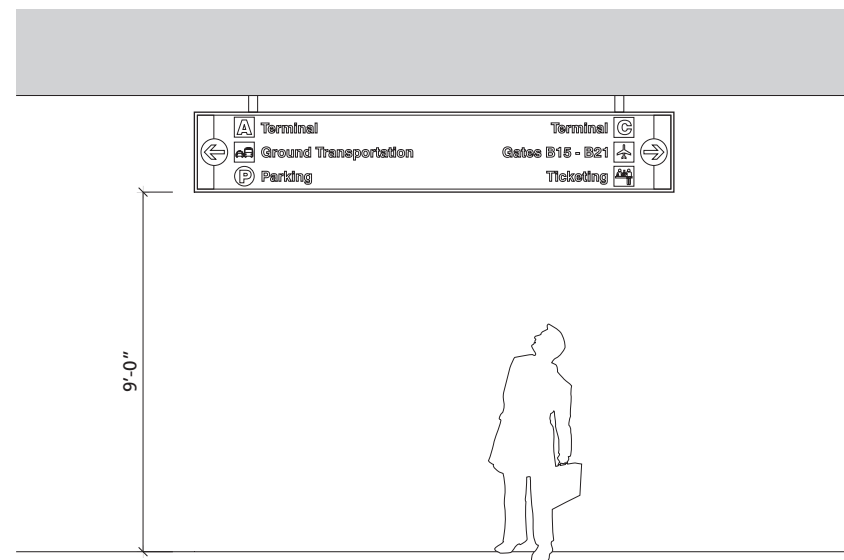


#	Revision	Date



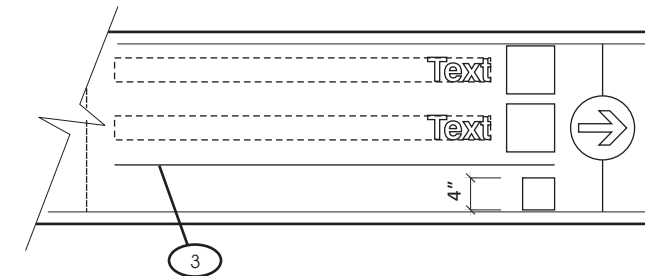
SIGN FACE LAYOUT - OPTION A

Scale: 1/2"=1'-0"



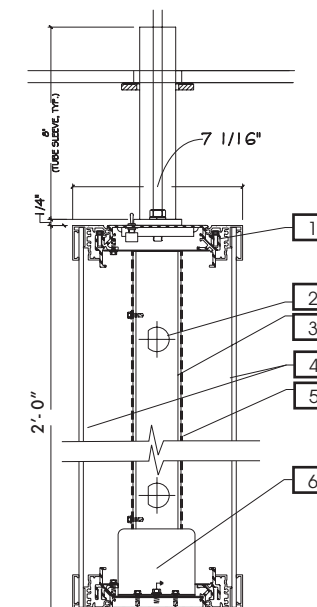
ELEVATION - OPTION A

Scale: N.T.S.



SIGN FACE LAYOUT - OPTION B

Scale: 1/2"=1'-0"



DETAIL (For Design Intent Only)

Scale: N.T.S.

Overhead - Directional **ST - 102**

**DESCRIPTION:** Overhead suspended -2 direction/3 levels of messaging.

**LOCATION:** Terminals. Primary circulation corridors perpendicular to the main pedestrian traffic flow.

**MATERIALS:** Extruded aluminum sign face structure with removable face panel.

**LETTERING:**  
 A Swiss721 BT Bold  
 B N/A

**SYMBOLGY:** (Refer to Section 2.2.2)

- COLORS:**
- 1 Background: 3M Opaque Film #7725-12 or approved equal (Black)
  - 2 Text: Translucent Acrylic (White)
  - 3 Band: Translucent Acrylic (White)
  - 4 Symbol: Translucent Acrylic (White)
  - 5 Arrow: Translucent Acrylic (White)
  - 6 Terminal I.D. band:  
**Terminal A** 3M#230/230-127 (Intense Blue)  
**Terminal B** 3M#230/230-33 (Red)  
**Terminal C** 3M#230/230-26 (Green)  
**Terminal D** 3M#220-98 (Dark Violet)
  - 7 Arrow circle: 3M Opaque Film (Dark Grey) #7725-41

**GRAPHICS:** N/A

**ARROWS:** 6"x4.25" (Refer to Section 2.4.1)

**MOUNTING:** Overhead suspended.

**ILLUMINATION:** Sign will be internally illuminated.

**REMARKS:** Refer to Section 2.5 for vinyl specifications.

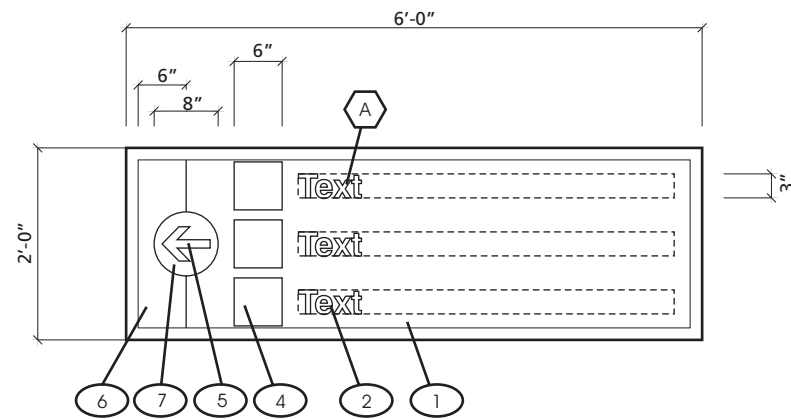
**NOTES:**

- 1 # 10-24 X 1/2"SS SCS hinge screw drill by 5/16" Dia. Use reference scoring 8" from ends typical
  - 2 D-Punch for fluor sockets
  - 3 2" X 2" X 1/8" alum channel raceway, socket support welded to base plate mtd. To frame w/ #8 X 1/2" SS TEK DP SMS
  - 4 3/16" signwhite polycarb faces mounted w/ 3M 4930 VHB FT
  - 5 .040" alum formed raceway cover, socket Support
- Panduit ABM25-A-C cable tie pad in raceway with panduit PLIM-C ZIP TIE 1/8" WIDE x 7/8"
- 6 Ballast France 688 DR

Directional Signs - Primary **3.5.1**

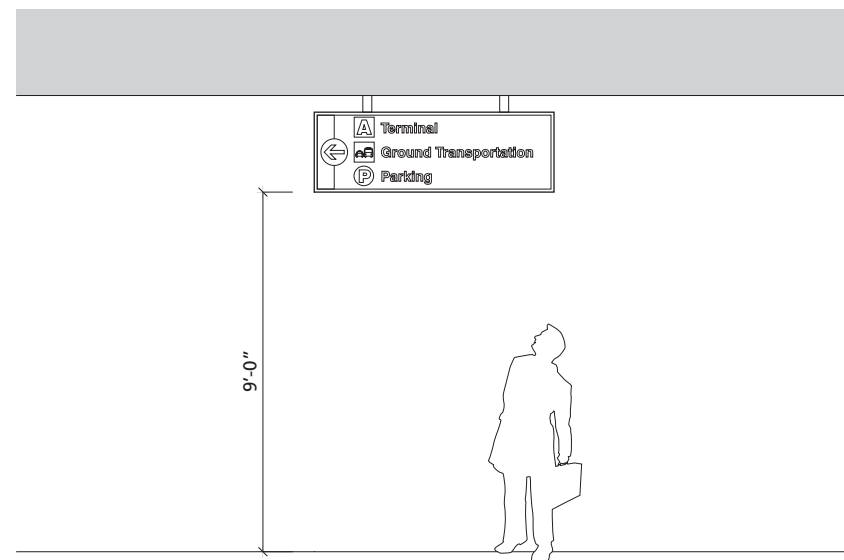


#	Revision	Date



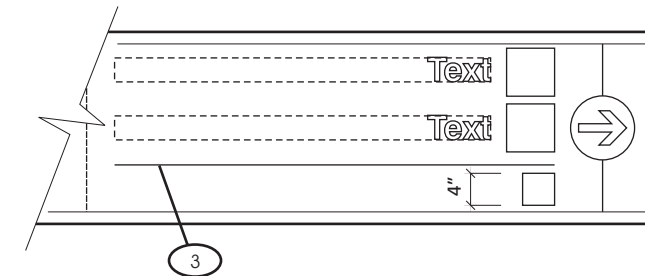
SIGN FACE LAYOUT - OPTION A

Scale: 1/2"=1'-0"



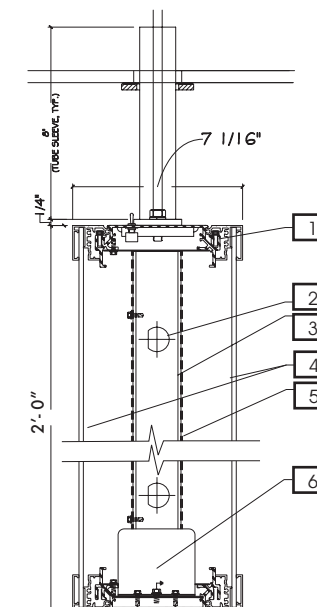
ELEVATION - OPTION A

Scale: N.T.S.



SIGN FACE LAYOUT - OPTION B

Scale: 1/2"=1'-0"



DETAIL (For Design Intent Only)

Scale: N.T.S.

Overhead - Directional **ST - 103**

**DESCRIPTION:** Overhead suspended -1 direction/ 3 levels of messaging.

**LOCATION:** Terminals. Primary circulation corridors perpendicular to the main pedestrian traffic flow.

**MATERIALS:** Extruded aluminum sign face structure with removable face panel.

**LETTERING:**  
 A Swiss721 BT Bold  
 B N/A

**SYMBOLGY:** (Refer to Section 2.2.2)

- COLORS:**
- 1 Background: 3M Opaque Film #7725-12 or approved equal (Black)
  - 2 Text: Translucent Acrylic (White)
  - 3 Band: Translucent Acrylic (White)
  - 4 Symbol: Translucent Acrylic (White)
  - 5 Arrow: Translucent Acrylic (White)
  - 6 Terminal I.D. band:  
**Terminal A** 3M#230/230-127 (Intense Blue)  
**Terminal B** 3M#230/230-33 (Red)  
**Terminal C** 3M#230/230-26 (Green)  
**Terminal D** 3M#220-98 (Dark Violet)
  - 7 Arrow circle: 3M Opaque Film (Dark Grey) #7725-41

**GRAPHICS:** N/A

**ARROWS:** 6"x4.25" (Refer to Section 2.4.1)

**MOUNTING:** Overhead suspended.

**ILLUMINATION:** Sign will be internally illuminated.

**REMARKS:** Refer to Section 2.5 for vinyl specifications.

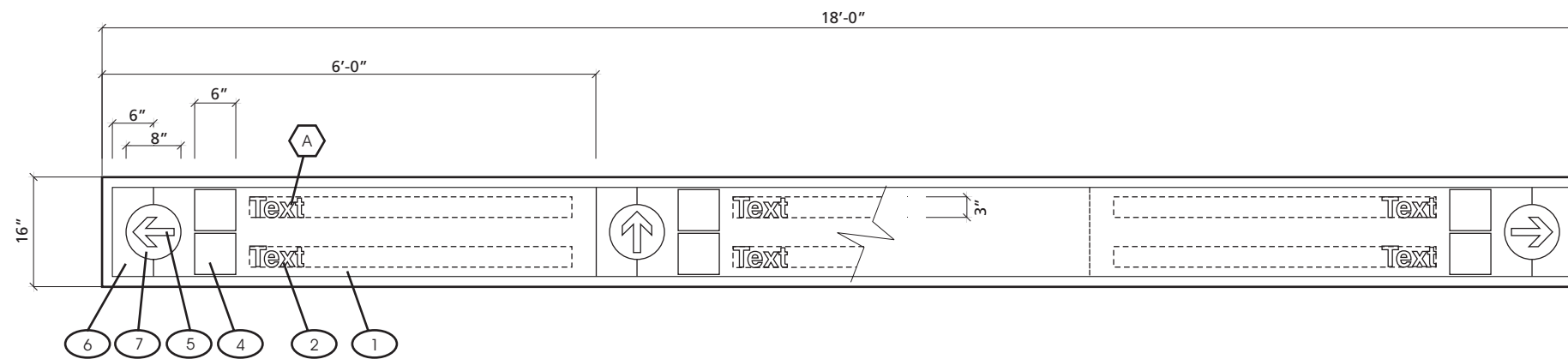
**NOTES:**

- 1 # 10-24 X 1/2"SS SCS hinge screw drill by 5/16" Dia. Use reference scoring 8" from ends typical
  - 2 D-Punch for fluor sockets
  - 3 2" X 2" X 1/8" alum channel raceway, socket support welded to base plate mtd. To frame w/ #8 X 1/2" SS TEK DP SMS
  - 4 3/16" signwhite polycarb faces mounted w/ 3M 4930 VHB FT
  - 5 .040" alum formed raceway cover, socket Support
- Panduit ABM25-A-C cable tie pad in raceway with panduit PLIM-C ZIP TIE 1/8" WIDE x 7/8"
- 6 Ballast France 688 DR

Directional Signs - Primary **3.5.1**

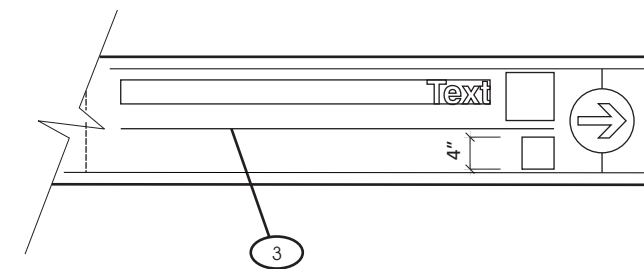


#	Revision	Date



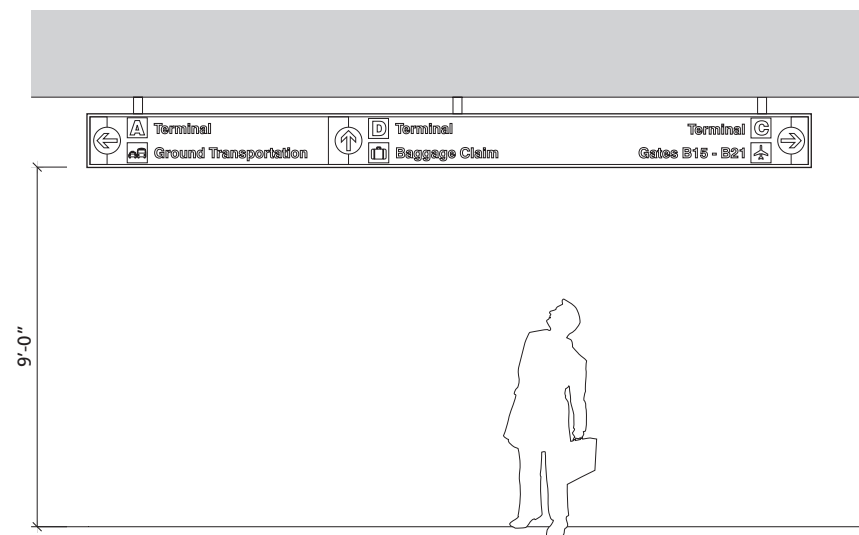
SIGN FACE LAYOUT - OPTION A

Scale: 1/2"=1'-0"



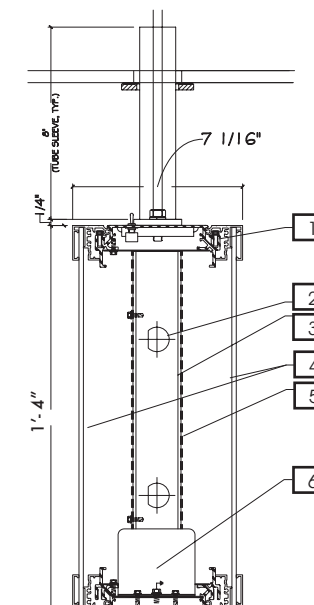
SIGN FACE LAYOUT - OPTION B

Scale: 1/2"=1'-0"



ELEVATION - OPTION A

Scale: N.T.S.



DETAIL (For Design Intent Only)

Scale: N.T.S.

**Overhead - Directional** **ST - 104**

**DESCRIPTION:** Overhead suspended -3 direction/ 2 levels of messaging.

**LOCATION:** Terminals. Primary circulation corridors perpendicular to the main pedestrian traffic flow.

**MATERIALS:** Extruded aluminum sign face structure with removable face panel.

**LETTERING:**  
 A Swiss721 BT Bold  
 B N/A

**SYMBOLGY:** (Refer to Section 2.2.2)

- COLORS:**
- 1 Background: 3M Opaque Film #7725-12 or approved equal (Black)
  - 2 Text: Translucent Acrylic (White)
  - 3 Band: Translucent Acrylic (White)
  - 4 Symbol: Translucent Acrylic (White)
  - 5 Arrow: Translucent Acrylic (White)
  - 6 Terminal I.D. band:
    - Terminal A** 3M#230/230-127 (Intense Blue)
    - Terminal B** 3M#230/230-33 (Red)
    - Terminal C** 3M#230/230-26 (Green)
    - Terminal D** 3M#220-98 (Dark Violet)
  - 7 Arrow circle: 3M Opaque Film (Dark Grey) #7725-41

**GRAPHICS:** N/A

**ARROWS:** 6"x4.25" (Refer to Section 2.4.1)

**MOUNTING:** Overhead suspended.

**ILLUMINATION:** Sign will be internally illuminated.

**REMARKS:** Refer to Section 2.5 for vinyl specifications.

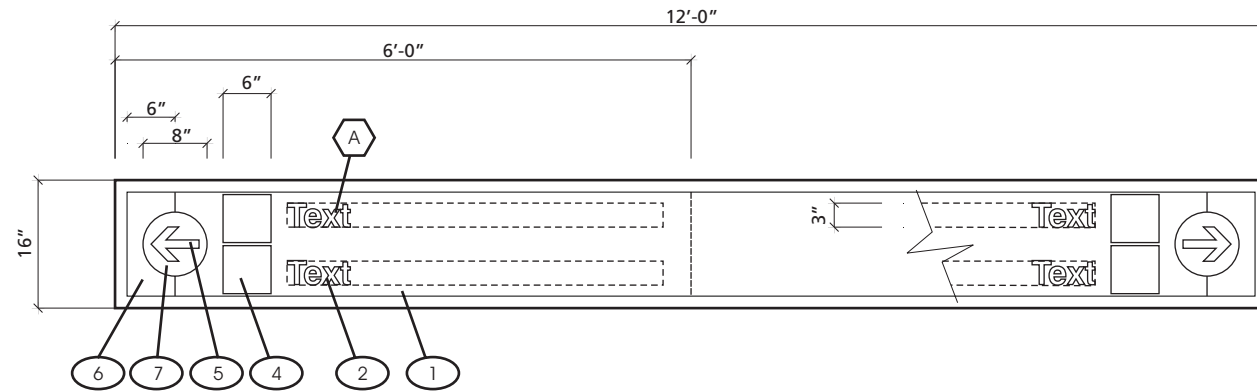
**NOTES:**

- 1 # 10-24 X 1/2"SS SCS hinge screw drill by 5/16" Dia. Use reference scoring 8" from ends typical
  - 2 D-Punch for fluor sockets
  - 3 2" X 2" X 1/8" alum channel raceway, socket support welded to base plate mtd. To frame w/ #8 X 1/2" SS TEK DP SMS
  - 4 3/16" signwhite polycarb faces MTD w/ 3M 4930 VHB FT
  - 5 .040" alum formed raceway cover, socket Support
- Panduit ABM25-A-C cable tie pad in raceway with panduit PLIM-C ZIP TIE 1/8" WIDE x 7/8"
- 6 Ballast France 688 DR

**Directional Signs - Primary** **3.5.1**

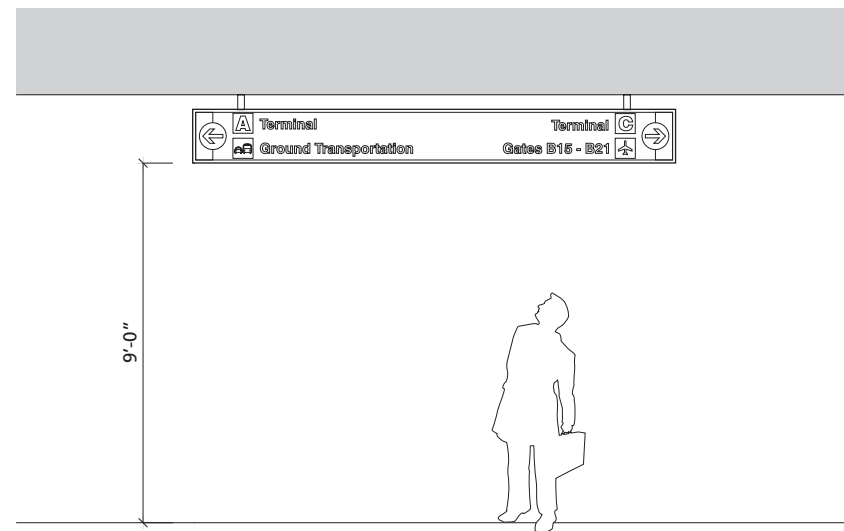


#	Revision	Date



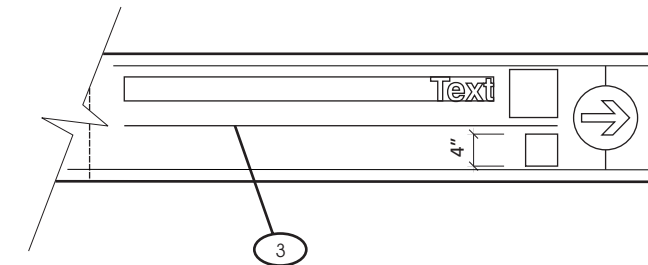
SIGN FACE LAYOUT - OPTION A

Scale: 1/2"=1'-0"



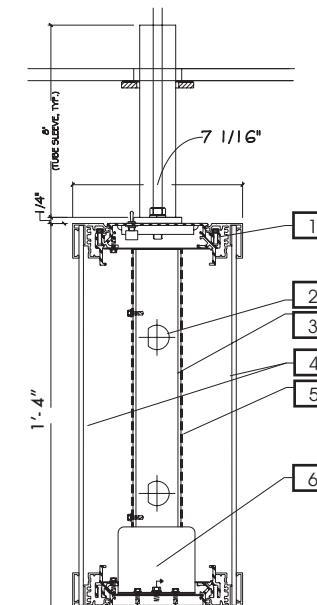
ELEVATION - OPTION A

Scale: N.T.S.



SIGN FACE LAYOUT - OPTION B

Scale: 1/2"=1'-0"



DETAIL (For Design Intent Only)

Scale: N.T.S.

**Overhead - Directional** **ST - 105**

**DESCRIPTION:** Overhead suspended -2 direction/2 levels of messaging.

**LOCATION:** Terminals. Primary circulation corridors perpendicular to the main pedestrian traffic flow.

**MATERIALS:** Extruded aluminum sign face structure with removable face panel.

**LETTERING:**  
 A Swiss721 BT Bold  
 B N/A

**SYMBOLGY:** (Refer to Section 2.2.2)

- COLORS:**
- 1 Background: 3M Opaque Film #7725-12 or approved equal (Black)
  - 2 Text: Translucent Acrylic (White)
  - 3 Band: Translucent Acrylic (White)
  - 4 Symbol: Translucent Acrylic (White)
  - 5 Arrow: Translucent Acrylic (White)
  - 6 Terminal I.D. band:  
**Terminal A** 3M#230/230-127 (Intense Blue)  
**Terminal B** 3M#230/230-33 (Red)  
**Terminal C** 3M#230/230-26 (Green)  
**Terminal D** 3M#220-98 (Dark Violet)
  - 7 Arrow circle: 3M Opaque Film (Dark Grey) #7725-41

**GRAPHICS:** N/A

**ARROWS:** 6"x4.25" (Refer to Section 2.4.1)

**MOUNTING:** Overhead suspended.

**ILLUMINATION:** Sign will be internally illuminated.

**REMARKS:** Refer to Section 2.5 for vinyl specifications.

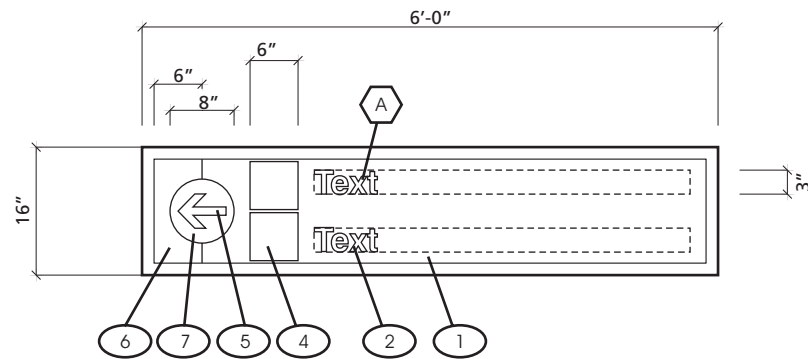
**NOTES:**

- 1 # 10-24 X 1/2"SS SCS hinge screw drill by 5/16" Dia. Use reference scoring 8" from ends typical
- 2 D-Punch for fluor sockets
- 3 2" X 2" X 1/8" alum channel raceway, socket support welded to base plate mtd. To frame w/ #8 X 1/2" SS TEK DP SMS
- 4 3/16" signwhite polycarb faces MTD w/ 3M 4930 VHB FT
- 5 .040" alum formed raceway cover, socket Support
- 6 Panduit ABM25-A-C cable tie pad in raceway with panduit PLIM-C ZIP TIE 1/8" WIDE x 7/8" Ballast France 688 DR

**Directional Signs - Primary** **3.5.1**

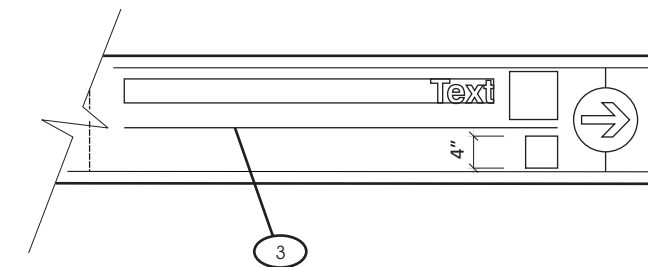


#	Revision	Date



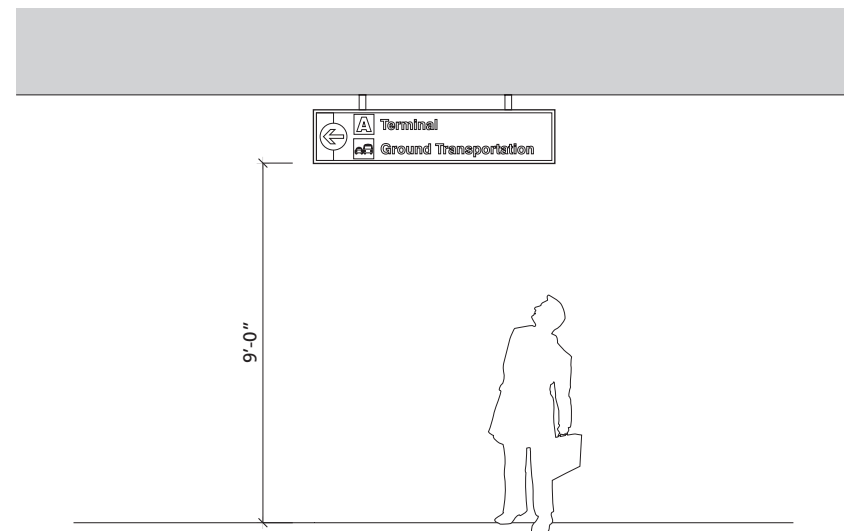
SIGN FACE LAYOUT - OPTION A

Scale: 1/2"=1'-0"



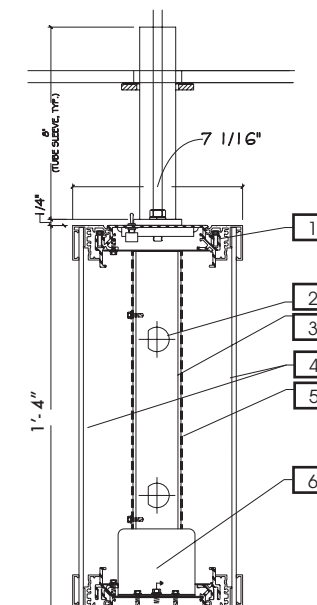
SIGN FACE LAYOUT - OPTION B

Scale: 1/2"=1'-0"



ELEVATION - OPTION A

Scale: N.T.S.



DETAIL (For Design Intent Only)

Scale: N.T.S.

**Overhead - Directional** **ST - 106**

**DESCRIPTION:** Overhead suspended -1 direction/ 2 levels of messaging.

**LOCATION:** Terminals. Primary circulation corridors perpendicular to the main pedestrian traffic flow.

**MATERIALS:** Extruded aluminum sign face structure with removable face panel.

**LETTERING:**  
 A Swiss721 BT Bold  
 B N/A

**SYMBOLGY:** (Refer to Section 2.2.2)

- COLORS:**
- 1 Background: 3M Opaque Film #7725-12 or approved equal (Black)
  - 2 Text: Translucent Acrylic (White)
  - 3 Band: Translucent Acrylic (White)
  - 4 Symbol: Translucent Acrylic (White)
  - 5 Arrow: Translucent Acrylic (White)
  - 6 Terminal I.D band:  
**Terminal A** 3M#230/230-127 (Intense Blue)  
**Terminal B** 3M#230/230-33 (Red)  
**Terminal C** 3M#230/230-26 (Green)  
**Terminal D** 3M#220-98 (Dark Violet)
  - 7 Arrow circle: 3M Opaque Film (Dark Grey) #7725-41

**GRAPHICS:** N/A

**ARROWS:** 6"x4.25" (Refer to Section 2.4.1)

**MOUNTING:** Overhead suspended.

**ILLUMINATION:** Sign will be internally illuminated.

**REMARKS:** Refer to Section 2.5 for vinyl specifications.

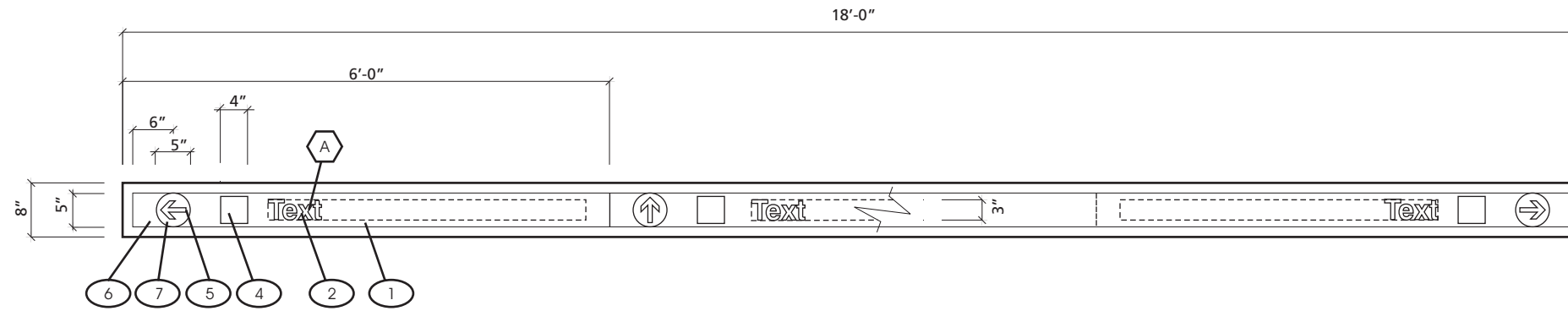
**NOTES:**

- 1 # 10-24 X 1/2"SS SCS hinge screw drill by 5/16" Dia. Use reference scoring 8" from ends typical
  - 2 D-Punch for fluor sockets
  - 3 2" X 2" X 1/8" alum channel raceway, socket support welded to base plate mtd. To frame w/ #8 X 1/2" SS TEK DP SMS
  - 4 3/16" signwhite polycarb faces mounted w/ 3M 4930 VHB FT
  - 5 .040" alum formed raceway cover, socket Support
- Panduit ABM25-A-C cable tie pad in raceway with panduit PLIM-C ZIP TIE 1/8" WIDE x 7/8"
- 6 Ballast France 688 DR

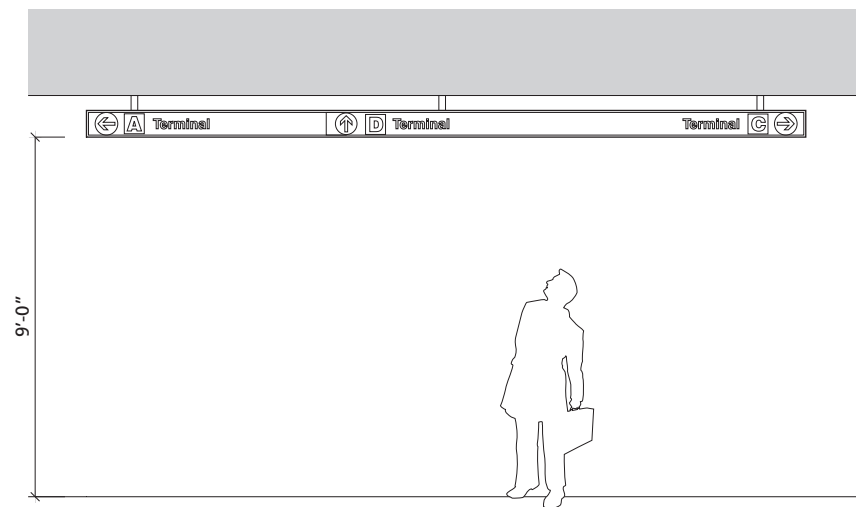
**Directional Signs - Primary** **3.5.1**



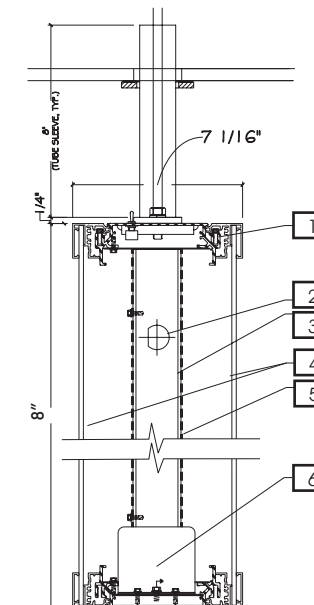
#	Revision	Date



SIGN FACE LAYOUT  
Scale: 1/2"=1'-0"



ELEVATION  
Scale: N.T.S.



DETAIL (For Design Intent Only)  
Scale: N.T.S.

**Overhead - Directional ST - 107**

**DESCRIPTION:** Overhead suspended -3 direction/ 1 levels of messaging.

**LOCATION:** Terminals. Primary circulation corridors perpendicular to the main pedestrian traffic flow.

**MATERIALS:** Extruded aluminum sign face structure with removable face panel.

**LETTERING:**  
 A Swiss721 BT Bold  
 B N/A

**SYMBOLGY:** (Refer to Section 2.2.2)

- COLORS:**
- 1 Background: 3M Opaque Film #7725-12 or approved equal (Black)
  - 2 Text: Translucent Acrylic (White)
  - 3 Band: Translucent Acrylic (White)
  - 4 Symbol: Translucent Acrylic (White)
  - 5 Arrow: Translucent Acrylic (White)
  - 6 Terminal I.D band:
    - Terminal A 3M#230/230-127 (Intense Blue)
    - Terminal B 3M#230/230-33 (Red)
    - Terminal C 3M#230/230-26 (Green)
    - Terminal D 3M#220-98 (Dark Violet)
  - 7 Arrow circle: 3M Opaque Film (Dark Grey) #7725-41

**GRAPHICS:** N/A

**ARROWS:** 6"x4.25" (Refer to Section 2.4.1)

**MOUNTING:** Overhead suspended.

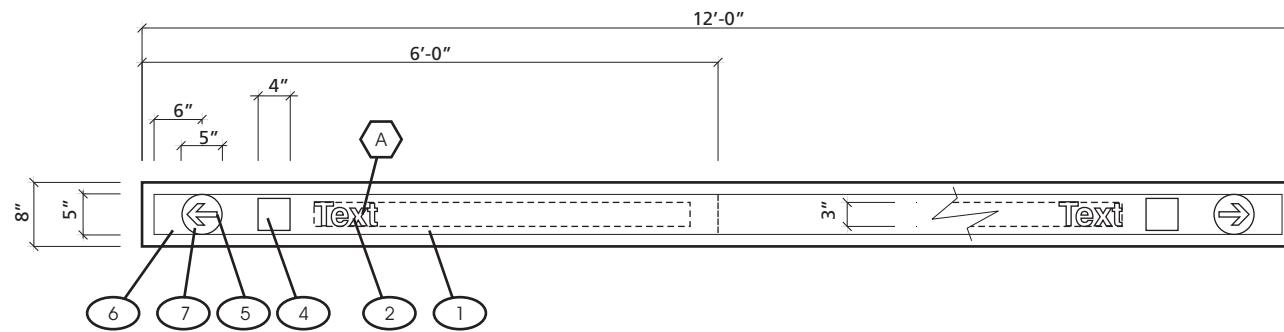
**ILLUMINATION:** Sign will be internally illuminated.

**REMARKS:** Refer to Section 2.5 for vinyl specifications.

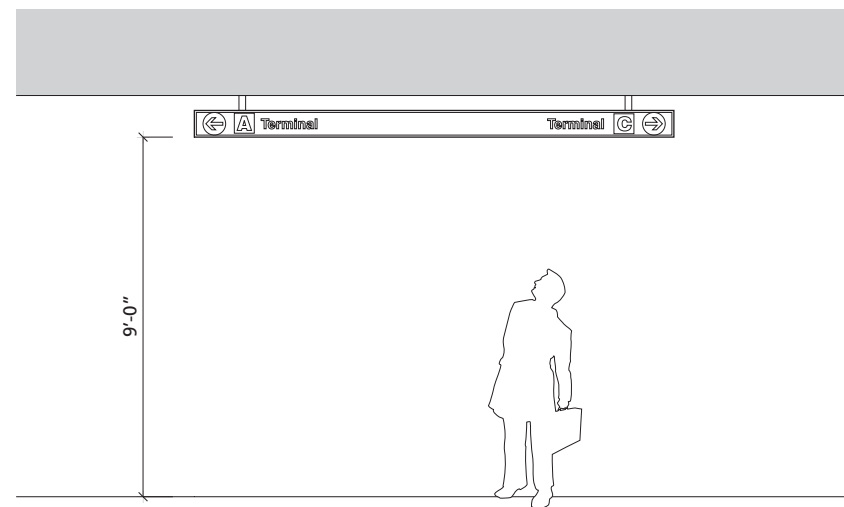
- NOTES:**
- 1 # 10-24 X 1/2"SS SCS hinge screw drill by 5/16" Dia. Use reference scoring 8" from ends typical
  - 2 D-Punch for fluor sockets
  - 3 2" X 2" X 1/8" alum channel raceway, socket support welded to base plate mtd. To frame w/ #8 X 1/2" SS TEK DP SMS
  - 4 3/16" signwhite polycarb faces mounted w/ 3M 4930 VHB FT
  - 5 .040" alum formed raceway cover, socket Support
- Panduit ABM25-A-C cable tie pad in raceway with panduit PLIM-C ZIP TIE 1/8" WIDE x 7/8" Ballast France 688 DR

**Directional Signs - Primary 3.5.1**

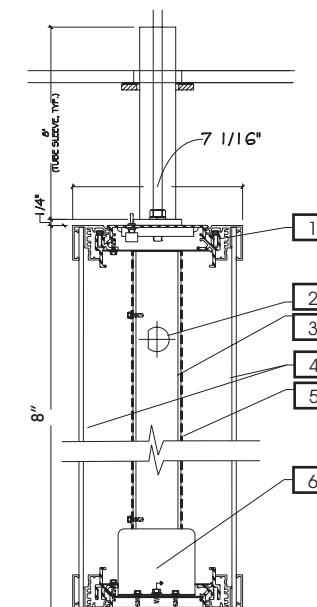
#	Revision	Date



SIGN FACE LAYOUT  
Scale: 1/2"=1'-0"



ELEVATION  
Scale: N.T.S.



DETAIL (For Design Intent Only)  
Scale: N.T.S.

**Overhead - Directional** **ST - 108**

**DESCRIPTION:** Overhead suspended -2 direction/ 1 level of messaging.

**LOCATION:** Terminals. Primary circulation corridors perpendicular to the main pedestrian traffic flow.

**MATERIALS:** Extruded aluminum sign face structure with removable face panel.

**LETTERING:**  
 A Swiss721 BT Bold  
 B N/A

**SYMBOLGY:** (Refer to Section 2.2.2)

- COLORS:**
- 1 Background: 3M Opaque Film #7725-12 or approved equal (Black)
  - 2 Text: Translucent Acrylic (White)
  - 3 Band: Translucent Acrylic (White)
  - 4 Symbol: Translucent Acrylic (White)
  - 5 Arrow: Translucent Acrylic (White)
  - 6 Terminal I.D band:  
**Terminal A** 3M#230/230-127 (Intense Blue)  
**Terminal B** 3M#230/230-33 (Red)  
**Terminal C** 3M#230/230-26 (Green)  
**Terminal D** 3M#220-98 (Dark Violet)
  - 7 Arrow circle: 3M Opaque Film (Dark Grey) #7725-41

**GRAPHICS:** N/A

**ARROWS:** 6"x4.25" (Refer to Section 2.4.1)

**MOUNTING:** Overhead suspended.

**ILLUMINATION:** Sign will be internally illuminated.

**REMARKS:** Refer to Section 2.5 for vinyl specifications.

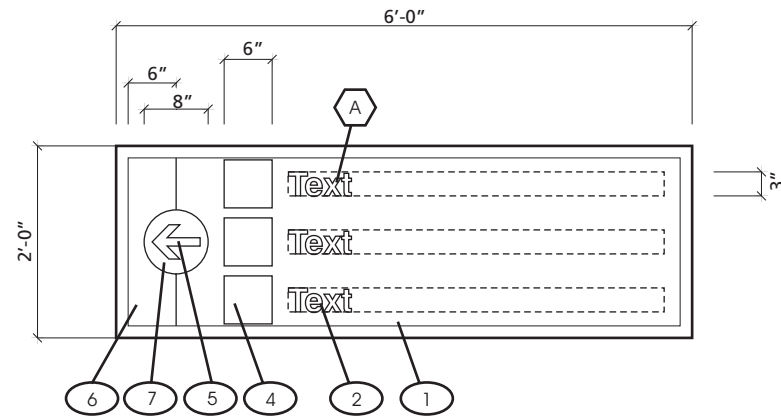
- NOTES:**
- 1 # 10-24 X 1/2"SS SCS hinge screw drill by 5/16" Dia. Use reference scoring 8" from ends typical
  - 2 D-Punch for fluor sockets
  - 3 2" X 2" X 1/8" alum channel raceway, socket support welded to base plate mtd. To frame w/ #8 X 1/2" SS TEK DP SMS
  - 4 3/16" signwhite polycarb faces mounted w/ 3M 4930 VHB FT
  - 5 .040" alum formed raceway cover, socket Support
- Panduit ABM25-A-C cable tie pad in raceway with panduit PLIM-C ZIP TIE 1/8" WIDE x 7/8" Ballast France 688 DR

**Directional Signs - Primary** **3.5.1**



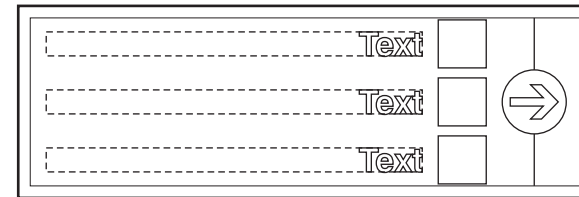


#	Revision	Date



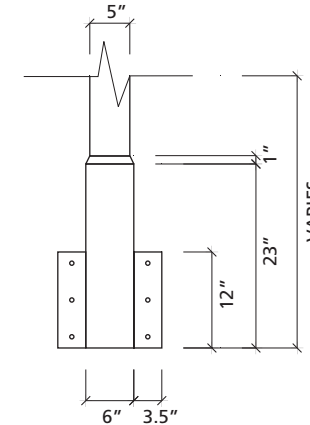
SIGN FACE LAYOUT - SIDE A

Scale: 1/2"=1'-0"



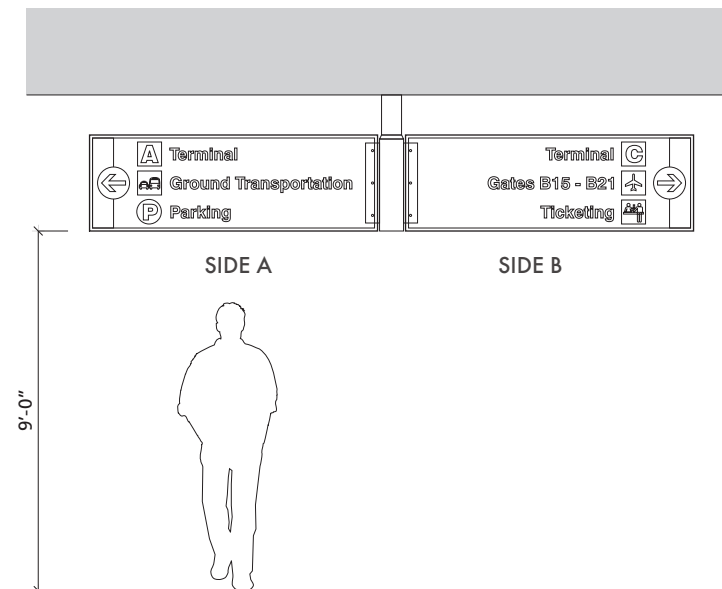
SIGN FACE LAYOUT - SIDE B

Scale: 1/2"=1'-0"



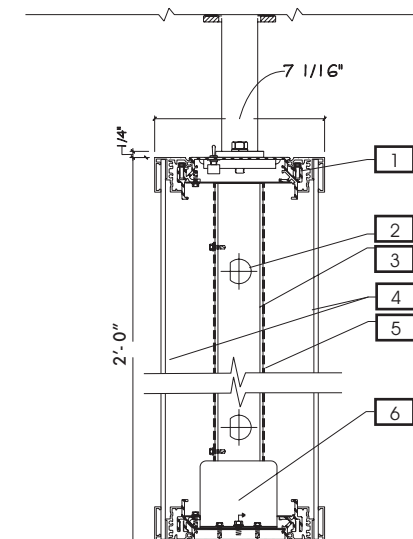
POLE

Scale: 1/2"=1'-0"



ELEVATION

Scale: N.T.S.



DETAIL (For Design Intent Only)

Scale: N.T.S.

Overhead - Directional **ST - 110**

**DESCRIPTION:** Overhead suspended with pole - 2 direction/ 3 levels of messaging.

**LOCATION:** Terminals. Primary circulation corridors perpendicular to the main pedestrian traffic flow.

**MATERIALS:** Extruded aluminum sign face structure with removable face panel.

**LETTERING:**  
 A Swiss721 BT Bold  
 B N/A

**SYMBOLGY:** (Refer to Section 2.2.2)

- COLORS:**
- 1 Background: 3M Opaque Film #7725-12 or approved equal (Black)
  - 2 Text: Translucent Acrylic (White)
  - 3 Band: N/A
  - 4 Symbol: Translucent Acrylic (White)
  - 5 Arrow: Translucent Acrylic (White)
  - 6 Terminal I.D. band:  
**Terminal A** 3M#230/230-127 (Intense Blue)  
**Terminal B** 3M#230/230-33 (Red)  
**Terminal C** 3M#230/230-26 (Green)  
**Terminal D** 3M#220-98 (Dark Violet)
  - 7 Arrow circle: 3M Opaque Film (Dark Grey) #7725-41

**GRAPHICS:** N/A

**ARROWS:** 6"x4.25" (Refer to Section 2.4.1)

**MOUNTING:** Overhead suspended with pole.

**ILLUMINATION:** Sign will be internally illuminated.

**REMARKS:** Refer to Section 2.5 for vinyl specifications.

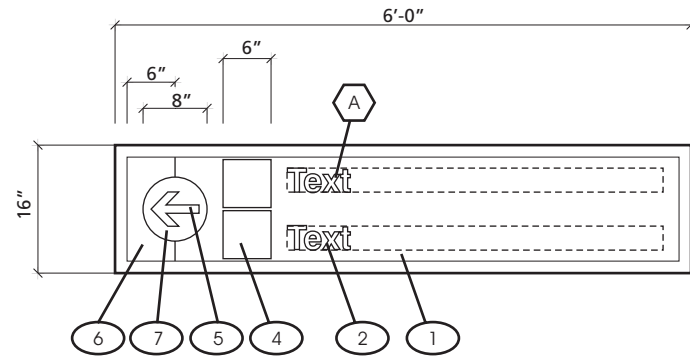
**NOTES:**

- 1 # 10-24 X 1/2"SS SCS hinge screw drill by 5/16" Dia. Use reference scoring 8" from ends typical
  - 2 D-Punch for fluor sockets
  - 3 2" X 2" X 1/8" alum channel raceway, socket support welded to base plate mtd. To frame w/ #8 X 1/2" SS TEK DP SMS
  - 4 3/16" signwhite polycarb faces mounted w/ 3M 4930 VHB FT
  - 5 .040" alum formed raceway cover, socket Support
- Panduit ABM25-A-C cable tie pad in raceway with panduit PLIM-C ZIP TIE 1/8" WIDE x 7/8"
- 6 Ballast France 688 DR

Directional Signs - Primary **3.5.1**

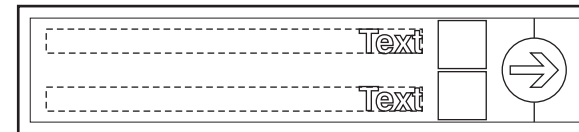


#	Revision	Date



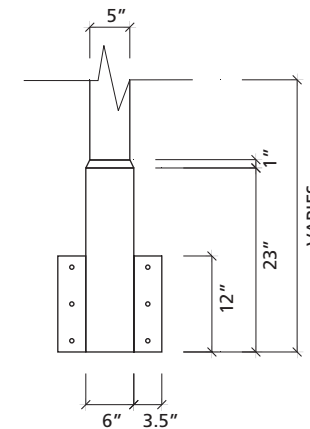
SIGN FACE LAYOUT - SIDE A

Scale: 1/2"=1'-0"



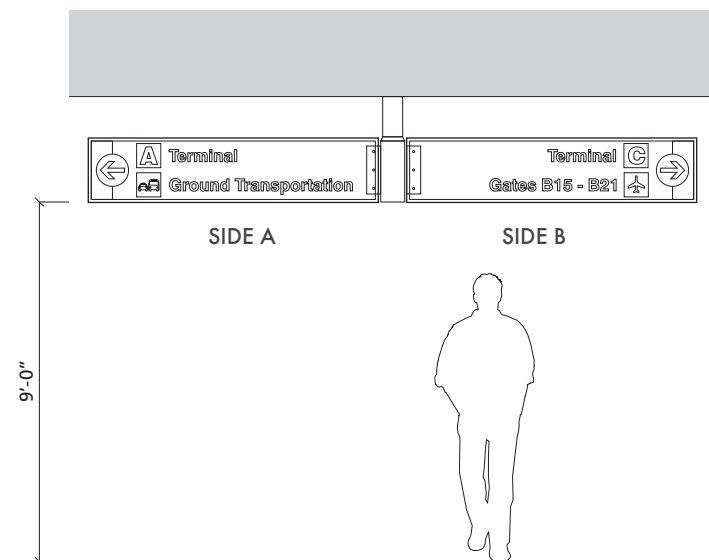
SIGN FACE LAYOUT - SIDE B

Scale: 1/2"=1'-0"



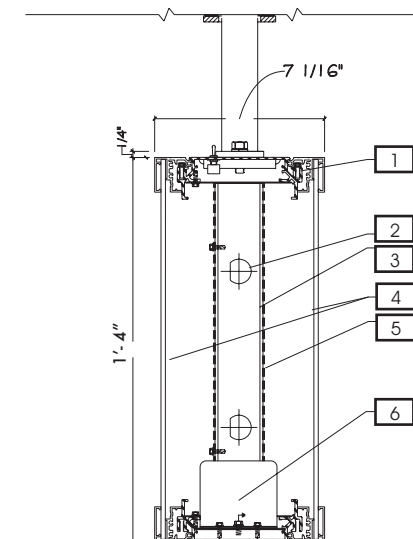
POLE

Scale: 1/2"=1'-0"



ELEVATION

Scale: N.T.S.



DETAIL (For Design Intent Only)

Scale: N.T.S.

Overhead - Directional **ST - 111**

**DESCRIPTION:** Overhead suspended with pole - 2 direction/2 levels of messaging.

**LOCATION:** Terminals. Primary circulation corridors perpendicular to the main pedestrian traffic flow.

**MATERIALS:** Extruded aluminum sign face structure with removable face panel.

**LETTERING:**  
 A Swiss721 BT Bold  
 B N/A

**SYMBOLGY:** (Refer to Section 2.2.2)

- COLORS:**
- 1 Background: 3M Opaque Film #7725-12 or approved equal (Black)
  - 2 Text: Translucent Acrylic (White)
  - 3 Band: N/A
  - 4 Symbol: Translucent Acrylic (White)
  - 5 Arrow: Translucent Acrylic (White)
  - 6 Terminal I.D. band:
    - Terminal A** 3M#230/230-127 (Intense Blue)
    - Terminal B** 3M#230/230-33 (Red)
    - Terminal C** 3M#230/230-26 (Green)
    - Terminal D** 3M#220-98 (Dark Violet)
  - 7 Arrow circle: 3M Opaque Film (Dark Grey) #7725-41

**GRAPHICS:** N/A

**ARROWS:** 6"x4.25" (Refer to Section 2.4.1)

**MOUNTING:** Overhead suspended with pole.

**ILLUMINATION:** Sign will be internally illuminated.

**REMARKS:** Refer to Section 2.5 for vinyl specifications.

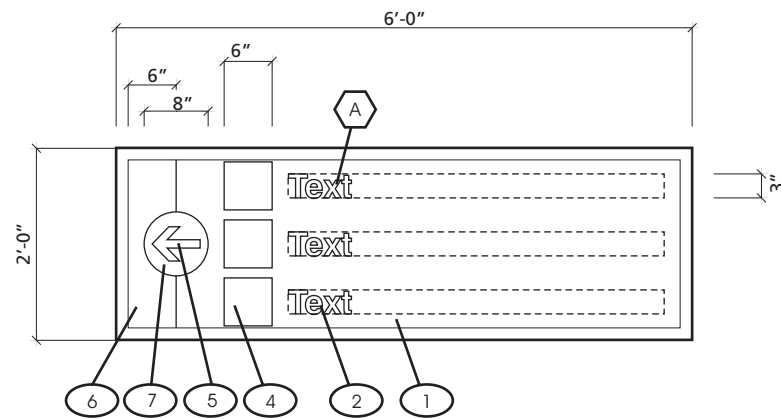
**NOTES:**

- 1 # 10-24 X 1/2"SS SCS hinge screw drill by 5/16" Dia. Use reference scoring 8" from ends typical
- 2 D-Punch for fluor sockets
- 3 2" X 2" X 1/8" alum channel raceway, socket support welded to base plate mtd. To frame w/ #8 X 1/2" SS TEK DP SMS
- 4 3/16" signwhite polycarb faces mounted w/ 3M 4930 VHB FT
- 5 .040" alum formed raceway cover, socket Support
- 6 Panduit ABM25-A-C cable tie pad in raceway with panduit PLIM-C ZIP TIE 1/8" WIDE x 7/8" Ballast France 688 DR

Directional Signs - Primary **3.5.1**

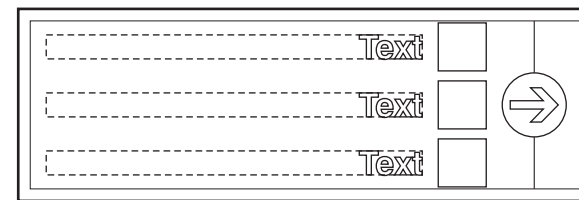


#	Revision	Date



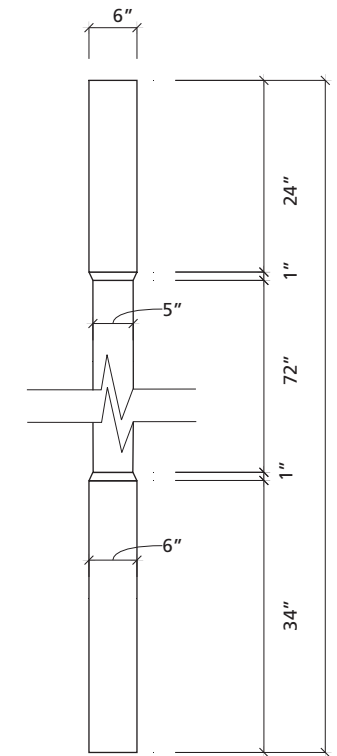
SIGN FACE LAYOUT - SIDE A

Scale: 1/2"=1'-0"



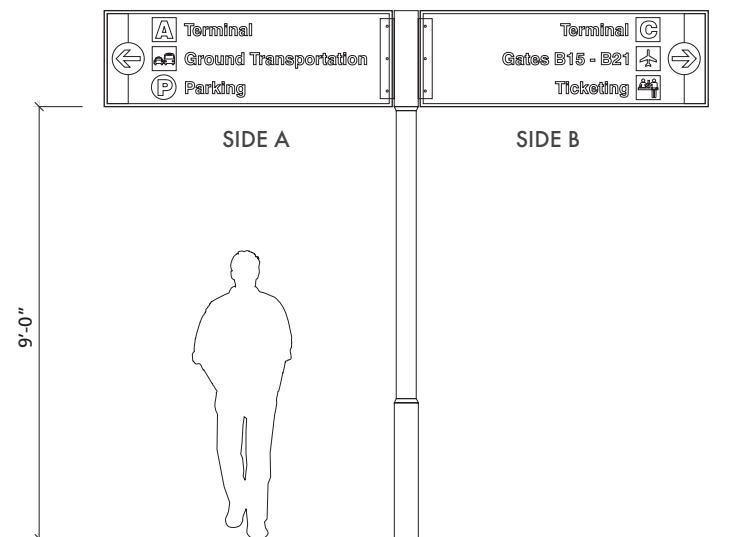
SIGN FACE LAYOUT - SIDE B

Scale: 1/2"=1'-0"



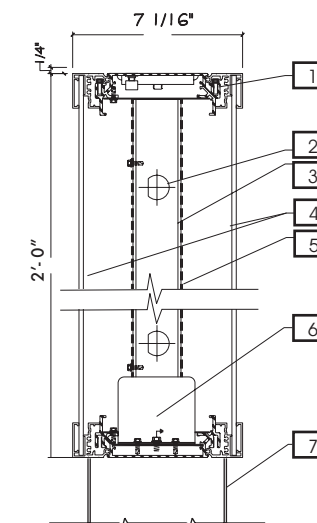
POLE

Scale: 1/2"=1'-0"



ELEVATION

Scale: N.T.S.



DETAIL (For Design Intent Only)

Scale: N.T.S.

**Post Mount - Directional ST - 112**

**DESCRIPTION:** Post mount -2 direction/ 3 levels of messaging.

**LOCATION:** Terminals. Primary circulation corridors perpendicular to the main pedestrian traffic flow.

**MATERIALS:** Extruded aluminum sign face structure with removable face panel.

**LETTERING:**  
 A Swiss721 BT Bold  
 B N/A

**SYMBOLGY:** (Refer to Section 2.2.2)

**COLORS:**  
 1 Background: 3M Opaque Film #7725-12 or approved equal (Black)  
 2 Text: Translucent Acrylic (White)  
 3 Band: N/A  
 4 Symbol: Translucent Acrylic (White)  
 5 Arrow: Translucent Acrylic (White)  
 6 Terminal I.D band:  
**Terminal A** 3M#230/230-127 (Intense Blue)  
**Terminal B** 3M#230/230-33 (Red)  
**Terminal C** 3M#230/230-26 (Green)  
**Terminal D** 3M#220-98 (Dark Violet)  
 7 Arrow circle: 3M Opaque Film (Dark Grey) #7725-41

**GRAPHICS:** N/A

**ARROWS:** 6"x4.25" (Refer to Section 2.4.1)

**MOUNTING:** Post mount.

**ILLUMINATION:** Sign will be internally illuminated.

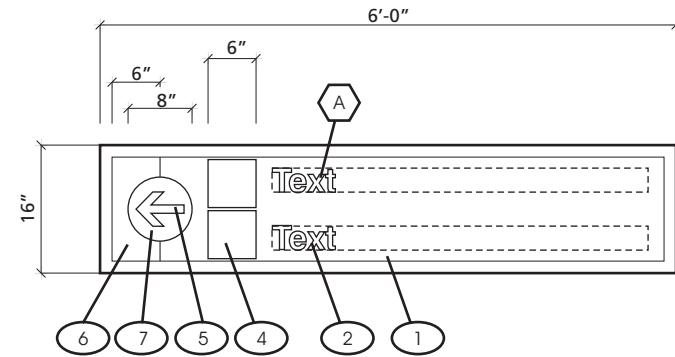
**REMARKS:** Refer to Section 2.5 for vinyl specifications.

- NOTES:**
- # 10-24 X 1/2"SS SCS hinge screw drill by 5/16" Dia. Use reference scoring 8" from ends typical
  - D-Punch for fluor sockets
  - 2" X 2" X 1/8" alum channel raceway, socket support welded to base plate mtd. To frame w/ #8 X 1/2" SS TEK DP SMS
  - 3/16" signwhite polycarb faces mounted w/ 3M 4930 VHB FT
  - .040" alum formed raceway cover, socket Support
  - Panduit ABM25-A-C cable tie pad in raceway with panduit PLIM-C ZIP TIE 1/8" WIDE x 7/8"
  - Ballast France 688 DR
  - Aluminum arm support 6" Dia. At connecting Point.

**Directional Signs - Primary 3.5.1**

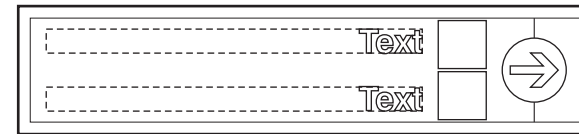


#	Revision	Date



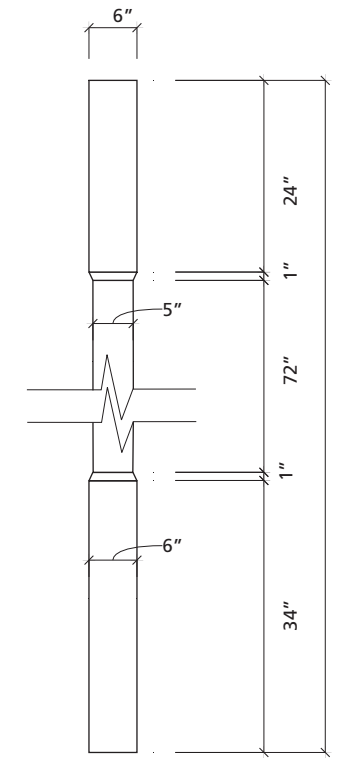
SIGN FACE LAYOUT - SIDE A

Scale: 1/2"=1'-0"



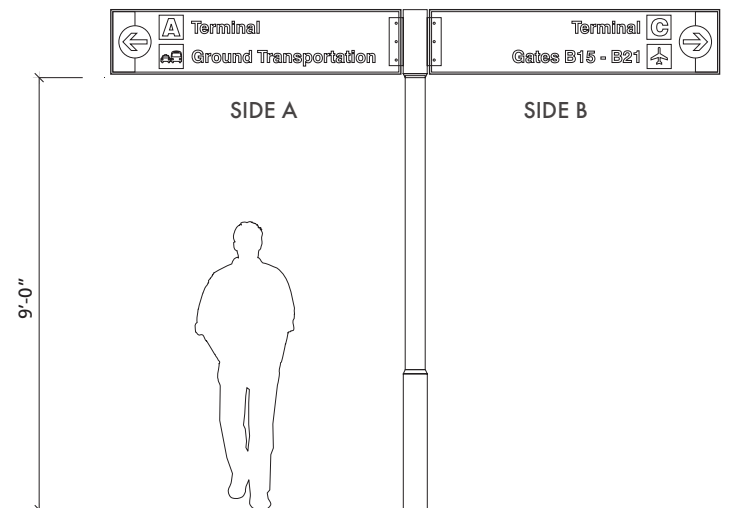
SIGN FACE LAYOUT - SIDE B

Scale: 1/2"=1'-0"



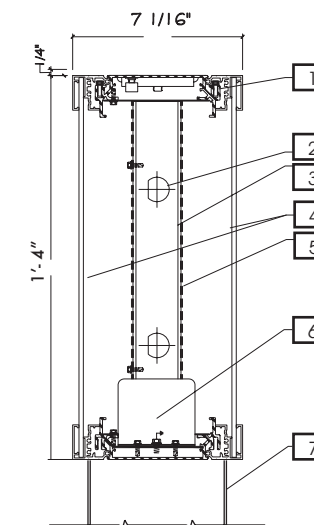
POLE

Scale: 1/2"=1'-0"



ELEVATION

Scale: N.T.S.



DETAIL (For Design Intent Only)

Scale: N.T.S.

**Post Mount - Directional ST - 113**

**DESCRIPTION:** Post mount -2 direction / 2 levels of messaging.

**LOCATION:** Terminals. Primary circulation corridors perpendicular to the main pedestrian traffic flow.

**MATERIALS:** Extruded aluminum sign face structure with removable face panel.

**LETTERING:**  
 A Swiss721 BT Bold  
 B N/A

**SYMBOLGY:** (Refer to Section 2.2.2)

- COLORS:**
- 1 Background: 3M Opaque Film #7725-12 or approved equal (Black)
  - 2 Text: Translucent Acrylic (White)
  - 3 Band: N/A
  - 4 Symbol: Translucent Acrylic (White)
  - 5 Arrow: Translucent Acrylic (White)
  - 6 Terminal I.D band:
    - Terminal A 3M#230/230-127 (Intense Blue)
    - Terminal B 3M#230/230-33 (Red)
    - Terminal C 3M#230/230-26 (Green)
    - Terminal D 3M#220-98 (Dark Violet)
  - 7 Arrow circle: 3M Opaque Film (Dark Grey) #7725-41

**GRAPHICS:** N/A

**ARROWS:** 6"x4.25" (Refer to Section 2.4.1)

**MOUNTING:** Post mount.

**ILLUMINATION:** Sign will be internally illuminated.

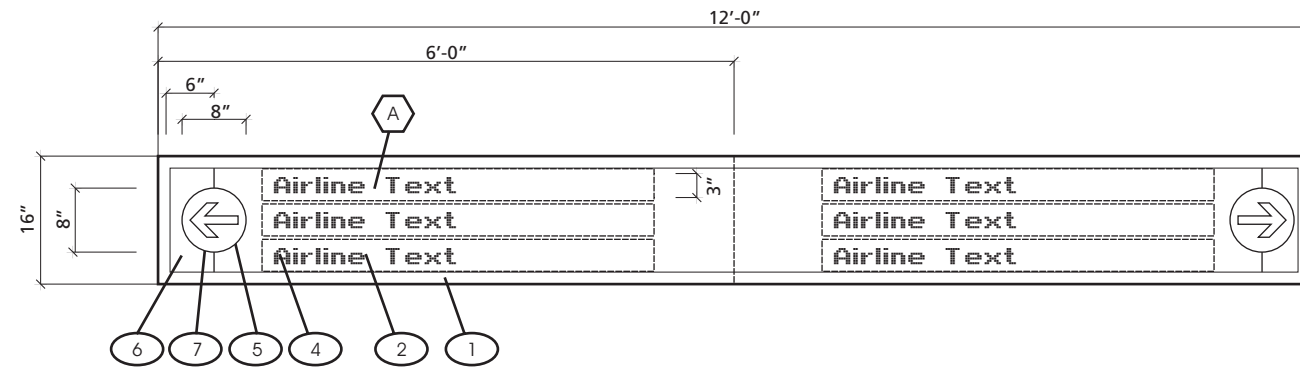
**REMARKS:** Refer to Section 2.5 for vinyl specifications.

- NOTES:**
- 1 # 10-24 X 1/2"SS SCS hinge screw drill by 5/16" Dia. Use reference scoring 8" from ends typical
  - 2 D-Punch for fluor sockets
  - 3 2" X 2" X 1/8" alum channel raceway, socket support welded to base plate mtd. To frame w/ #8 X 1/2" SS TEK DP SMS
  - 4 3/16" signwhite polycarb faces mounted w/ 3M 4930 VHB FT
  - 5 .040" alum formed raceway cover, socket Support
  - 6 Panduit ABM25-A-C cable tie pad in raceway with panduit PLIM-C ZIP TIE 1/8" WIDE x 7/8"
  - 7 Ballast France 688 DR
  - 8 Aluminum arm support 6" Dia. At connecting Point.

**Directional Signs - Primary 3.5.1**

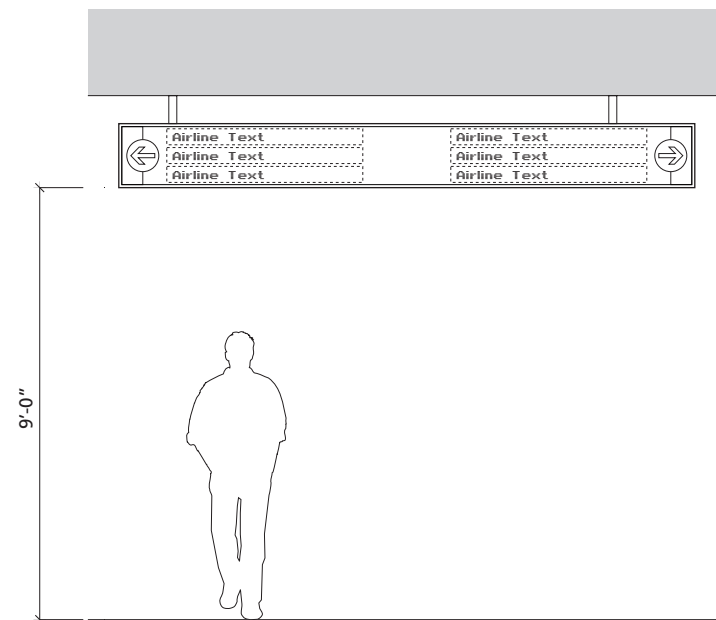


#	Revision	Date



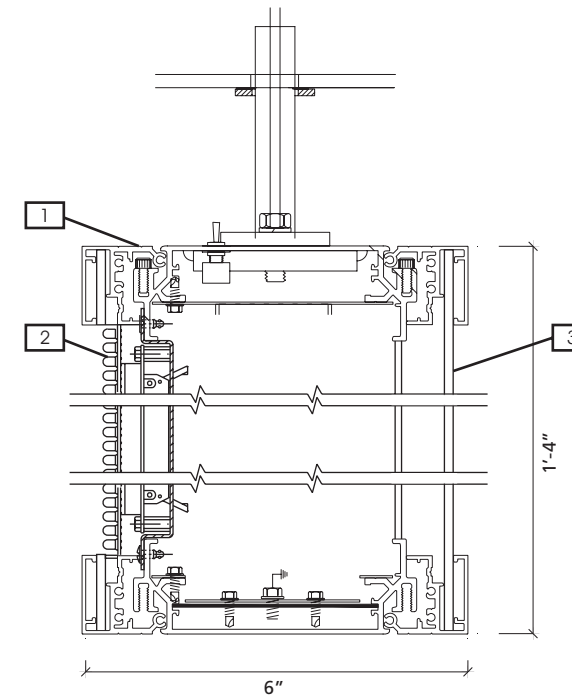
SIGN FACE LAYOUT - OPTION A

Scale: 1/2"=1'-0"



ELEVATION

Scale: N.T.S.



DETAIL (For Design Intent Only)

Scale: 3"=1'-0"

**Overhead - Directional** **ST - 121**

**DESCRIPTION:** Overhead suspended airline listing (Dynamic) - 2 direction / 3 levels of messaging.

**LOCATION:** Terminals. Primary circulation corridors perpendicular to the main pedestrian traffic flow at Terminal entrances

**MATERIALS:** Extruded aluminum sign face structure with removable face panel.

**LETTERING:**

- Ⓐ N/A
- Ⓑ N/A

**SYMBOLGY:** (Refer to Section 2.2.2)

**COLORS:**

- ① Background: 3M Opaque Film #7725-12 or approved equal (Black)
- ② Text: VMS Red reading
- ③ Band: N/A
- ④ Symbol: N/A
- ⑤ Arrow: Translucent Acrylic (White)
- ⑥ Terminal I.D band:
  - Terminal A** 3M#230/230-127 (Intense Blue)
  - Terminal B** 3M#230/230-33 (Red)
  - Terminal C** 3M#230/230-26 (Green)
  - Terminal D** 3M#220-98 (Dark Violet)
- ⑦ Arrow circle: 3M Opaque Film (Dark Grey) #7725-41

**GRAPHICS:** N/A

**ARROWS:** 6"x4.25" (Refer to Section 2.4.1)

**MOUNTING:** Overhead suspended.

**ILLUMINATION:** Sign will be internally illuminated.

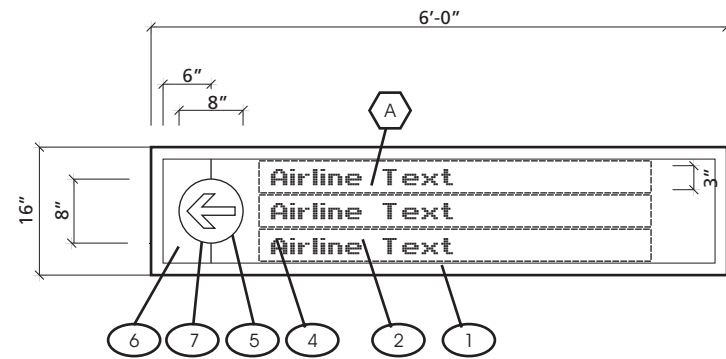
**NOTES:**

- ① # 10-24 X 1/2"SS SCS hinge screw drill by 5/16" Dia. Use reference scoring 8" from ends Typical
- ② LED/VMS Module
- ③ 3/16" signwhite polycarb faces mounted w/ 3M 4930 VHB FT

**Directional Signs - Primary** **3.5.1**

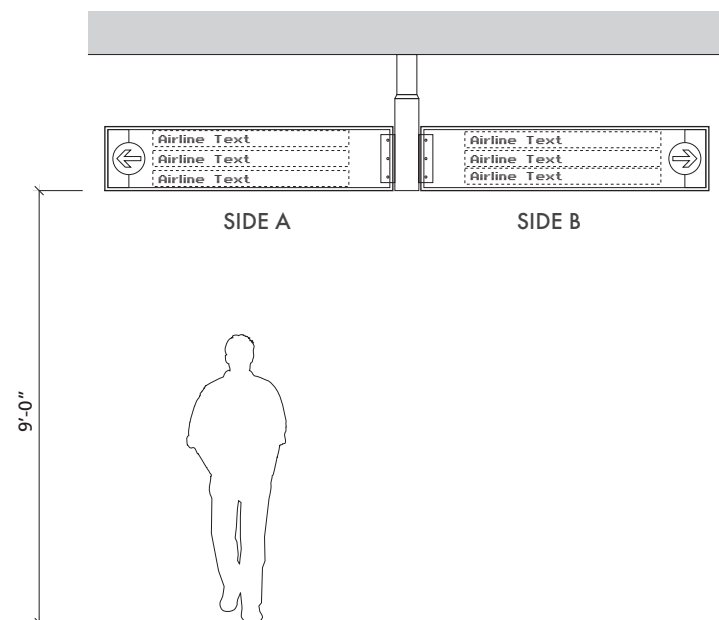


#	Revision	Date



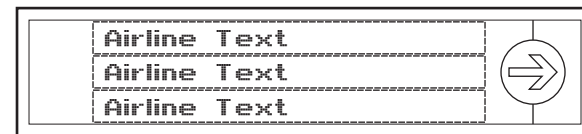
SIGN FACE LAYOUT - SIDE A

Scale: 1/2"=1'-0"



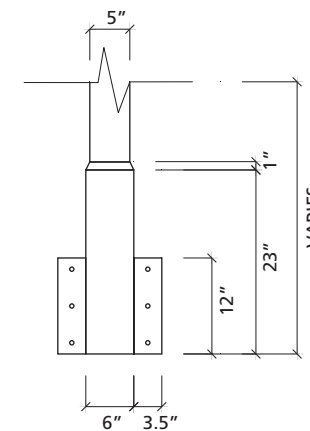
ELEVATION

Scale: N.T.S.



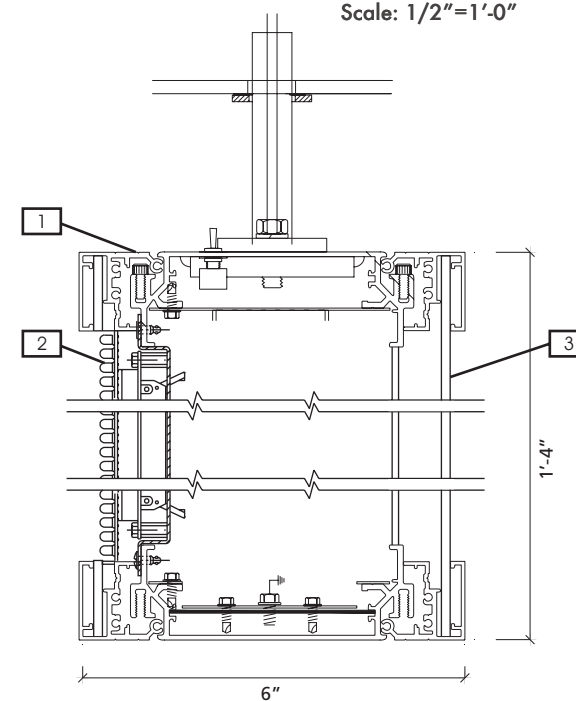
SIGN FACE LAYOUT - SIDE B

Scale: 1/2"=1'-0"



POLE

Scale: 1/2"=1'-0"



DETAIL (For Design Intent Only)

Scale: 3"=1'-0"

**Overhead - Directional** **ST - 122**

**DESCRIPTION:** Overhead suspended airline listing (Dynamic) - 2 direction / 3 levels of messaging.

**LOCATION:** Terminals. Primary circulation corridors perpendicular to the main pedestrian traffic flow at Terminal entrances.

**MATERIALS:** Extruded aluminum sign face structure with removable face panel.

**LETTERING:**

- Ⓐ N/A
- Ⓑ N/A

**SYMBOLGY:** (Refer to Section 2.2.2)

**COLORS:**

- ① Background: 3M Opaque Film #7725-12 or approved equal (Black)
- ② Text: VMS Red reading
- ③ Band: N/A
- ④ Symbol: N/A
- ⑤ Arrow: Translucent Acrylic (White)
- ⑥ Terminal I.D band:
  - Terminal A** 3M#230/230-127 (Intense Blue)
  - Terminal B** 3M#230/230-33 (Red)
  - Terminal C** 3M#230/230-26 (Green)
  - Terminal D** 3M#220-98 (Dark Violet)
- ⑦ Arrow circle: 3M Opaque Film (Dark Grey) #7725-41

**GRAPHICS:** N/A

**ARROWS:** 6"x4.25" (Refer to Section 2.4.1)

**MOUNTING:** Overhead suspended.

**ILLUMINATION:** Sign will be internally illuminated.

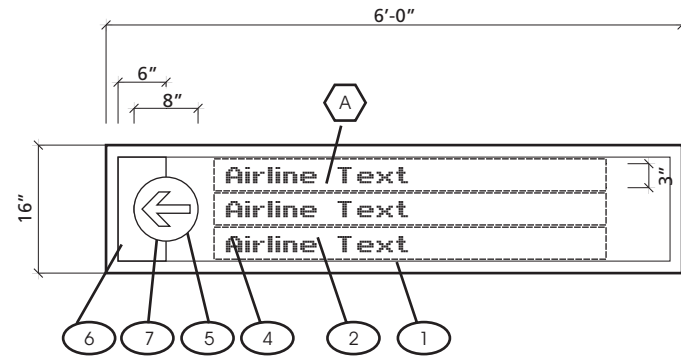
**NOTES:**

- ① # 10-24 X 1/2"SS SCS hinge screw drill by 5/16" Dia. Use reference scoring 8" from ends typical
- ② LED/VMS Module
- ③ 3/16" signwhite polycarb faces mounted w/ 3M 4930 VHB FT

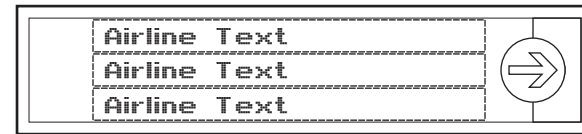
**Directional Signs - Primary** **3.5.1**



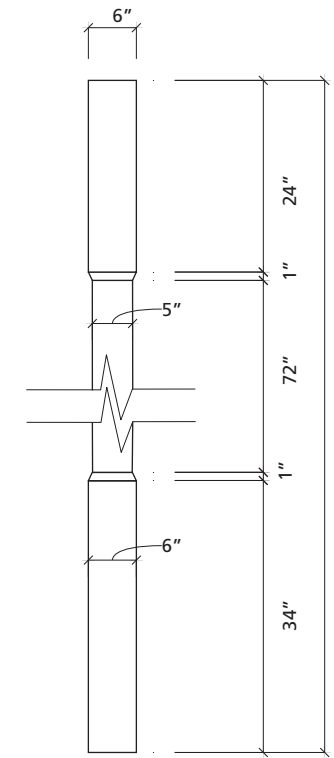
#	Revision	Date



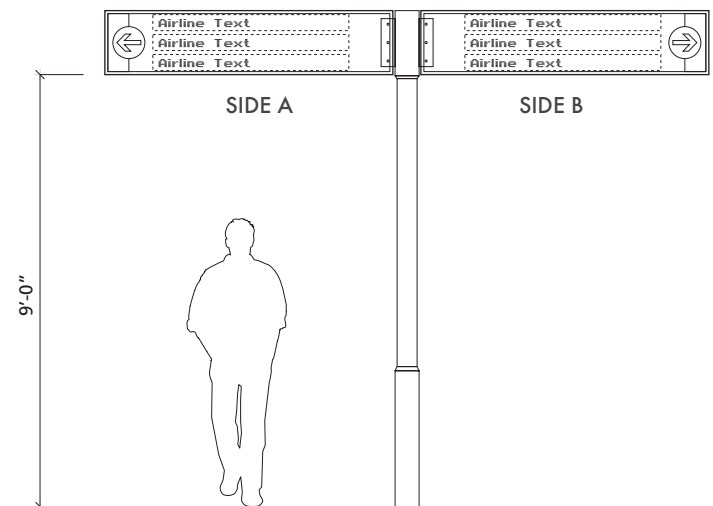
SIGN FACE LAYOUT - SIDE A  
Scale: 1/2"=1'-0"



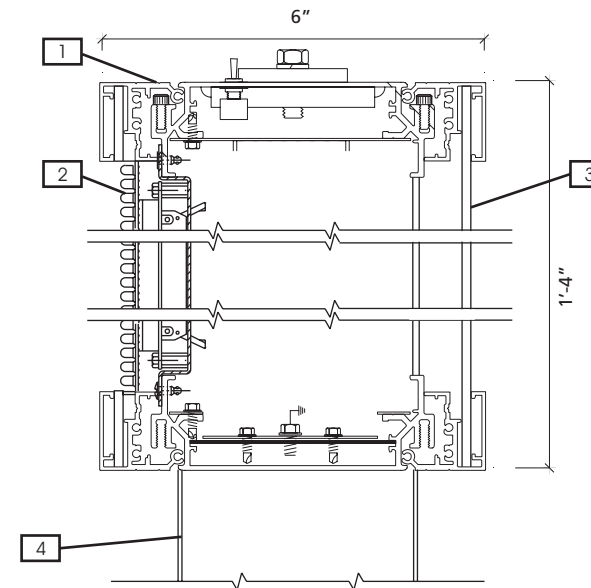
SIGN FACE LAYOUT - SIDE B  
Scale: 1/2"=1'-0"



POLE  
Scale: 1/2"=1'-0"



ELEVATION  
Scale: N.T.S.



DETAIL (For Design Intent Only)  
Scale: 3"=1'-0"

**Post Mount - Directional ST - 123**

**DESCRIPTION:** Post mount airline listing (Dynamic) - 2 direction / 3 levels of messaging.

**LOCATION:** Terminals. Primary circulation corridors perpendicular to the main pedestrian traffic flow at Terminal entrances.

**MATERIALS:** Extruded aluminum sign face structure with removable face panel.

**LETTERING:**  
 A N/A  
 B N/A

**SYMBOLGY:** (Refer to Section 2.2.2)

- COLORS:**
- 1 Background: 3M Opaque Film #7725-12 or approved equal (Black)
  - 2 Text: VMS Red reading
  - 3 Band: N/A
  - 4 Symbol: N/A
  - 5 Arrow: Translucent Acrylic (White)
  - 6 Terminal I.D. band:
    - Terminal A** 3M#230/230-127 (Intense Blue)
    - Terminal B** 3M#230/230-33 (Red)
    - Terminal C** 3M#230/230-26 (Green)
    - Terminal D** 3M#220-98 (Dark Violet)
  - 7 Arrow circle: 3M Opaque Film (Dark Grey) #7725-41

**GRAPHICS:** N/A

**ARROWS:** 6"x4.25" (Refer to Section 2.4.1)

**MOUNTING:** Post mount.

**ILLUMINATION:** Sign will be internally illuminated.

**REMARKS:** Refer to Section 2.5 for vinyl specifications.

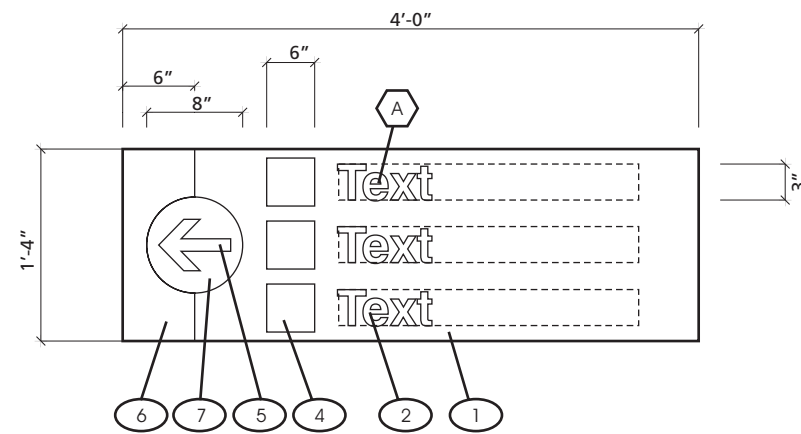
- NOTES:**
- 1 # 10-24 X 1/2"SS SCS hinge screw drill by 5/16" Dia. Use reference scoring 8" from ends Typical
  - 2 LED/VMS Module
  - 3 3/16" signwhite polycarb faces mounted w/ 3M 4930 VHB FT
  - 4 2 1/2" Dia. X .125" wall aluminum tube

**Directional Signs - Primary 3.5.1**



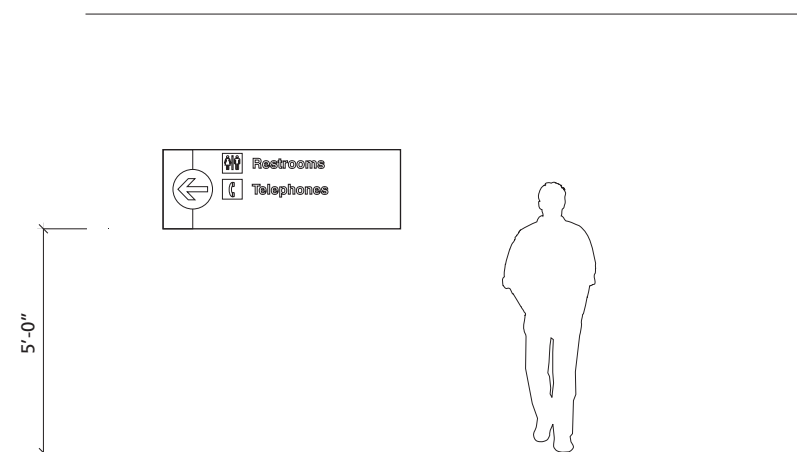


#	Revision	Date



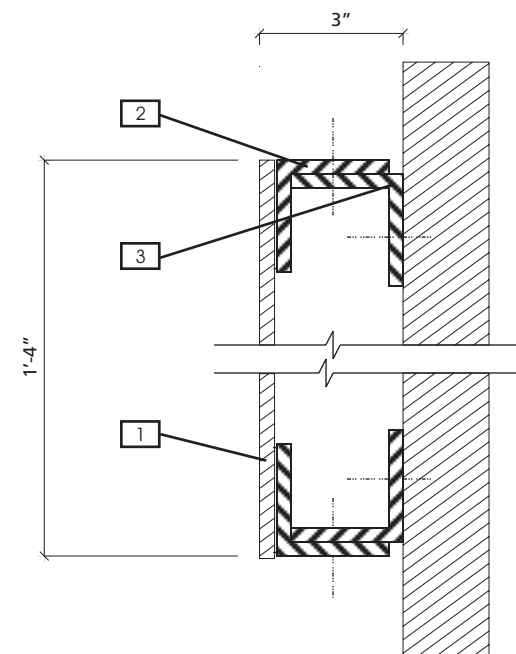
SIGN FACE LAYOUT - OPTION A

Scale: 3/4"=1'-0"



ELEVATION - OPTION A

Scale: N.T.S.



DETAIL (For Design Intent Only)

Scale: 3"=1'-0"

Wall Mount - Directional **ST - 124**

**DESCRIPTION:** Wall mount - 1 direction / 3 levels of messaging.

**LOCATION:** Terminals. Secondary circulation corridors perpendicular to the main pedestrian traffic flow.

**MATERIALS:** Extruded aluminum sign face structure with removable face panel.

**LETTERING:**

- Ⓐ Swiss721 BT Bold
- Ⓑ N/A

**SYMBOLGY:** (Refer to Section 2.2.2)

**COLORS:**

- ① Background: 3M Opaque Film #7725-12 or approved equal (Black)
- ② Text: Translucent Acrylic (White)
- ③ Band: N/A
- ④ Symbol: Translucent Acrylic (White)
- ⑤ Arrow: Translucent Acrylic (White)
- ⑥ Terminal I.D band:
  - Terminal A** 3M#230/230-127 (Intense Blue)
  - Terminal B** 3M#230/230-33 (Red)
  - Terminal C** 3M#230/230-26 (Green)
  - Terminal D** 3M#220-98 (Dark Violet)
- ⑦ Arrow circle: 3M Opaque Film (Dark Grey) #7725-41

**GRAPHICS:** N/A

**ARROWS:** 6"x4.25" (Refer to Section 2.4.1)

**MOUNTING:** Wall mount.

**ILLUMINATION:** Sign will be non illuminated.

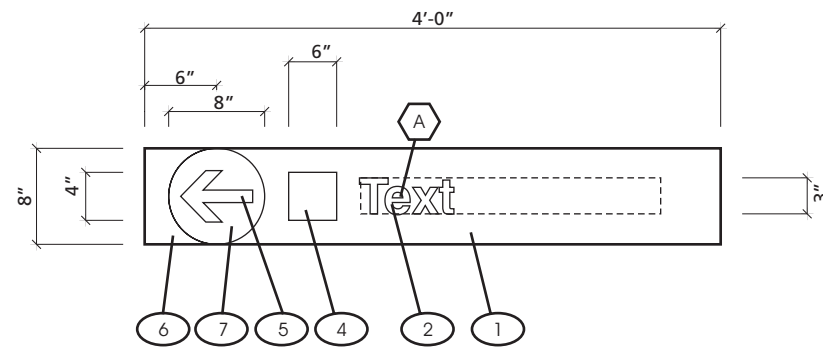
**NOTES:**

- 1 .125" aluminum panel secured to angle frame.
- 2 1"x1"x.125" aluminum angle frame.
- 3 1"x1"x.125" aluminum mounting bracket.

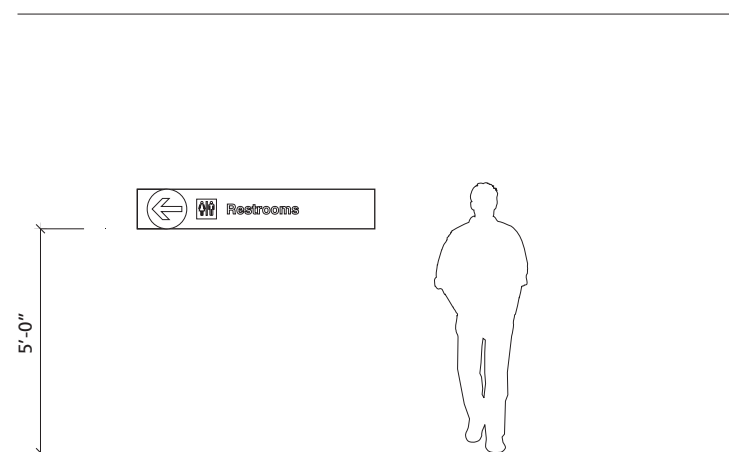
Directional Signs - Secondary **3.5.1**



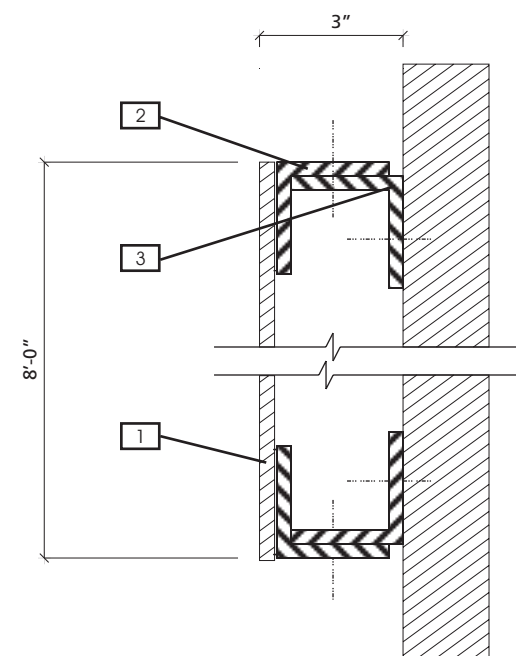
#	Revision	Date



SIGN FACE LAYOUT  
Scale: 3/4"=1'-0"



ELEVATION  
Scale: N.T.S.



DETAIL (For Design Intent Only)  
Scale: 3"=1'-0"

Wall Mount - Directional **ST - 125**

**DESCRIPTION:** Wall mount -1 direction/ 1 level of messaging.

**LOCATION:** Terminals. Secondary circulation corridors perpendicular to the main pedestrian traffic flow.

**MATERIALS:** Extruded aluminum sign face structure with removable face panel.

**LETTERING:**  
 A Swiss721 BT Bold  
 B N/A

**SYMBOLGY:** (Refer to Section 2.2.2)

**COLORS:**  
 1 Background: 3M Opaque Film #7725-12 or approved equal (Black)  
 2 Text: Translucent Acrylic (White)  
 3 Band: N/A  
 4 Symbol: Translucent Acrylic (White)  
 5 Arrow: Translucent Acrylic (White)  
 6 Terminal I.D band:  
**Terminal A** 3M#230/230-127 (Intense Blue)  
**Terminal B** 3M#230/230-33 (Red)  
**Terminal C** 3M#230/230-26 (Green)  
**Terminal D** 3M#220-98 (Dark Violet)  
 7 Arrow circle: 3M Opaque Film (Dark Grey) #7725-41

**GRAPHICS:** N/A

**ARROWS:** 6"x4.25" (Refer to Section 2.4.1)

**MOUNTING:** Wall mount.

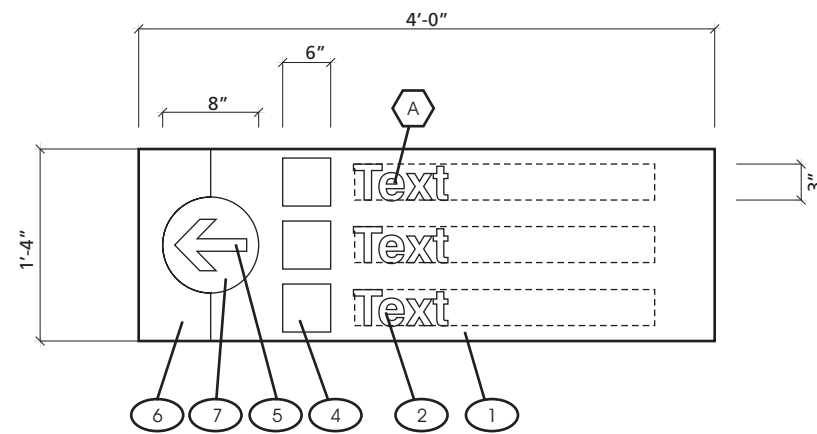
**ILLUMINATION:** Sign will be non illuminated.

**NOTES:**  
 1 .125" aluminum panel secured to angle frame.  
 2 1"x1"x.125" aluminum angle frame.  
 3 1"x1"x.125" aluminum mounting bracket.

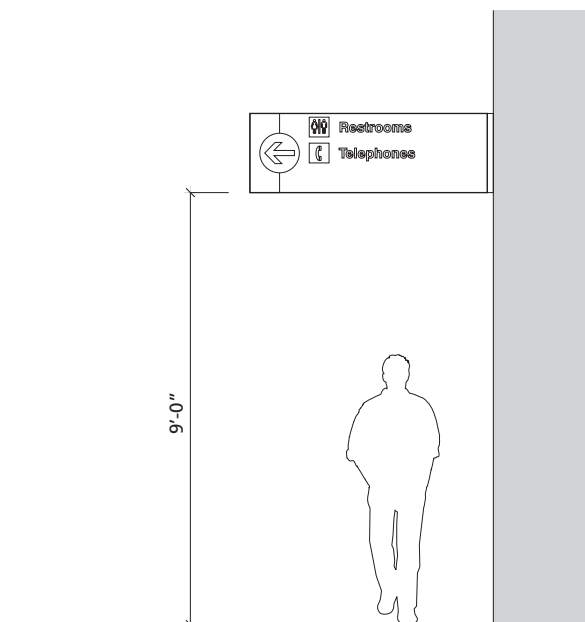
Directional Signs - Secondary **3.5.1**



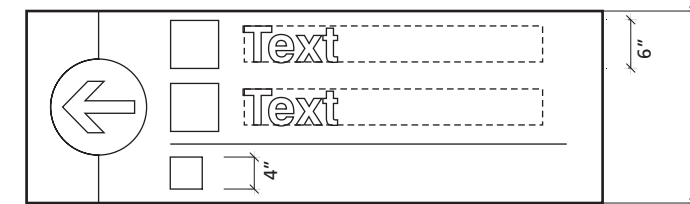
#	Revision	Date



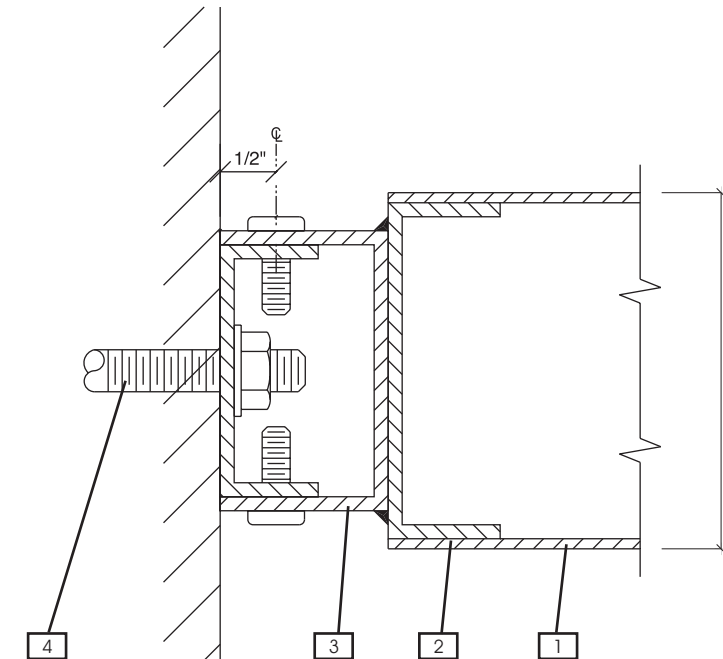
SIGN FACE LAYOUT - OPTION A  
Scale: 3/4"=1'-0"



ELEVATION - OPTION A  
Scale: N.T.S.



SIGN FACE LAYOUT - OPTION B  
Scale: 3/4"=1'-0"



DETAIL (For Design Intent Only)  
Scale: N.T.S.

**Flag Mount - Directional** **ST - 126**

**DESCRIPTION:** Flag mount -1 direction/ 3 levels of messaging.

**LOCATION:** Terminals. Secondary circulation corridors perpendicular to the main pedestrian traffic flow.

**MATERIALS:** Extruded aluminum sign face structure with removable face panel.

**LETTERING:**  
 A Swiss721 BT Bold  
 B N/A

**SYMBOLGY:** (Refer to Section 2.2.2)

- COLORS:**
- 1 Background: 3M Opaque Film #7725-12 or approved equal (Black)
  - 2 Text: Translucent Acrylic (White)
  - 3 Band: N/A
  - 4 Symbol: Translucent Acrylic (White)
  - 5 Arrow: Translucent Acrylic (White)
  - 6 Terminal I.D band:
    - Terminal A** 3M#230/230-127 (Intense Blue)
    - Terminal B** 3M#230/230-33 (Red)
    - Terminal C** 3M#230/230-26 (Green)
    - Terminal D** 3M#220-98 (Dark Violet)
  - 7 Arrow circle: 3M Opaque Film (Dark Grey) #7725-41

**GRAPHICS:** N/A

**ARROWS:** 6"x4.25" (Refer to Section 2.4.1)

**MOUNTING:** Flag Mount.

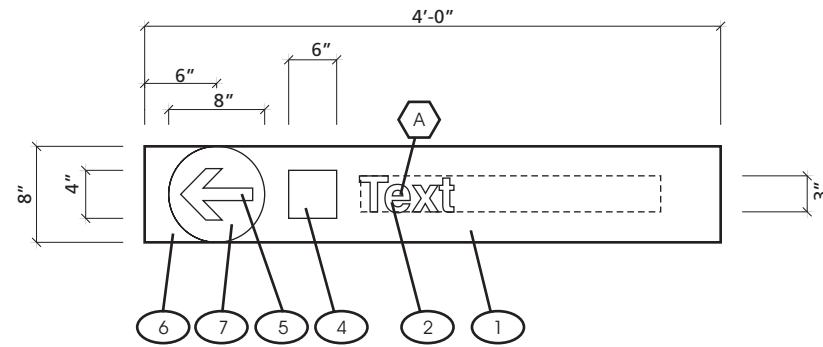
**ILLUMINATION:** Sign will be non illuminated.

- NOTES:**
- 1 .090" Aluminum face.
  - 2 3"x1"x.125" Aluminum channel frame with mitered and welded corners.
  - 3 2 1/2"x1 1/2"x.125" Aluminum channel with capped ends - weld to channel frame.
  - 4 3/8" Dia. Mounting stud. (by others).

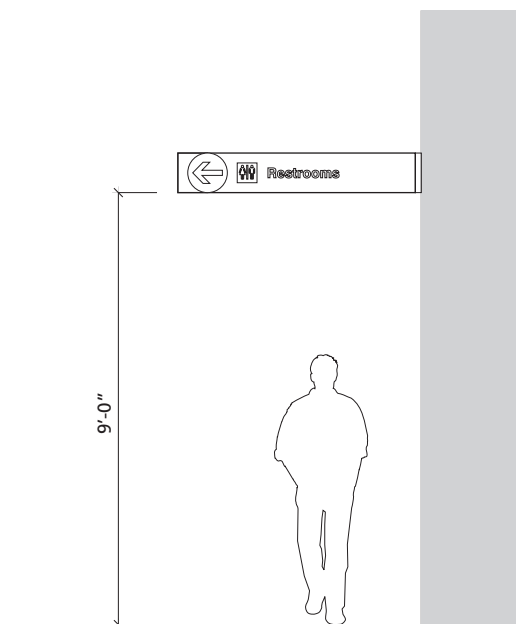
**Directional Signs - Secondary** **3.5.1**



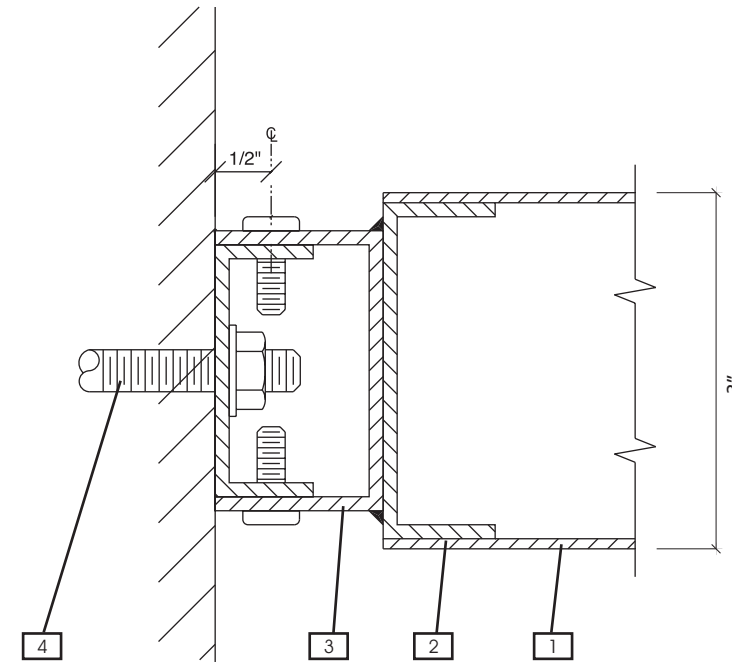
#	Revision	Date



SIGN FACE LAYOUT  
Scale: 3/4"=1'-0"



ELEVATION  
Scale: N.T.S.



DETAIL (For Design Intent Only)  
Scale: N.T.S.

**Flag Mount - Directional** **ST - 127**

**DESCRIPTION:** Flag mount -1 direction /1 levels of messaging.

**LOCATION:** Terminals. Secondary circulation corridors perpendicular to the main pedestrian traffic flow.

**MATERIALS:** Extruded aluminum sign face structure with removable face panel.

**LETTERING:**  
 A Swiss721 BT Bold  
 B N/A

**SYMBOLGY:** (Refer to Section 2.2.2)

**COLORS:**  
 1 Background: 3M Opaque Film #7725-12 or approved equal (Black)  
 2 Text: Translucent Acrylic (White)  
 3 Band: N/A  
 4 Symbol: Translucent Acrylic (White)  
 5 Arrow: Translucent Acrylic (White)  
 6 Terminal I.D. band:  
**Terminal A** 3M#230/230-127 (Intense Blue)  
**Terminal B** 3M#230/230-33 (Red)  
**Terminal C** 3M#230/230-26 (Green)  
**Terminal D** 3M#220-98 (Dark Violet)  
 7 Arrow circle: 3M Opaque Film (Dark Grey) #7725-41

**GRAPHICS:** N/A

**ARROWS:** 6"x4.25" (Refer to Section 2.4.1)

**MOUNTING:** Flag mount.

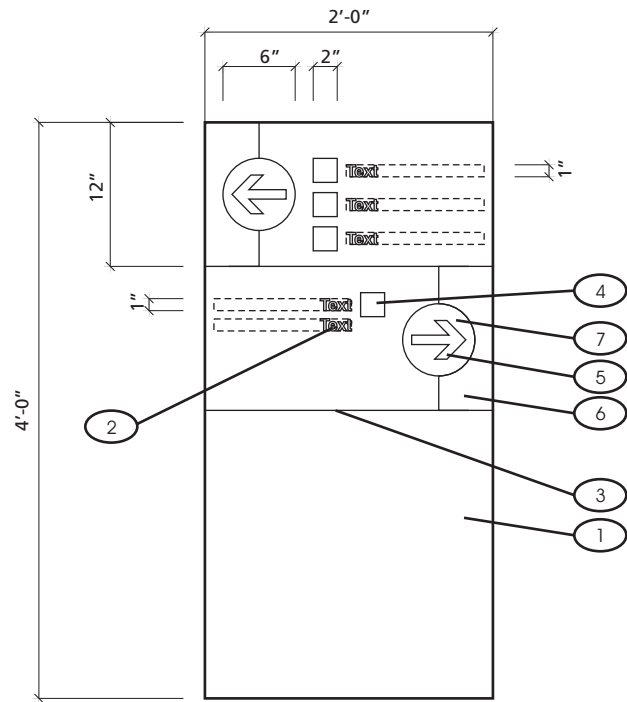
**ILLUMINATION:** Sign will be non illuminated.

**NOTES:**  
 1 .090" Aluminum face.  
 2 3"x1"x.125" Aluminum channel frame with mitered and welded corners.  
 3 2 1/2"x1 1/2"x.125" Aluminum channel with capped ends - weld to channel frame.  
 4 3/8" Dia. Mounting stud. (by others).

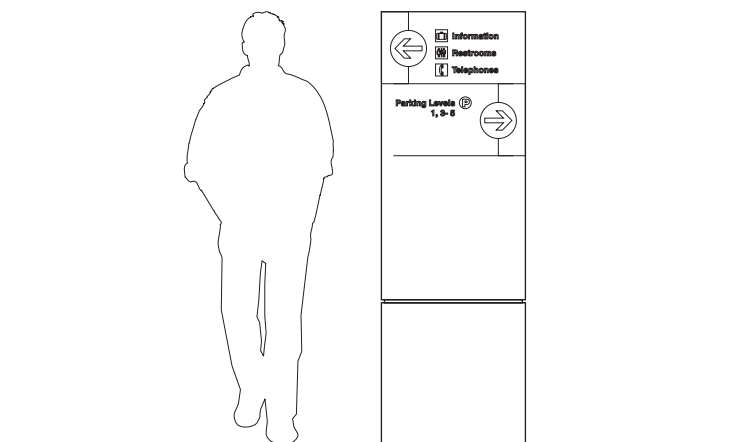
**Directional Signs - Secondary** **3.5.1**



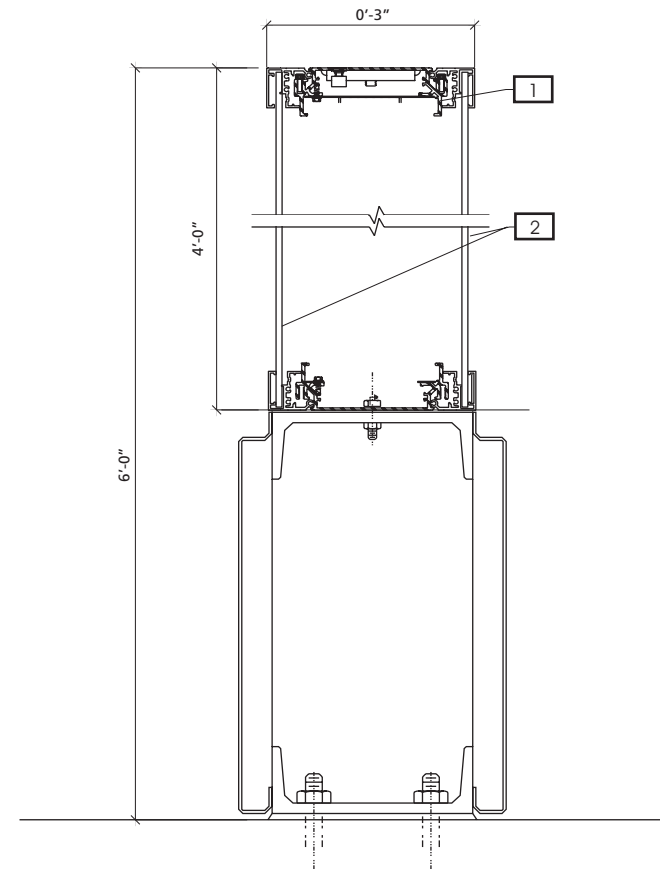
#	Revision	Date



SIGN FACE LAYOUT  
Scale: 3/4"=1'-0"



ELEVATION  
Scale: N.T.S.



DETAIL (For Design Intent Only)  
Scale: N.T.S.

**Floor Mount - Directional ST - 128**

**DESCRIPTION:** Floor mount -2 direction/ up to 6 levels of messaging.

**LOCATION:** Terminals. Secondary circulation corridors perpendicular to the main pedestrian traffic flow.

**MATERIALS:** Extruded aluminum sign face structure with removable face panel.

**LETTERING:**  
 (A) Swiss721 BT Bold  
 (B) N/A

**SYMBOLGY:** (Refer to Section 2.2.2)

- COLORS:**
- (1) Background: 3M Opaque Film #7725-10 or approved equal (Black)
  - (2) Text: 3M Opaque Film # 220-10 (White)
  - (3) Band: 3M Opaque Film # 220-10 (White)
  - (4) Symbol: 3M Opaque Film # 220-10 (White)
  - (5) Arrow: 3M Opaque Film # 220-10 (White)
  - (6) Terminal I.D. band:  
**Terminal A** 3M#230/230-127 (Intense Blue)  
**Terminal B** 3M#230/230-33 (Red)  
**Terminal C** 3M#230/230-26 (Green)  
**Terminal D** 3M#220-98 (Dark Violet)
  - (7) Arrow circle: 3M Opaque Film (Dark Grey) #7725-41

**GRAPHICS:** N/A

**ARROWS:** 4.5"x3.25" (Refer to Section 2.4.1)

**MOUNTING:** Floor mount.

**ILLUMINATION:** Sign will be non-illuminated.  
**REMARKS:** Refer to Section 2.5 for vinyl specifications.

- NOTES:**
- (1) # 10-24 X 1/2"SS SCS hinge screw drill by 5/16" Dia. Use reference scoring 8" from ends typical
  - (2) 3/16" signwhite polycarb faces mounted w/ 3M 4930 VHB FT

**Directional Signs - Secondary 3.5.1**