

# LOGAN TERMINAL AMENITIES GUIDELINES

DECEMBER, 2020





# TABLE OF CONTENTS

## MOTHER'S ROOM

---

RESEARCH	PAGES
BEST PRACTICES	8-9
PRECEDENTS	10-14
DESIGN STUDIES	
MATERIALITY	15
SPACE PLANNING OPTIONS	16-17
PROTOTYPE	
DESIGN GUIDELINES, FURNITURE AND FITTINGS	18
MATERIALS	19
MATERIALS BASIS-OF-DESIGN	20
PROTOTYPE PLAN A AND RENDERING	21
PROTOTYPE PLAN B AND INTERIOR ELEVATIONS	22

## SENSORY ROOM

---

RESEARCH	PAGES
BEST PRACTICES	26-27
PRECEDENTS	28-30
DESIGN STUDIES	
MATERIALITY & LIGHTING	31
DESIGN CONSIDERATIONS	32
PRELIMINARY DESIGN OPTIONS	33-35
PRELIMINARY 3D SKETCH	36-37





# TABLE OF CONTENTS

## SENSORY ROOM

---

PROTOTYPE	PAGES
FLOOR PLAN A AND PRODUCTS	38-39
FLOOR PLAN B AND ELEVATIONS	40-41

## REFLECTION ROOM

---

RESEARCH	PAGES
SYMBOLOLOGY	44
PRECEDENTS	45-48
DESIGN STUDIES	
MATERIALITY & LIGHTING	49
DESIGN CONSIDERATIONS	50
PRELIMINARY OPTIONS	51-53
PRELIMINARY 3D SKETCH	54-55
PROTOTYPE	
DESIGN GUIDELINES	56
MATERIALS	57
LIGHTING QUALITY	58
FURNISHINGS	59
PROTOTYPE PLAN 1 AND PERSPECTIVES	60-61
PROTOTYPE PERSPECTIVES	62
PROTOTYPE SIGNAGE	63-65
PROTOTYPE FLOOR PLAN 2 AND INTERIOR ELEVATIONS	66
PROTOTYPE INTERIOR ELEVATIONS	67



# MOTHER'S ROOM



# RESEARCH

## MOTHER'S ROOM BEST PRACTICES

**Purpose** - The purpose of a mother's room in an airport is to provide nursing mothers with a safe, private space to pump breast milk or to feed their baby in peace and quiet.

**Names** - Nursing Rooms, Nurseries, Mother's Rooms and Lactation Rooms.

**Design** - In airports, mother's rooms come in a variety of styles, ranging from single occupancy, to partitioned spaces, to pods (Mamava). The pods are compact and freestanding but do not have a sink as plumbing would restrict the mobility of the pod. Mother's rooms can also have a main room that is broken up into smaller, individual rooms for more privacy.

Key elements to designing a mother's room include acoustic and security considerations. Mothers want to feel secure and safe while pumping or feeding. Therefore, ensuring that the room is only used for its main purpose is key. Sound dampening materials are used in order to create a tranquil space for mothers to pump in peace while traveling. Minimum requirements for the room include having electricity and comfortable seating.

## AIA MOTHER'S ROOMS DESIGN CONSIDERATION

Size	A minimum footprint of 7 feet by 7 feet is recommended as it allows for a 5-foot radius circle with 24-inch deep counters on two walls. Other configurations such as 10 feet by 5 feet work well, too.
Privacy	Install a user-operated deadbolt for privacy. The best locks are indicator dead bolts that display an "occupied" message to discourage interruptions.
Sound Privacy	Walls should reach up to the structure above to minimize sound transmission over them into adjacent spaces. Install sound attenuation in walls to minimize sound transmission. Install fabric panels, curtains, carpeting, or other sound-dampening materials to minimize echoes.
Chair	Provide a task chair suitable for a workstation. Fabric or material designed for easy cleaning or wiping is recommended. Seat, back, armrest, lumbar, tension, and height adjustments are preferable. Casters are also important to allow the user freedom of movement when hands are occupied with bottles of milk and pump parts. A more comfortable chair could also be placed in the room if mothers frequently use the room to breastfeed their babies.
Table/Counter	Provide a minimum 18-inch deep by 32-inch wide laminate or solid work surface at desk height for the pump and bottles to rest on in front of the chair. The surface should be easily cleaned or wiped down for the next user. Provide clear knee space beneath the counter. Electrical outlets above the work surface should be provided for the pump and accessories.
Sink	Provide a sink and faucet combination deep enough to wash bottles and pump parts. Goose neck or kitchen type faucets are recommended. If possible, locate the sink adjacent to the work area and provide towel dispenser nearby.
Lighting and HVAC	Uniform ambient light is encouraged to provide a restful and soothing environment. Task lighting should be provided over the sink and the pump area. Room temperature should be maintained year-round at a comfortably warm level such as in a dressing room. A thermostat in the room could increase user control and thermal comfort.

## PRECEDENTS- MOTHER'S ROOM

### DETROIT METROPOLITAN AIRPORT

Detroit, MI

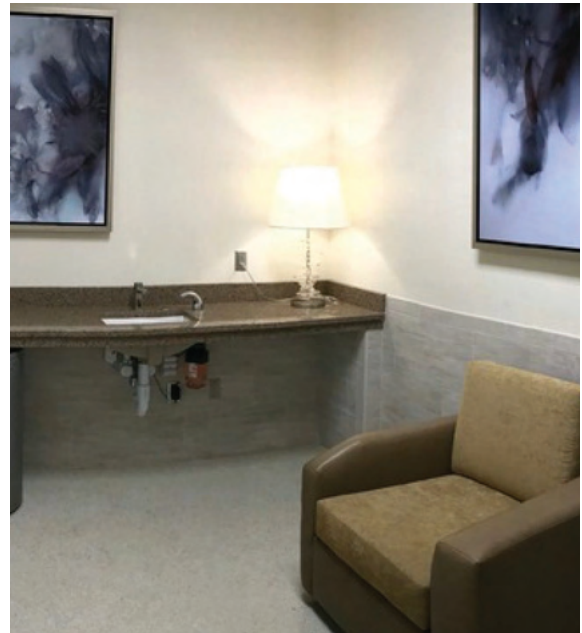
DTW Airport has a nine nursing rooms, each private, allowing for one mother to use it at a time. All nine were recently renovated within the last year.

**Location** - Post-security

**Design** - The single occupancy design guarantees the mother's privacy. When locked, the doors display 'Occupied' to avoid any disruptions.

**Space** - 150 square foot room which has a sink, comfortable seating, and both ambient and task lighting.

**Security** - Open 24 hours a day but a one-time access code is needed to enter the space. Mothers can call on their cell phone to receive the code to enter the room.



The Rooms Include Sinks and Counter space for Mothers



Curtains Over the Windows Provide Mothers with Privacy

<https://www.crainsdetroit.com/article/20180627/news/664701/detroit-metro-airport-opens-its-first-nursing-room>  
<https://www.metroairport.com/terminals/services-amenities/nursing-rooms-0>



## PRECEDENTS- MOTHER'S ROOM

### SAN FRANCISCO INTERNATIONAL AIRPORT

San Francisco, CA

SFO has a total of 13 nursing rooms spread across the three terminals. The nursing rooms provide a place for mothers to pump as well as feed and take care of their children within the hectic airport.

**Location** - Pre- and post-security in three terminals.

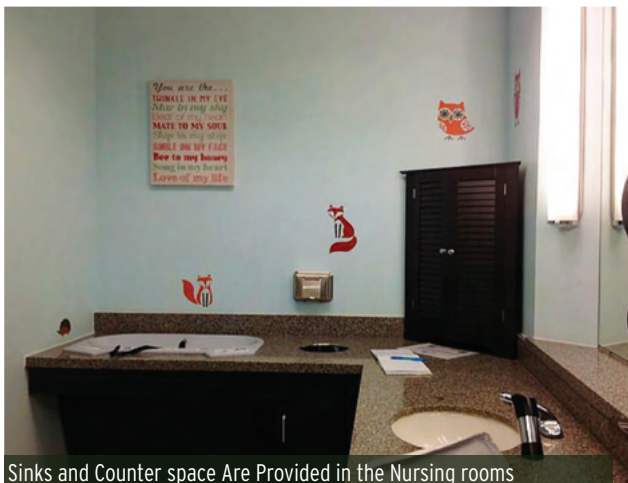
**Design** - Each room is single occupancy and spacious, allowing the necessary space for mothers to attend to their children.

**Space** - The nursing rooms provide mothers with lockable doors, sink, outlets, comfortable seating and a changing table.

**Security** - Access is requested by calling through the airport courtesy phones.



View of entrance to Nursing room, showing the courtesy phone



Sinks and Counter space Are Provided in the Nursing rooms



View of Changing Stations and Diaper Dispensers

<https://www.flysfo.com/content/nurseries-terminal-1>

<https://www.flysfo.com/content/nurseries-terminal-2>

<https://www.flysfo.com/content/nurseries-terminal-3>

[https://www.mompumphere.com/places/place/details/283\\_sfo-nursery](https://www.mompumphere.com/places/place/details/283_sfo-nursery)

## PRECEDENTS- MOTHER'S ROOM

### LOGAN OFFICE CENTER

East Boston, MA

The Logan Office Center has a mother's room, which is used predominantly for pumping due to the office setting.

**Design** - The room has two nursing chairs, one in a smaller room with a locking door, and one in the main space that can have a privacy curtain drawn around it. This allows two mothers to use the room at the same time.

**Space** - Each chair has an ottoman, a side table with a convenience outlet, and a floor lamp for task lighting. The main space has a sink area, and storage lockers.



## PRECEDENTS- MOTHER'S ROOM

### CHARLOTTE DOUGLAS INTERNATIONAL AIRPORT

Charlotte, NC

There are two Mother's Rooms at Charlotte Douglas International Airport (CLT). Each location was created to provide a peaceful space for nursing mothers who wish to nurse or pump in a private setting.

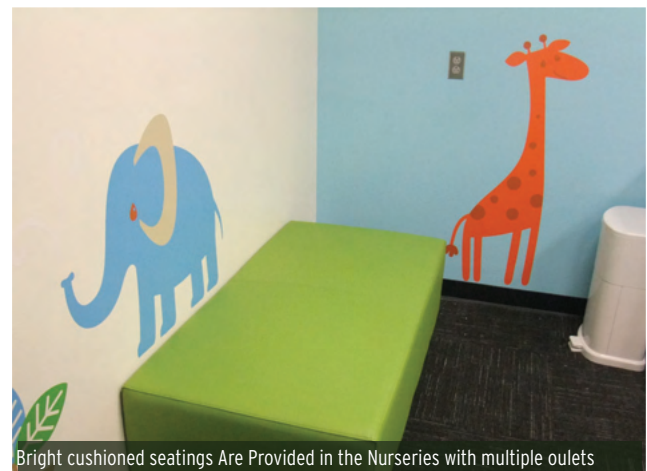
**Location** - There are 2 locations at Concourse A and Concourse D

**Design** - Each Mother's Room features private nursing stalls separated by privacy curtains allowing more than one mother to use at a given time.

**Space** - Each stall is outfitted with a cushioned chair and power outlets. The rooms also feature a diaper changing station, sink area and multiple power outlets.



Sinks and Counter space Are Provided in the Nurseries



Bright cushioned seatings Are Provided in the Nurseries with multiple outlets

<http://www.charlotteairport.com/VisitorServices/Pages/mothersroom.aspx>  
[https://www.momspumphere.com/places/place/details/283\\_sfo-nursery](https://www.momspumphere.com/places/place/details/283_sfo-nursery)



## PRECEDENTS- MOTHER'S ROOM

### JEWEL CHANGI AIRPORT

Changi, Singapore

Changi Airport has multiple Baby Care (nursing) rooms of various sizes throughout the airport.

**Location** - Multiple locations on every level from B2 to L4

**Design** - The nursing room located in L2 (pictured below) contains 4 private nursing cubicles, as well as 4-diaper changing stations and 2 sinks. The rooms have hot and cold water dispensers.

**Space** - There are 4 private nursing cubicles, with sliding doors that can be locked from the inside, each containing a comfortable linen couch, a small table and power outlets. A ledge in each cubicle can be used for placing pumping equipment. Each cubicle is spacious enough to fit a pram.



Sliding doors leading to private cubicles inside



Individual Cubicle inside the Mother's room on L2



View of Changing Stations and sinks

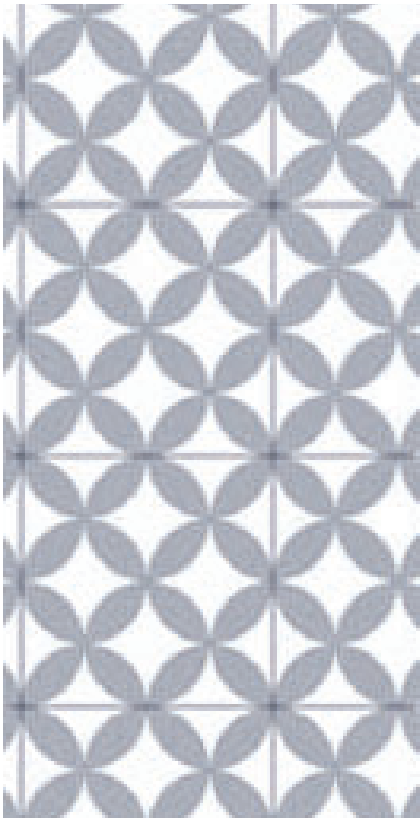
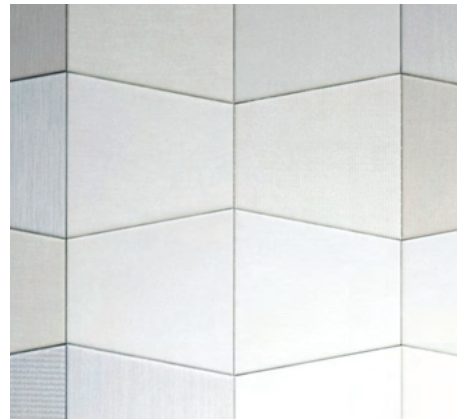
<https://www.jewelchangiairport.com/en/amenities-services.html>

<https://momorangelifestyle.blogspot.com/2019/05/parenthood-nursing-rooms-jewel-changi-airport.html>

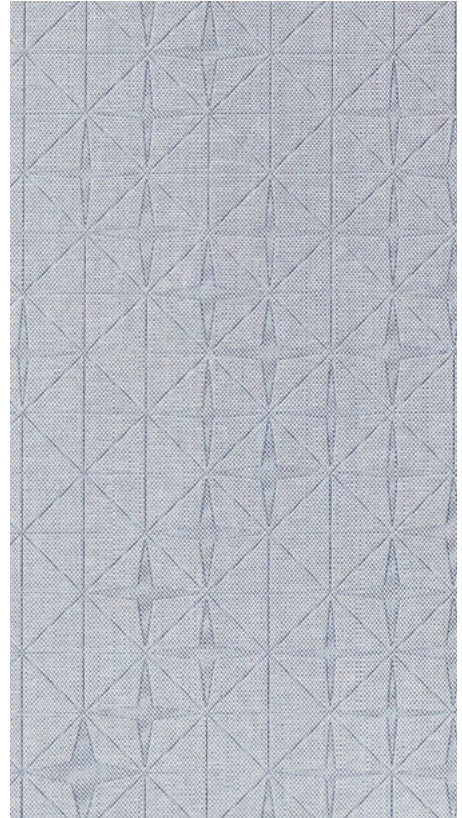
# DESIGN STUDIES



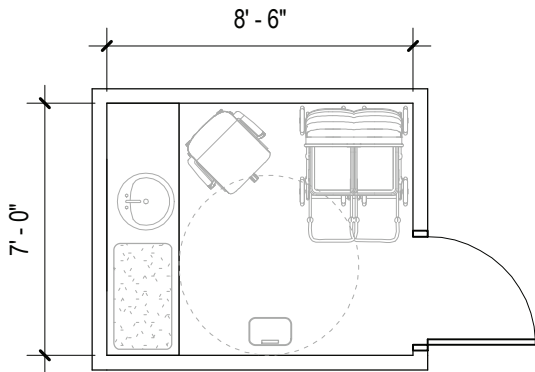
## MATERIALITY



## FLOORING





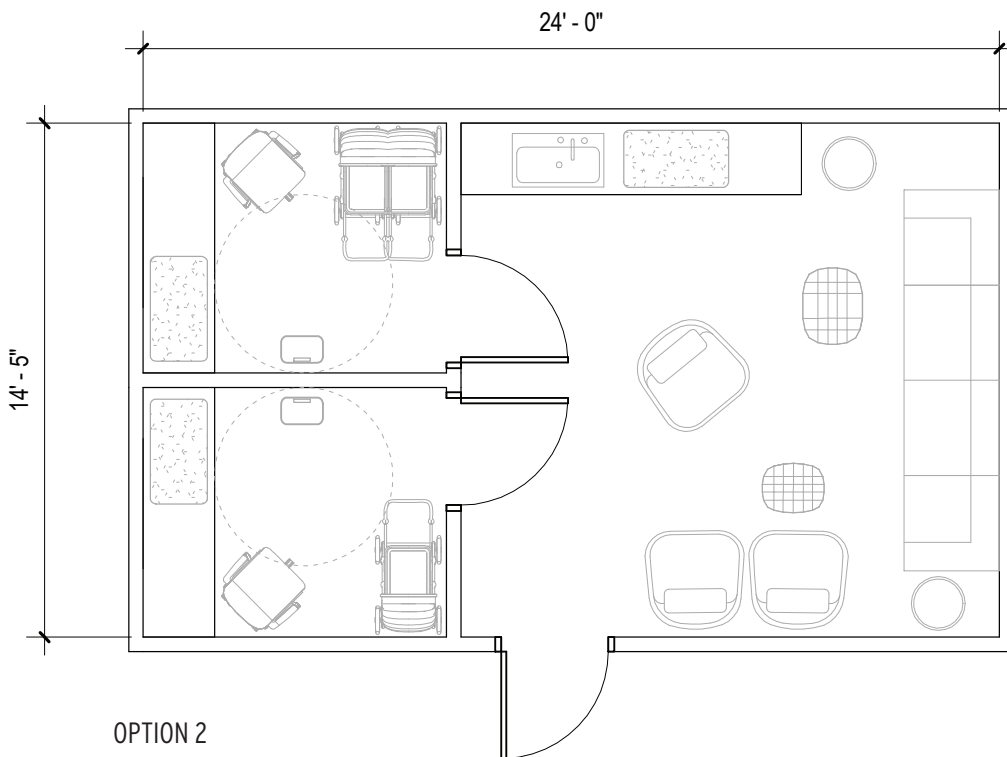


OPTION 1

Depending on the available space, there are several different configurations that could be used.

Option 1 - Single Occupancy Room

The option that takes up the least amount of space is to have one single-occupancy mother's room at each location. The room would be self-contained, with a comfortable chair, a counter with a sink and changing table, and room to park a double stroller. The benefit to this design is having the sink right in the room where pump parts might need to be cleaned.

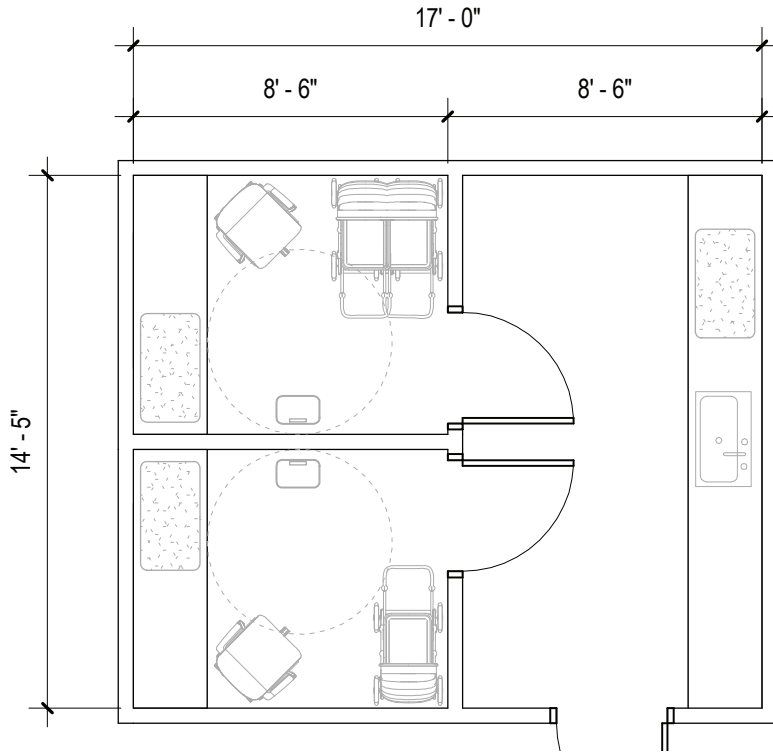


OPTION 2

Option 2 - Two Single Occupancy Rooms with Shared Lounge

This option would provide two single occupancy rooms for those requiring privacy, but would also provide a shared lounge that could accommodate additional users, or give them a place to rest while waiting for a private room. A shared sink and changing table could be located in the lounge area.





OPTION 3

**Option 3 - Two Single Occupancy Rooms with Shared Sink**

This option would provide two single occupancy rooms at each location, to cut down on waiting time. In this scenario, it would be possible to place the sink in a shared space outside of the rooms. This would cut down on the number of plumbing fixtures, but might make the cleaning process more difficult for users of the rooms.

**RENDERED IMAGE**



<https://www.aia.org/>

# PROTOTYPE



This document is intended to provide basic concepts and design recommendations for any designer tasked with designing a mother's room within Boston Logan Airport.

Massport wants passengers traveling through Boston Logan Airport to have as smooth and comfortable experience as possible. To that end, they would like to provide mother's rooms, to meet the needs of nursing or pumping mothers traveling with or without their small children.

## MOTHER'S ROOMS AT LOGAN AIRPORT SHOULD INCLUDE:

- One private room per location
- Sink with goose-neck faucet and associated counter space for washing of hands and pump parts
- Power easily available, with a convenience outlet where pump can be plugged in
- Comfortable chair that can recline/swivel for nursing or pumping
- Space for a double stroller without impeding the clearances within the room
- Space for an additional child to play
- Soothing and relaxing environment with even overhead lighting and additional task lighting where pump can be set up
- Acoustically and visually private
- Changing table with disposable liners
- Hooks on wall to hold coats, purses, and diaper bags
- Can be secured by the occupant with a signal to the exterior, to prevent disruptions

## EQUIPMENT LIST:

- Paper Towel Dispenser
- Trash Disposal
- Wall-mounted task Light
- Changing table
- Changing table liner dispenser
- Soap Dispenser
- Coat hooks
- Side table with integral power



Finishes in the mother's room should help create the inviting and comfortable environment desired in the space. Materials should be durable to stand up to heavy use and cleaning, should be sustainable, and should meet the requirements of Massport standard specifications

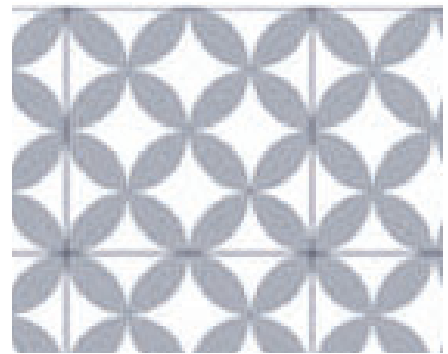
### FLOORING-

The floor should be easily cleaned, and could be tile with a stone look or terrazzo look . Another option would be linoleum or similar in a wood look.



### WALL MATERIAL-

Wall at counter with sink should be tiled. Other walls should have durable wall covering. Shaped acoustic panels with covering could also be used to attenuate sound.

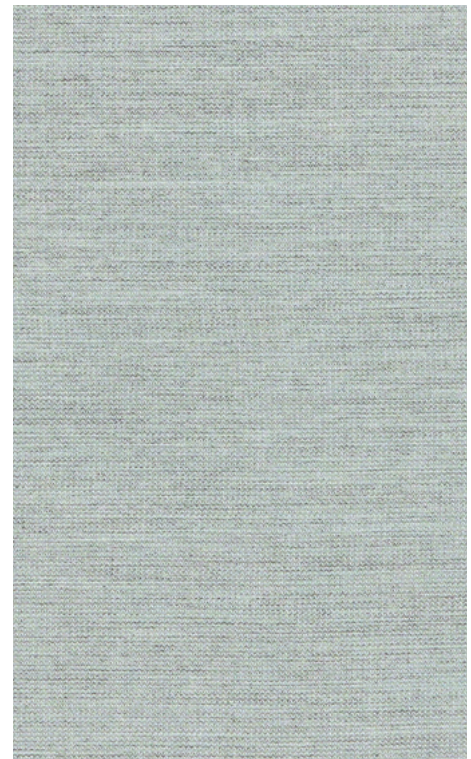




LOCATION	MATERIAL	PRODUCT DESCRIPTION	COLOR OPTIONS
<b>Walls</b>			
	Cement / Encaustic Tile	Rustico Tile RTS6- Circulos-Cement-Tiles or Equal	Gray / White
	Shaped Acoustic Panel	Carnegie Xorel Artform Shapes- Waveline or Equal	
	Covering for Acoustic Panel	Carnegie Xorel Artform Fragment Emboss or Equal	B11
	Wall Covering	Carnegie Melton 7342 or Equal	A6
	Wall Covering	Carnegie Arctic 7360 or Equal	A11
<b>Seating</b>			
	Performance Fabric	Stinson Fleck Or Equal	65410 Gull 65414 Aqua 65415 Mist 65420 Ironwood
<b>Vanity</b>			
	Quartz	Corian Quartz or Equal	Dove Grey Snow White
<b>Sink</b>			
	Vitreous china under mount sink	K-2882-0 Kohler Verticyl undermount sink or Equal	White
<b>Floor</b>			
	MDI Tile (stone look)	Inalco Petra or Equal	Crema
	Porcelain Tile (Terrazzo look)	Inalco Flourite or Equal	Blanco Plus
	Linoleum or similar (wood look)	Forbo Marmoleum Click or Equal	Trace of Nature White Cliffs

**FABRIC-**

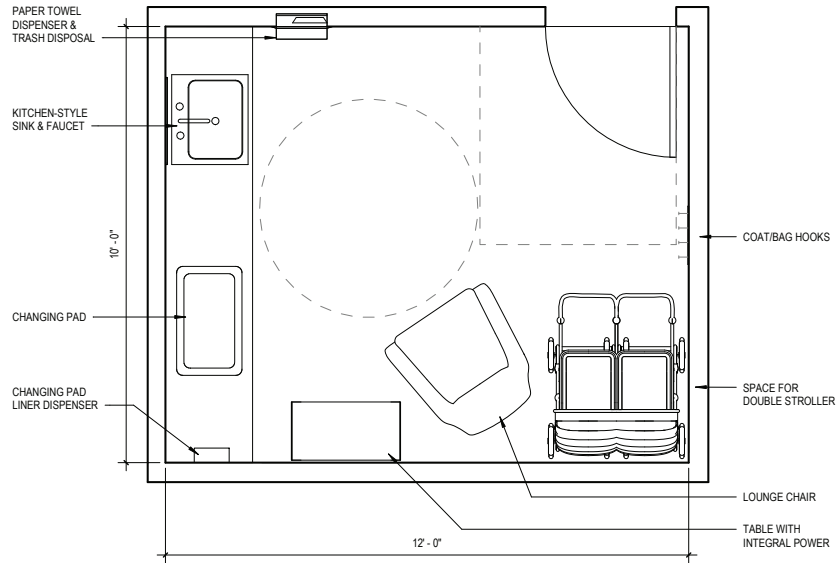
Chair should be upholstered with performance fabric that is stain and abrasion resistant



# PROTOTYPE



## FLOOR PLAN A AND PRODUCTS



Mother's Room prototype

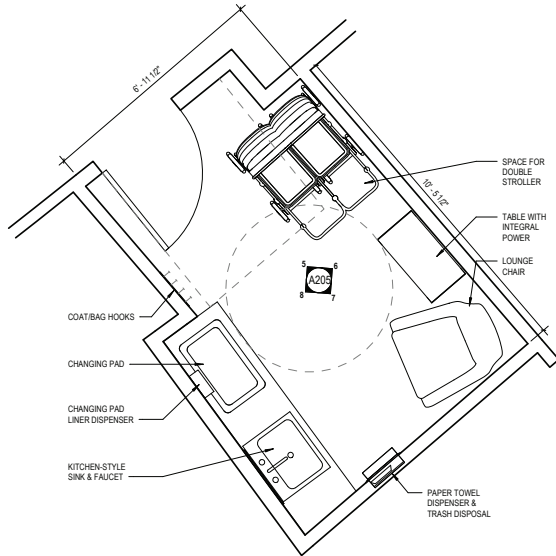
## PROTOTYPE PERSPECTIVE



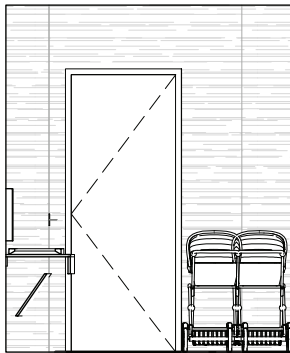
# PROTOTYPE



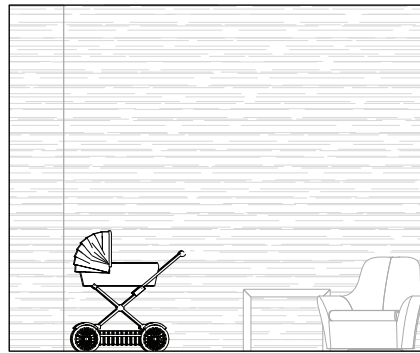
## FLOOR PLAN B



## ELEVATIONS



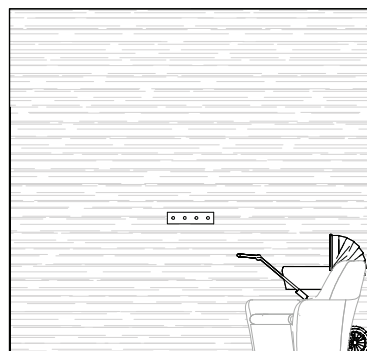
INTERIOR ELEVATION - NORTH



INTERIOR ELEVATION - EAST



INTERIOR ELEVATION - SOUTH



INTERIOR ELEVATION - WEST







# SENSORY ROOM



\*Developed in collaboration with Tanya Acosta (Sensory City)

# RESEARCH

## SENSORY ROOM BEST PRACTICES

**Purpose**- The purpose of a sensory room in an airport is to provide visitors with a secure, calming space where they can take a break and acclimate themselves to the high stress experience of traveling. It should provide a multi-sensory experience with the ability to control each sense, and provide various levels of activity for people of all ages.

**Names** - Calming room, Sensory room, Sensory space

**Design** - Sensory rooms are designed to have various interactive tactile stations that can assist with balance, stress relief, and cognitive/memory improvement. Color and lighting in these spaces play a significant role.

The room should be monitored by staff to ensure that the activity stations are being used properly. In airports, these rooms can help to calm travelers with sensory needs prior to long journeys or flights.



## RECOMMENDED ESSENTIALS FOR SENSORY ROOM

Stations	Provide various sensory experiences or stations that target 1-2 senses at a time; for example soothing music while feeling textures
Auditory: Sounds	Programmable soothing sounds and music
Visual:Lighting	Programmable light sources and light therapy. No fluorescent lighting. Color cubes, fiber optic light sources, etc. Having both artificial and natural light is desirable
Tactile:Textures	Some popular options include textured surfaces, interactive / tactile walls, squeezable objects, etc.
Furnishings	Strategic soft-play surfaces





## PRECEDENTS- SENSORY ROOM

### LONDON-GATWICK AIRPORT

United Kingdom

The sensory room in LGW is the first sensory space to open in an airport in the United Kingdom. The flexibility of the space allows for the needs of all travelers to be met while traveling through the Gatwick Airport.

**Location** - Post-security, open to all. Travelers can book 45 minute sessions at the information desk.

**Design** - The room is divided into two zones. The first zone provides travelers with a calming place with comfortable seating to relax in. The other zone features more interactive elements, such as tactile panels and games to stimulate the mind.

**Lighting** - Adjustable lighting allows for variety of environments to be created within the space.

**Accommodations** - The room can accommodate up to ninety people and provides space for child and adult passengers as well as their families and caretakers.



Light Panels Create an Interactive Activity for Children to Enjoy During Their Visit to the Airport



Adaptable Lighting Allows for the Atmosphere of the Space to Change



Soft Materials Provide Families with Safe Environments

<https://www.businesstraveller.com/business-travel/2018/10/01/gatwick-opens-sensory-room/>

<https://www.gatwick-airport-guide.co.uk/news/gatwick-is-the-first-uk-airport-to-open-sensory-room-for-passengers/>



## PRECEDENTS- SENSORY ROOM

### SHANNON AIRPORT

Ireland

SNN's sensory room is the first of its kind in Europe. The space offers travelers a relaxing, calming place away from the stress of traveling in busy airports.

**Location** - Post-security, open 24 hours a day.

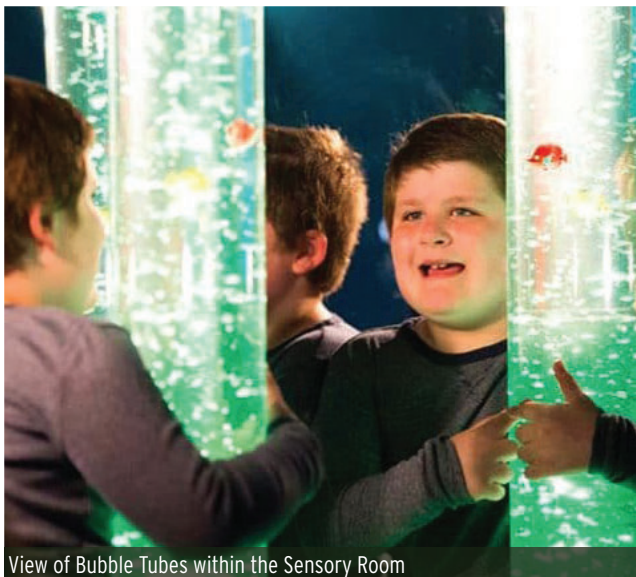
**Design** - In addition to comfortable seating cushions, there are a variety of sensory activities throughout the space. These activities include bubble tubes, a wheel projector and a wavy wall among other interactive stations.

**Lighting** - The room is dimly lit and features a variety of colorful LED lights to create different environments.

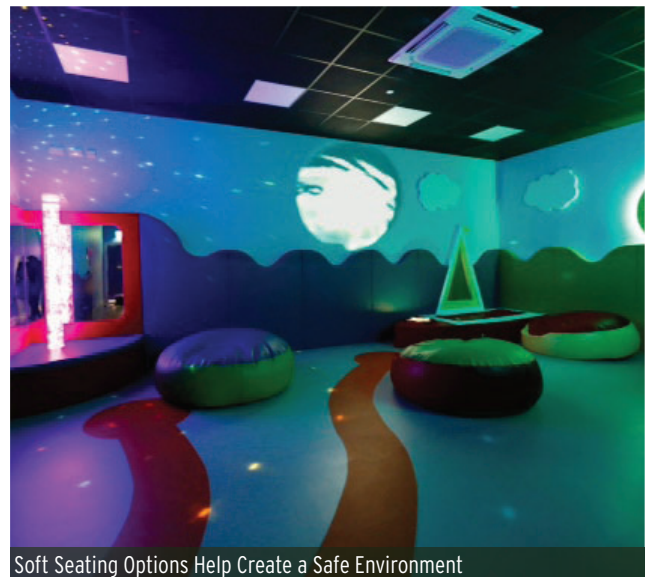
**Accommodations** - Space for child and adult passengers with neuro-developmental challenges.



Interior View of Sensory Room



View of Bubble Tubes within the Sensory Room



Soft Seating Options Help Create a Safe Environment

<https://www.babble.com/parenting/ireland-shannon-airport-sensory-room-autism/>

<https://www.futuretravelexperience.com/2017/04/shannon-airport-opens-sensory-room-for-passengers-with-additional-needs/>

## PRECEDENTS- SENSORY ROOM

### PITTSBURGH INTERNATIONAL AIRPORT- PRESLEY'S PLACE

Pittsburgh, PA

On July 23, 2019, Presley's Place opened after the idea for the sensory room was brought to CEO Christina Cassotis by Jason Rudge, who has a 4 year old with Autism. Similar rooms have had lasting impacts on his son, and he wanted to create a space that would do the same for other families.

**Location** - 1,500 square foot space is located post-security.

**Design** - Private areas and interactive activities for visitors to utilize. Includes a replica airplane in order for visitors to adjust to the feel of being on a plane. The sensory-friendly restroom includes an adult-sized changing table.

**Lighting** - The sensory room features adjustable lighting to meet the needs of visitors in the space.

**Accommodations** - Children and adult passengers.

**Architect** - Hayes Design Group (HDG), 2019.



Interior View of Presley's Place at Pittsburgh International Airport



Replica Airplane Experience within the Sensory Room



Quiet Room within the Sensory Space at PIA

<https://spark.adobe.com/page/SrW6bwMGIAFjl/>

<https://spark.adobe.com/page/hoUFNF8kFs8u6/>

<https://spark.adobe.com/page/SDRE2TawGVgJE/>

<https://mypost.com/2019/07/25/airport-sensory-room-helps-kids-with-autism-adjust-to-flying/>



# DESIGN STUDIES

## MATERIALITY AND LIGHTING



Massport wants to provide passengers with sensory issues a calm space to rest and acclimate to the busy atmosphere of the airport and the anxiety of flying before traveling.

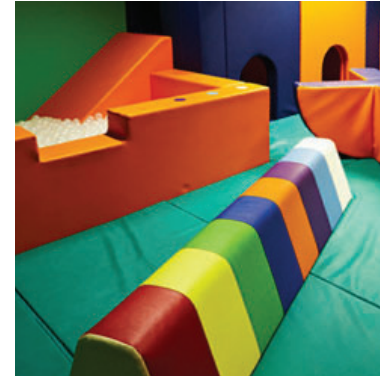
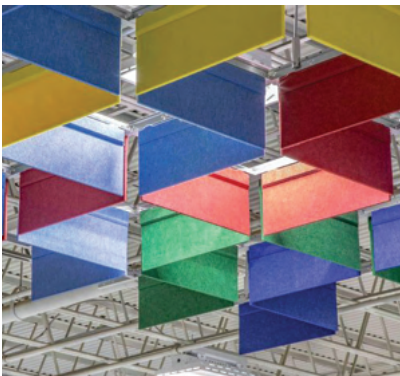
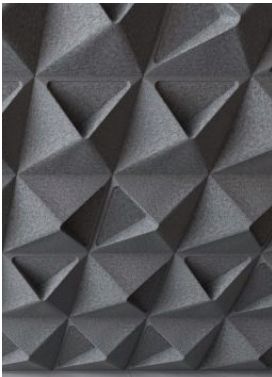
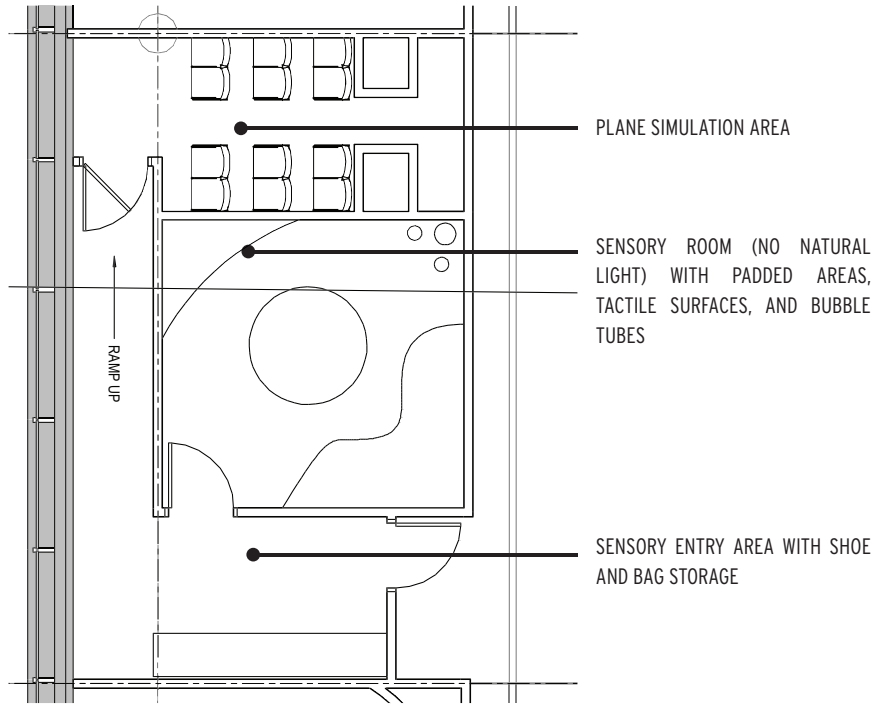
The sensory room program includes:

- One main room with an optional connected room for a plane simulation space
- Various stations that provide stimuli for at least two senses at a time
- Audio system that is programmable to play soothing music
- Lighting controls that provide various lighting levels and sources of light
- Tactile surfaces and textures that are visually interesting and squeezable
- Soft, colorful, playful furnishings
- Storage for shoes and personal belongings



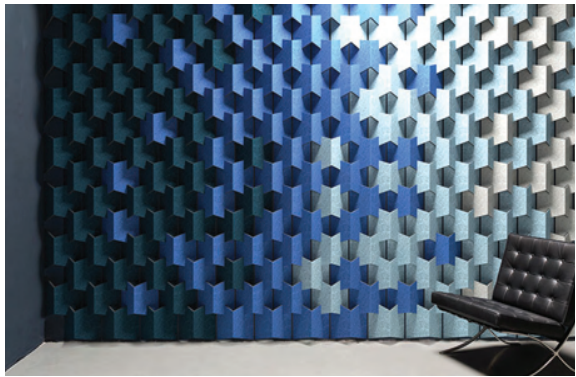
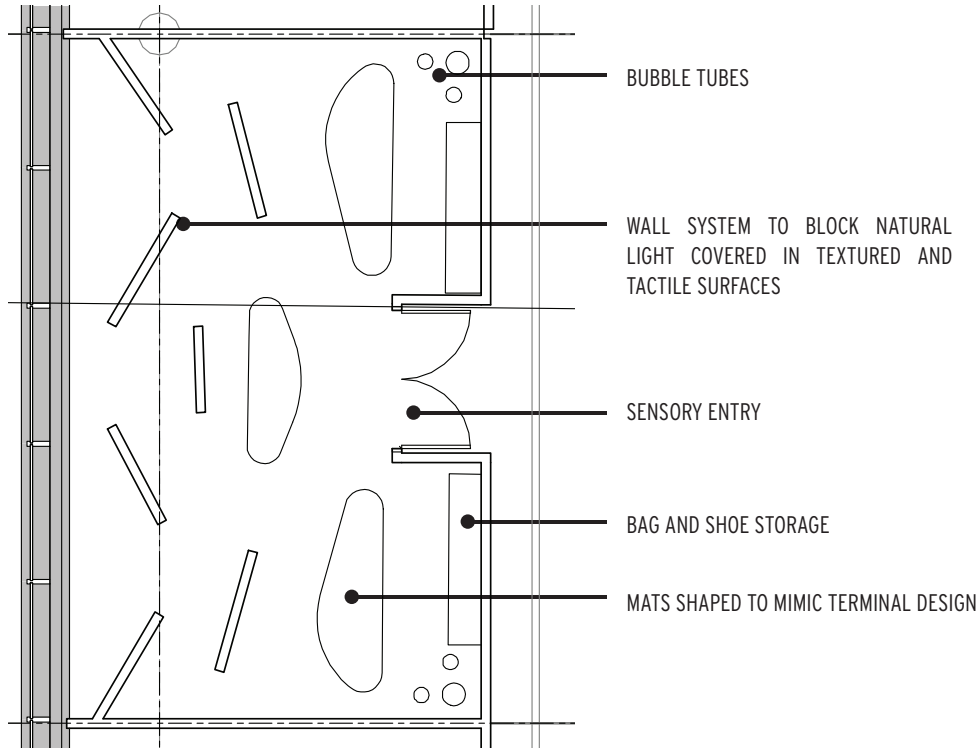
PRELIMINARY DESIGN- OPTION 1

NO NATURAL LIGHT



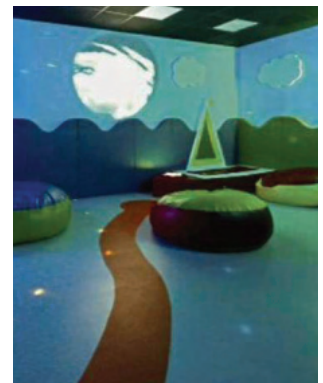
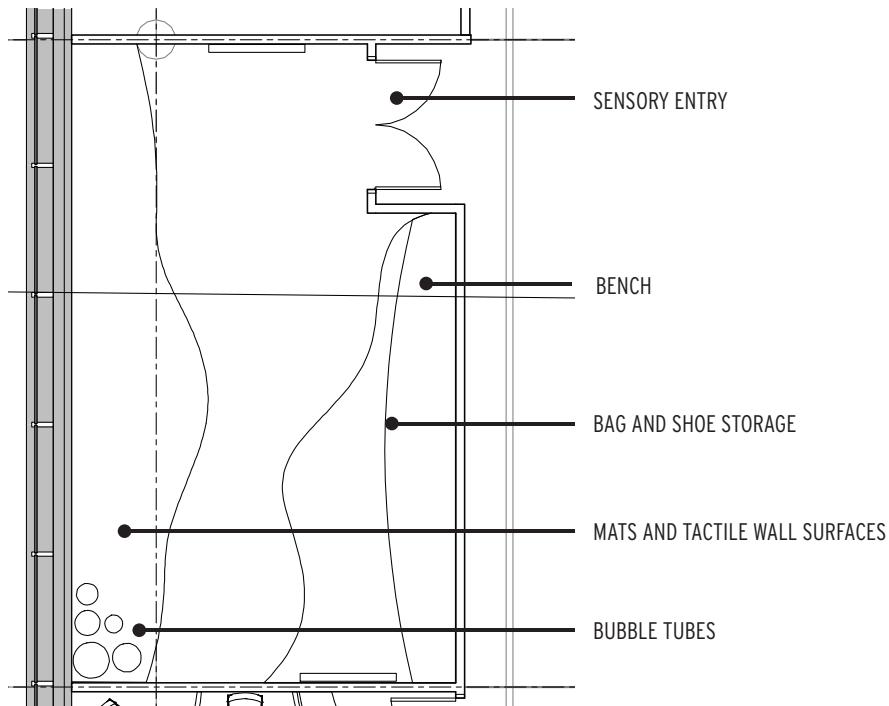
## PRELIMINARY DESIGN- OPTION 2

### PARTIALLY BLOCKED NATURAL LIGHT



PRELIMINARY DESIGN- OPTION 3

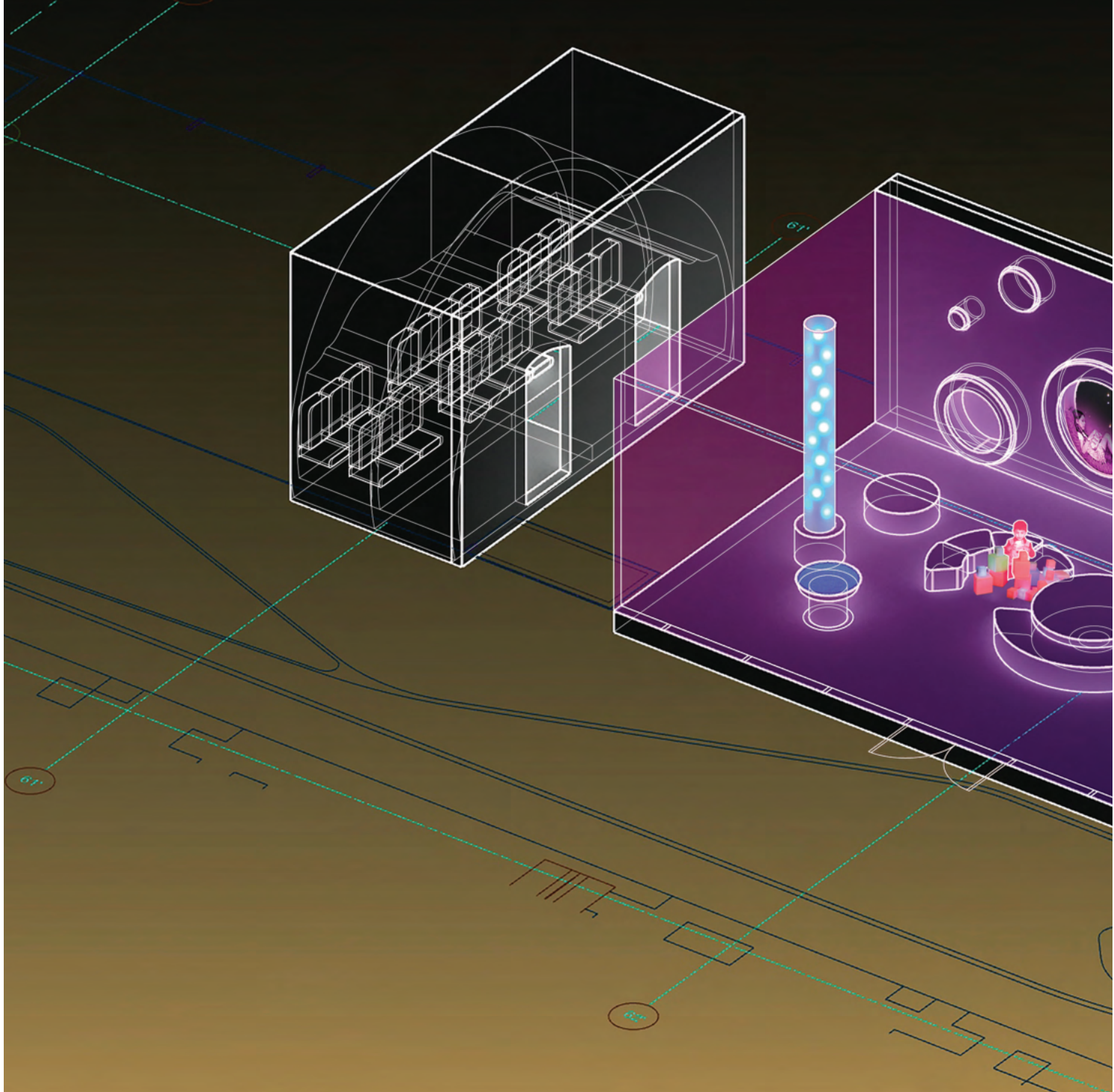
OPEN NATURAL LIGHT



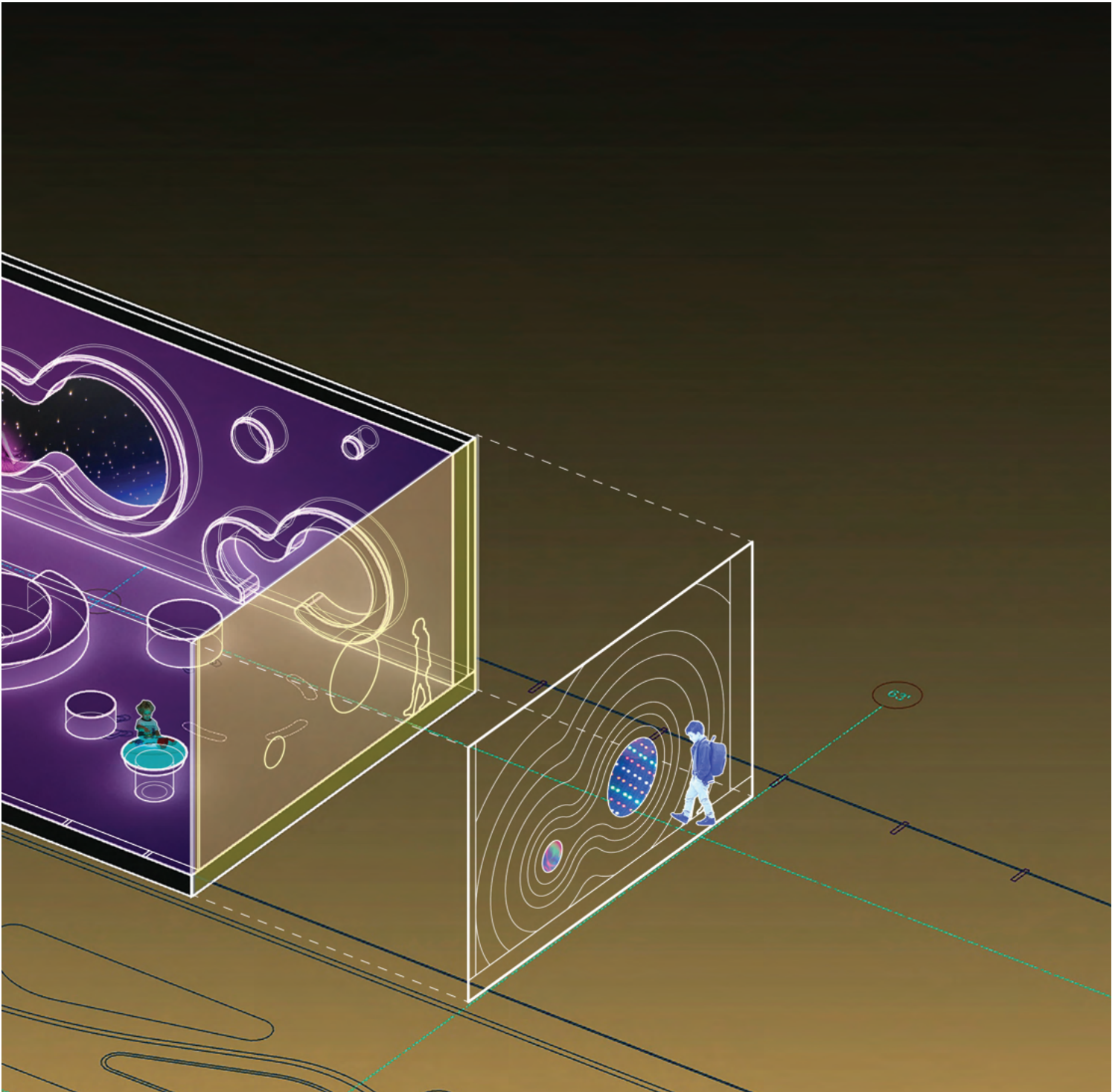


# PRELIMINARY CONCEPT

## 3D SKETCH

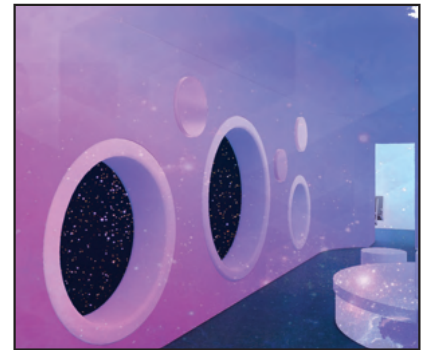
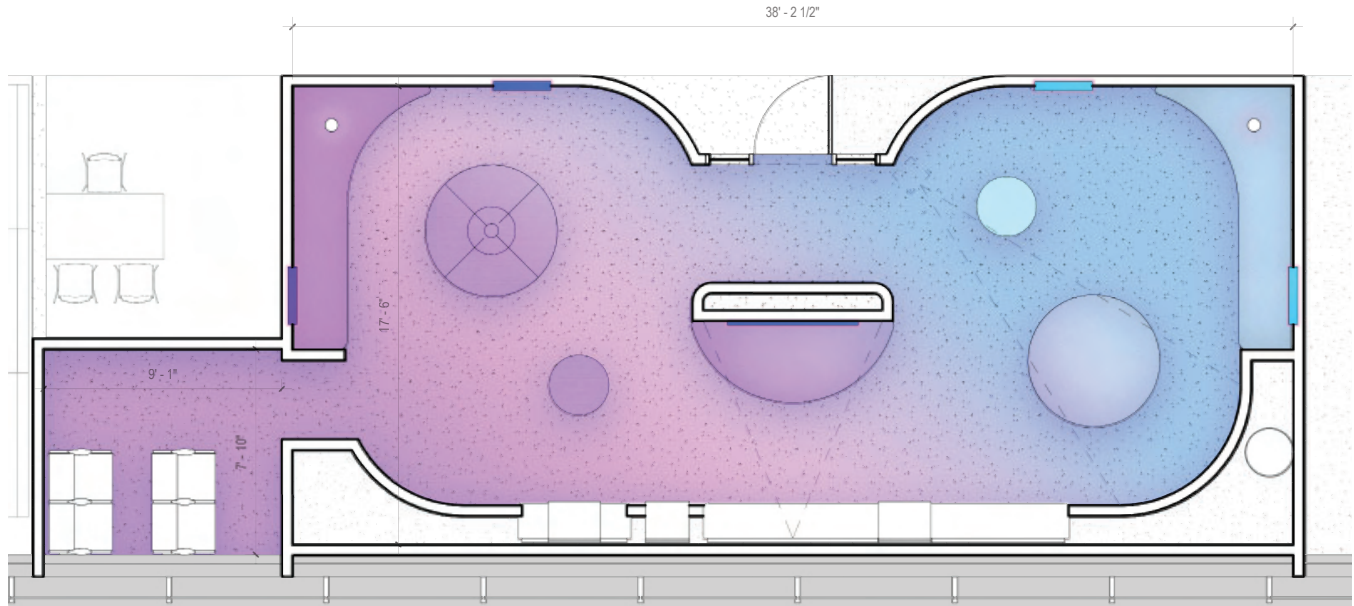






# PROTOTYPE

## FLOOR PLAN A AND PRODUCTS



The design of the sensory room aims to create various zones for different users to enjoy.

The floor plan uses round corners whenever possible to create a softer spatial quality.

All seating elements, including areas around perimeter, built-in pods and free standing pieces, are envisioned as soft seating for users to sit, lay or lounge





# PROTOTYPE

## FLOOR PLAN A AND PRODUCTS

Various interactive lighting elements are incorporated in the design. These include interactive and customizable wall panels, light tables of varying heights, light tubes and night sky LED walls as well as the possibility of projections. Fiber optics have been considered but maintenance and longevity due to high traffic use is a concern.

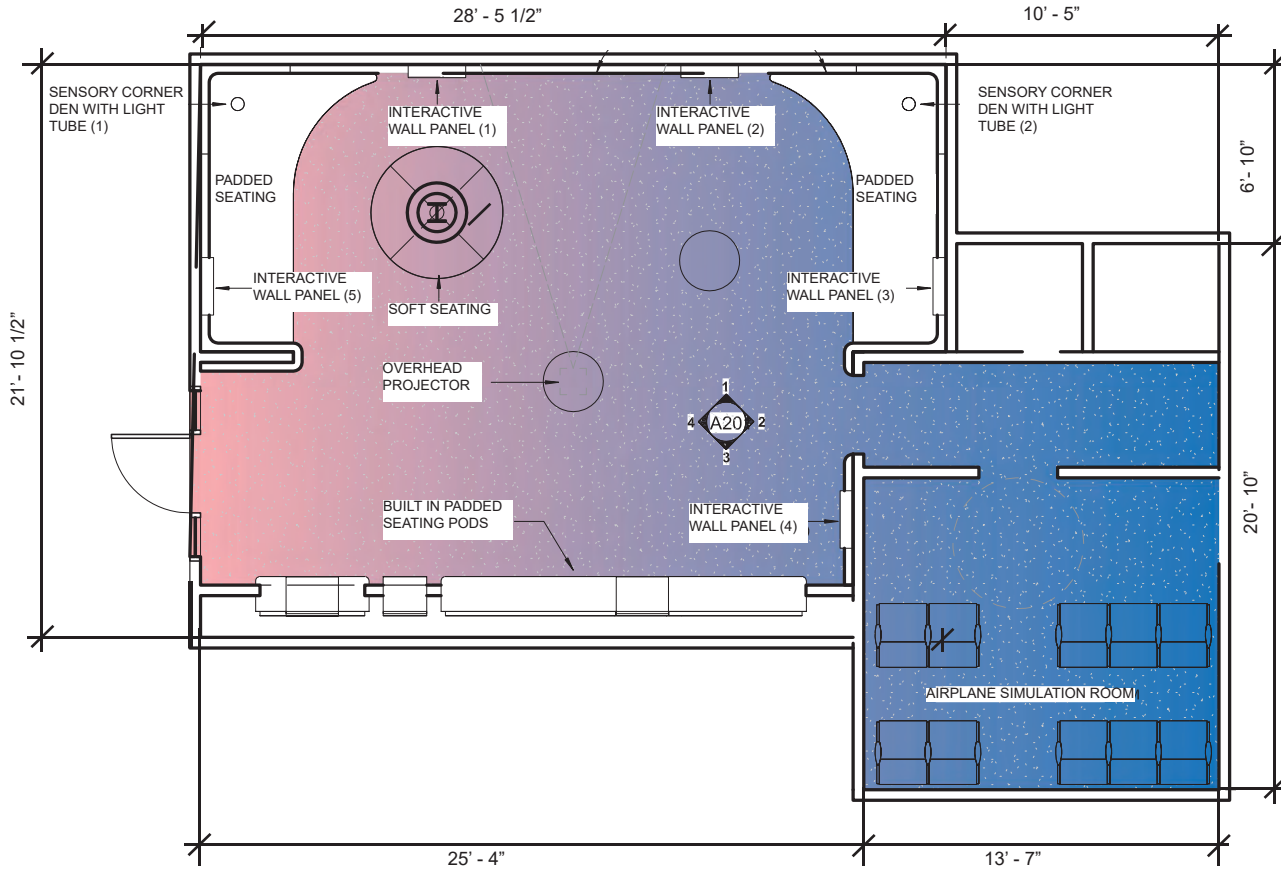


CONCEPTUAL 3D VIEW

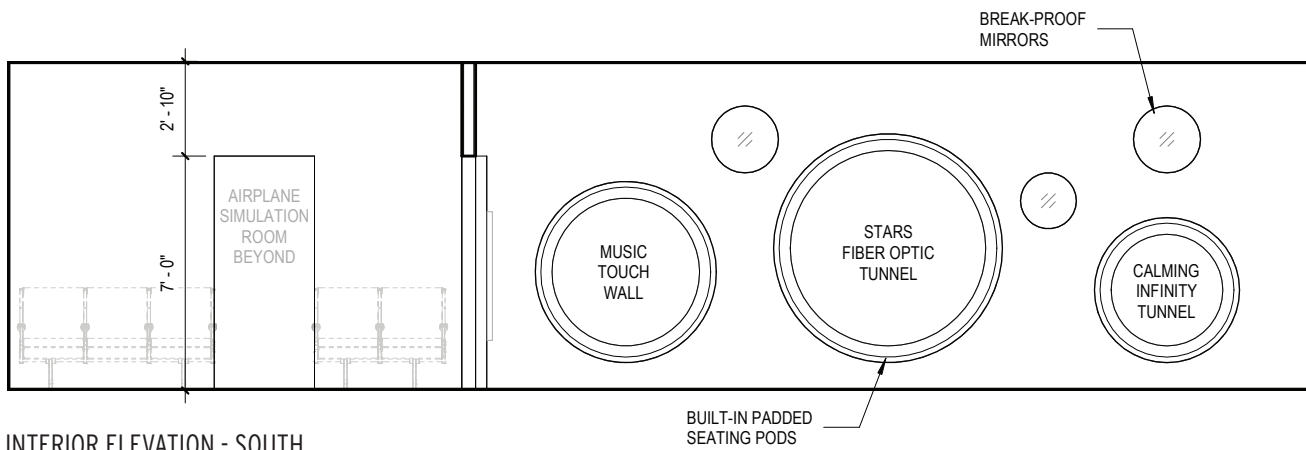


# PROTOTYPE

## FLOOR PLAN B AND ELEVATIONS



## ELEVATION PROTOTYPE B

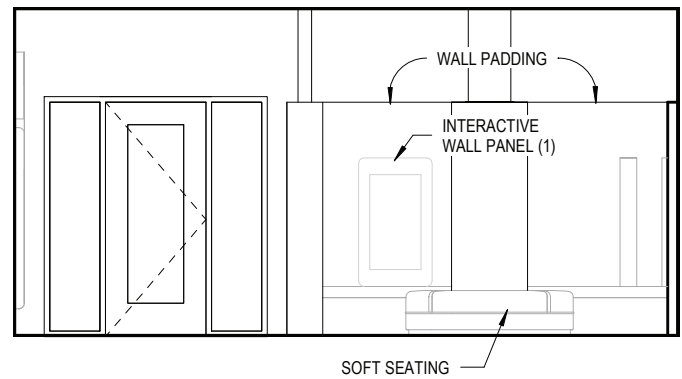
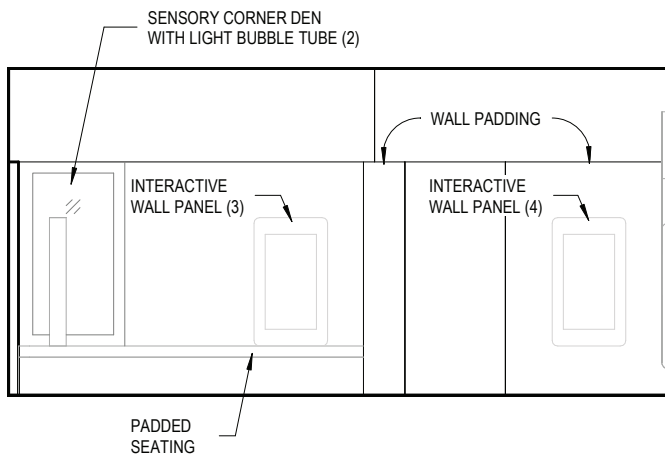
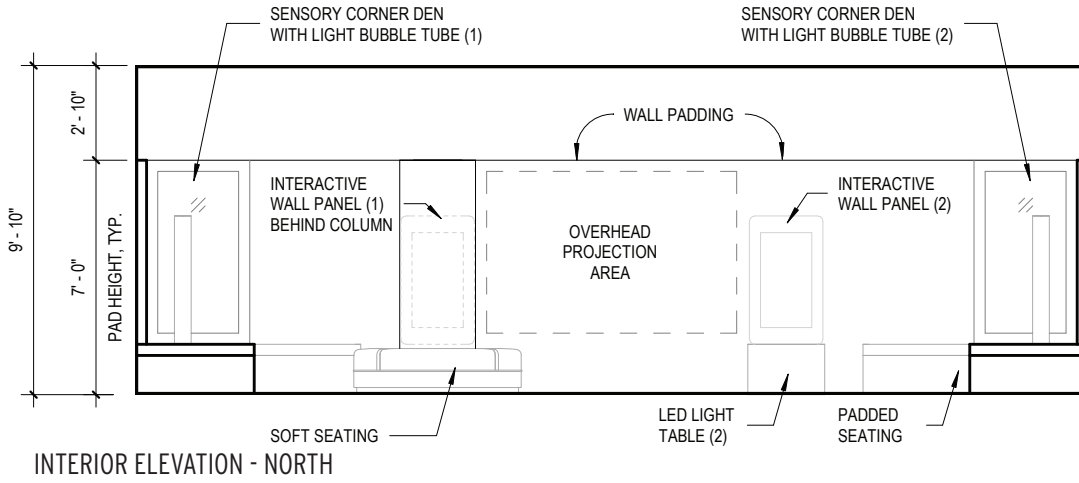


INTERIOR ELEVATION - SOUTH



# PROTOTYPE

## ELEVATIONS



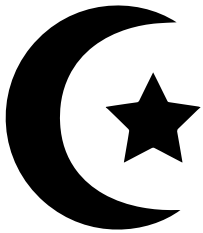


# REFLECTION ROOM



# RESEARCH

## SYMBOLOLOGY





## PRECEDENTS- REFLECTION ROOM

**Purpose** - The purpose of a meditation room in an airport is to create a quiet, tranquil space where travelers can go to reflect and reduce stress.

**Names** - Meditation room, yoga room, reflection room and calming room.

**Design** - In many airports, meditation rooms double as nondenominational spaces of worship or yoga rooms. The rooms feature natural textures and earthy tones in order to put the mind at ease. Natural light is also crucial to the atmosphere of these rooms.

Design of the rooms can be permanent rooms, or temporary partitions designating a calm environment away from the chaos of traveling. The organization of the space can range from one open room, to a large room with several smaller rooms branching off the main space. The rooms can be open 24 hours a day, or only during certain times (typically around 6 in the morning to 10 or 11 at night).



## PRECEDENTS- REFLECTION ROOM

### HONG KONG INTERNATIONAL AIRPORT

Hong Kong

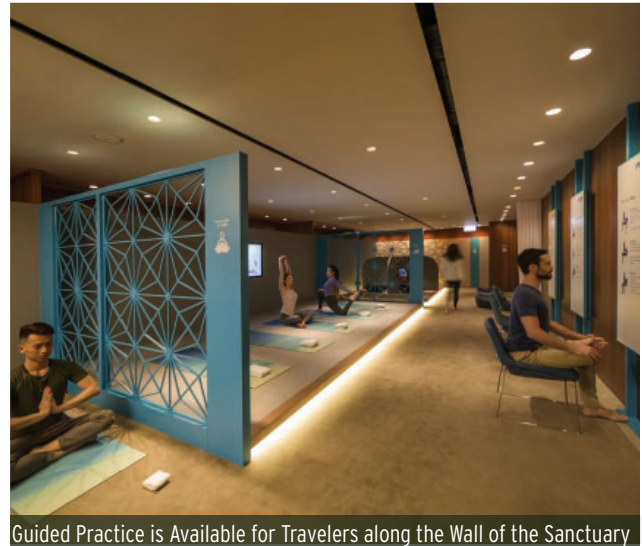
The Sanctuary, located in Cathay Pacific's main hub in Hong Kong, provides visitors with a place to ease their mind and body while traveling.

**Location** - Cathay Pacific's lounge, post-security.

**Design** - The space includes private meditation pods that allow travelers to complete private audio meditation through guided videos on iPads. Additional cushions are available, positioned near tranquil images and illustrations that create a peaceful environment.

**Space** - The 700 square foot room is divided into two separate spaces. The focus of each space being the body (through yoga) and the mind (through meditation).

**Miscellaneous** - The yoga portion of the space includes private places for individual yoga. There are also tutorials for practicing yoga and mindfulness.



Guided Practice is Available for Travelers along the Wall of the Sanctuary



Body Space Providing Travelers with a Place to do Yoga



Private Mind Space for Individual Meditation

<https://news.cathaypacific.com/stretch-relax-and-rejuvenate-cathay-pacific-opens-the-sanctuary-by-pure-yoga-211578>

<https://news.cathaypacific.com/stretch-relax-and-rejuvenate-cathay-pacific-opens->

## PRECEDENTS- REFLECTION ROOM

### SCHIPHOL INTERNATIONAL AIRPORT

Amsterdam, Netherlands

Schiphol Airport's Meditation Center offers visitors a place to reflect, pray and meditate during their travels. Staff is on hand to talk to any travelers who come through the center.

**Location** - Post-security, open 24 hours a day.

**Design** - The walls feature symbols of all religions in order to establish a sense of inclusiveness within the center.

**Space** - The center is divided into three separate rooms in order to provide travelers with different opportunities. There is a space for individual prayer and meditation, as well as gathering rooms for groups or meetings with staff members and reading rooms with different books and magazines on spirituality.

**Miscellaneous** - Church services are held weekly at 11 in the morning while services for various other denominations rotate through the center.

**Architect** - Gerard van der Veer, 2018.



Interior View Showing the Openness of the Meditation



Religious Symbology on Glass Wall of Meditation Space



Compass on the Floor Denoting the Cardinal Directions for Prayer

<https://www.schiphol.nl/en/at-schiphol/relax-and-enjoy/meditation-centre#time-details>

<https://www.aam-schiphol.nl/index.php/en/meditation-centre>



## PRECEDENTS- REFLECTION ROOM

### MULTI FAITH SPACE AT WESTFIELD STRATFORD CITY

London, England

The Multi Faith Space at Westfield Stratford City Shopping Centre provides customers and employees of all faiths a quiet place to pray and reflect while shopping.

**Location** - The space is located on the second floor of the shopping center. It is staffed daily from 11 am to 7 pm (closes at 5 pm on Sundays).

**Design** - The multi faith space is flexible in order to adapt to all faiths who may need the room.

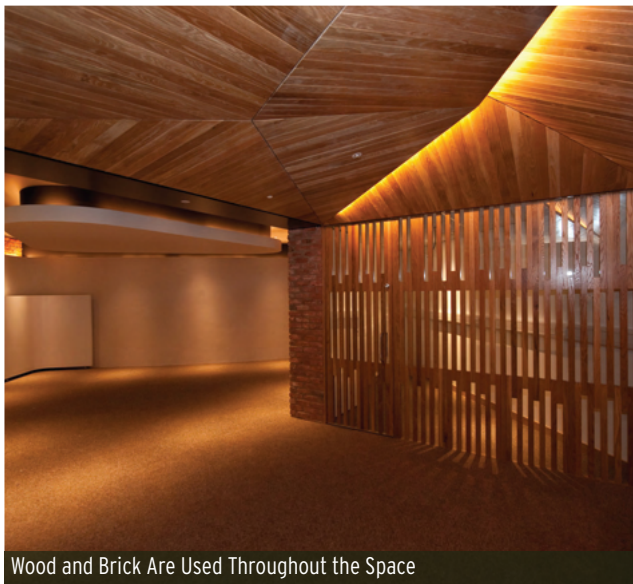
**Space** - The space is divided into two rooms, a large room for religious services and a smaller area for private prayer.

**Miscellaneous** - Christian and Muslim services are held weekly within the space.

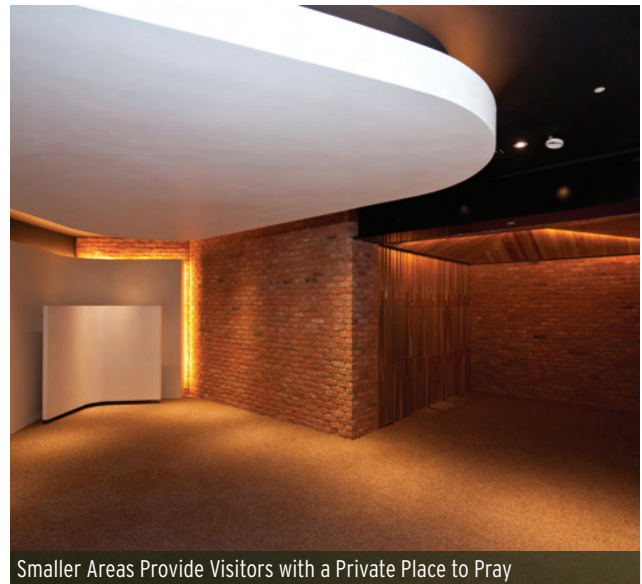
**Architect** - WAM Design, 2011.



Interior View of the Multi Faith Space



Wood and Brick Are Used Throughout the Space



Smaller Areas Provide Visitors with a Private Place to Pray

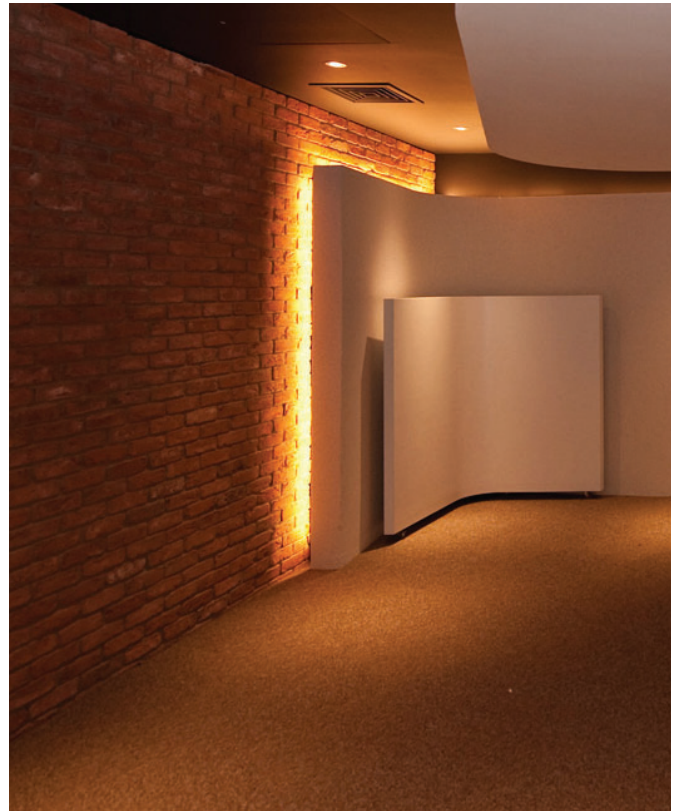
<http://wam.design/portfolio/multi-faith-space-westfield-stratford-city-uk/>

<https://uk.westfield.com/stratfordcity/services/all-services/multi-faith-prayer->



# DESIGN STUDIES

## MATERIAL AND LIGHTING



The creation of a reflection space within the terminal will allow passengers a dedicated place to care for their minds, bodies, and spirits during their travel. The space will allow them to step out of the brightness and bustle of the airport into an atmosphere of calm, where they will be able to refresh themselves in a variety of ways, including prayer, meditation, yoga, or other spiritual practices. The space should include multiple types of spaces, furniture, and lighting conditions, to allow individuals to find a space suited to their specific needs.

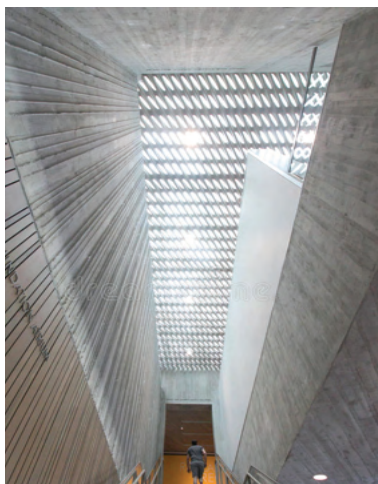
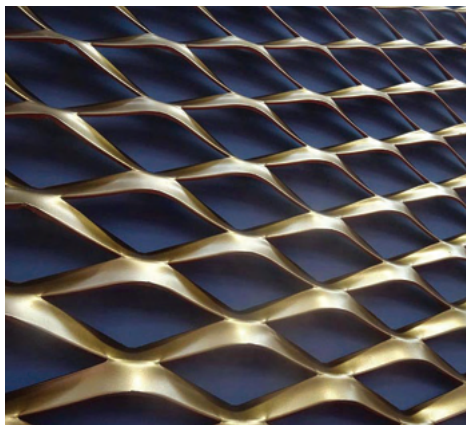
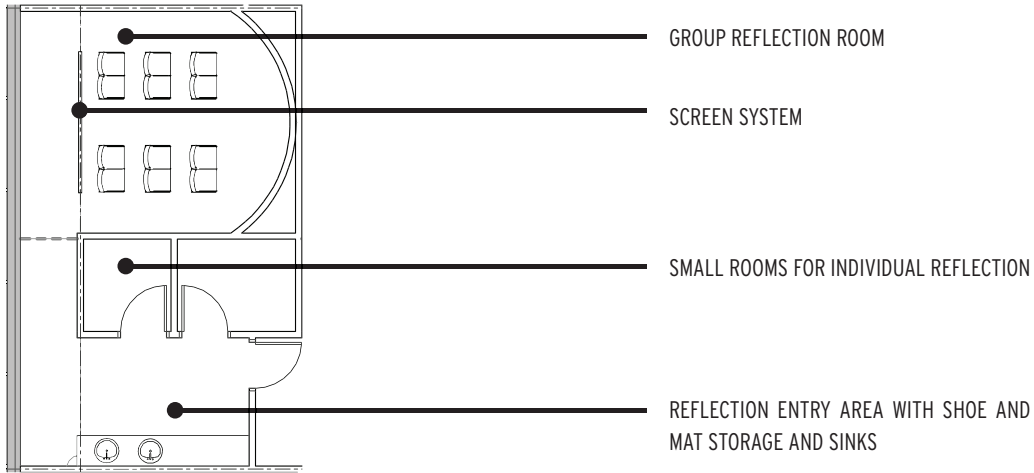
The program includes:

- Gathering space for reflection, meditation, prayer, yoga
- Seating for occupants
- Mats for occupants
- Private spaces for individuals reflecting by themselves
- Storage for shoes and mats
- Decor and lighting to emphasize the calmness of the environment
- Shade and glare control depending on the amount of natural light in the space



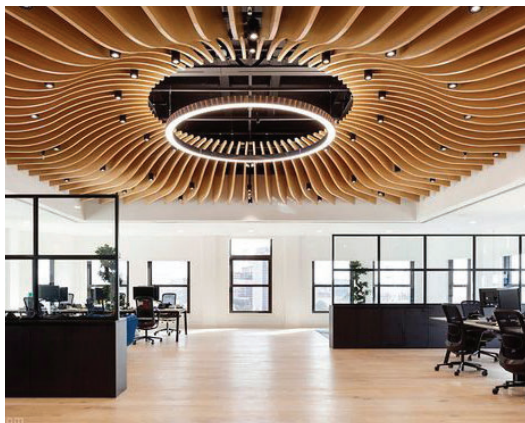
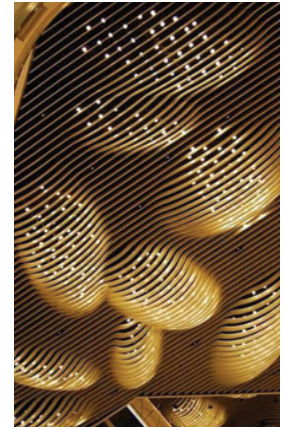
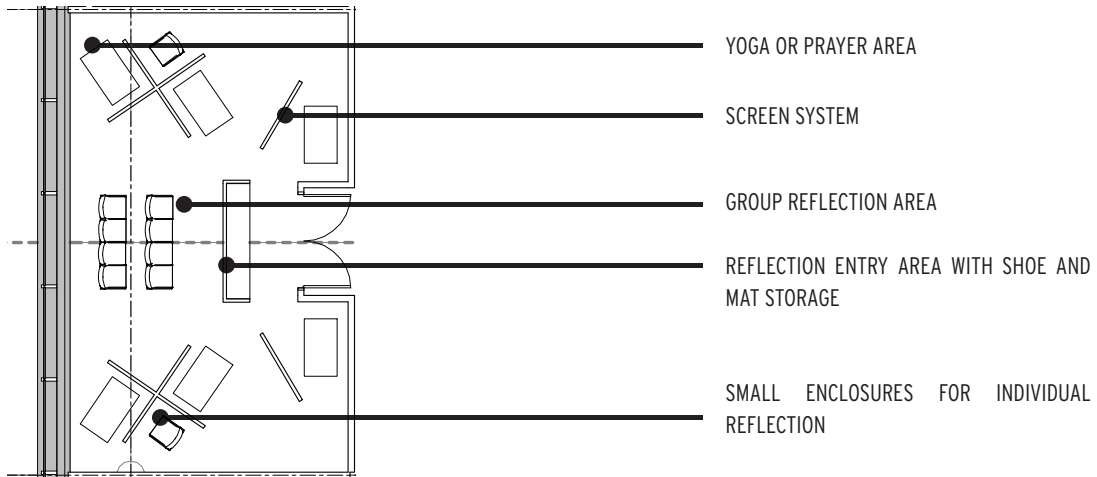
# PRELIMINARY DESIGN- OPTION 1

LIMITED NATURAL LIGHT



PRELIMINARY DESIGN- OPTION 2

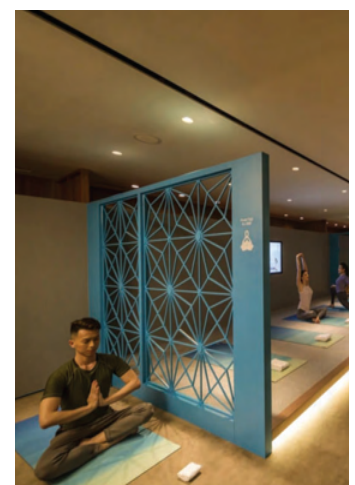
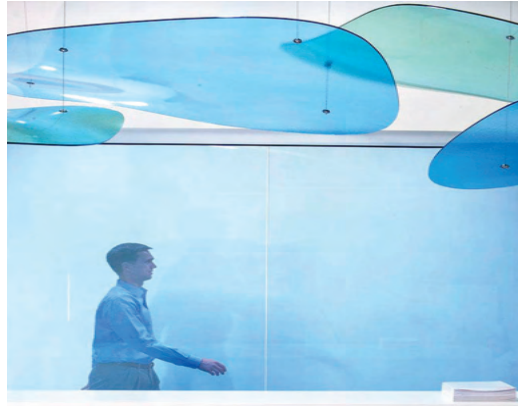
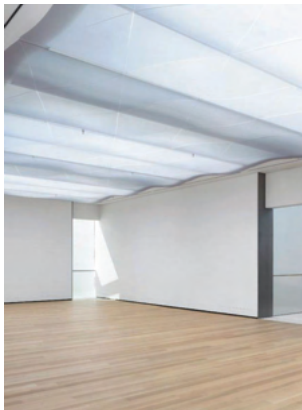
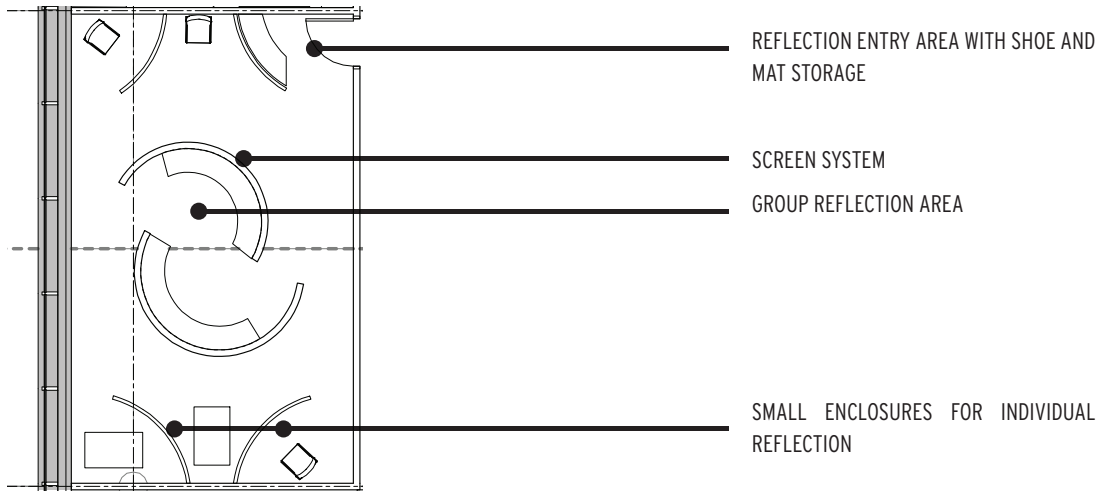
PARTIALLY BLOCKED NATURAL LIGHT





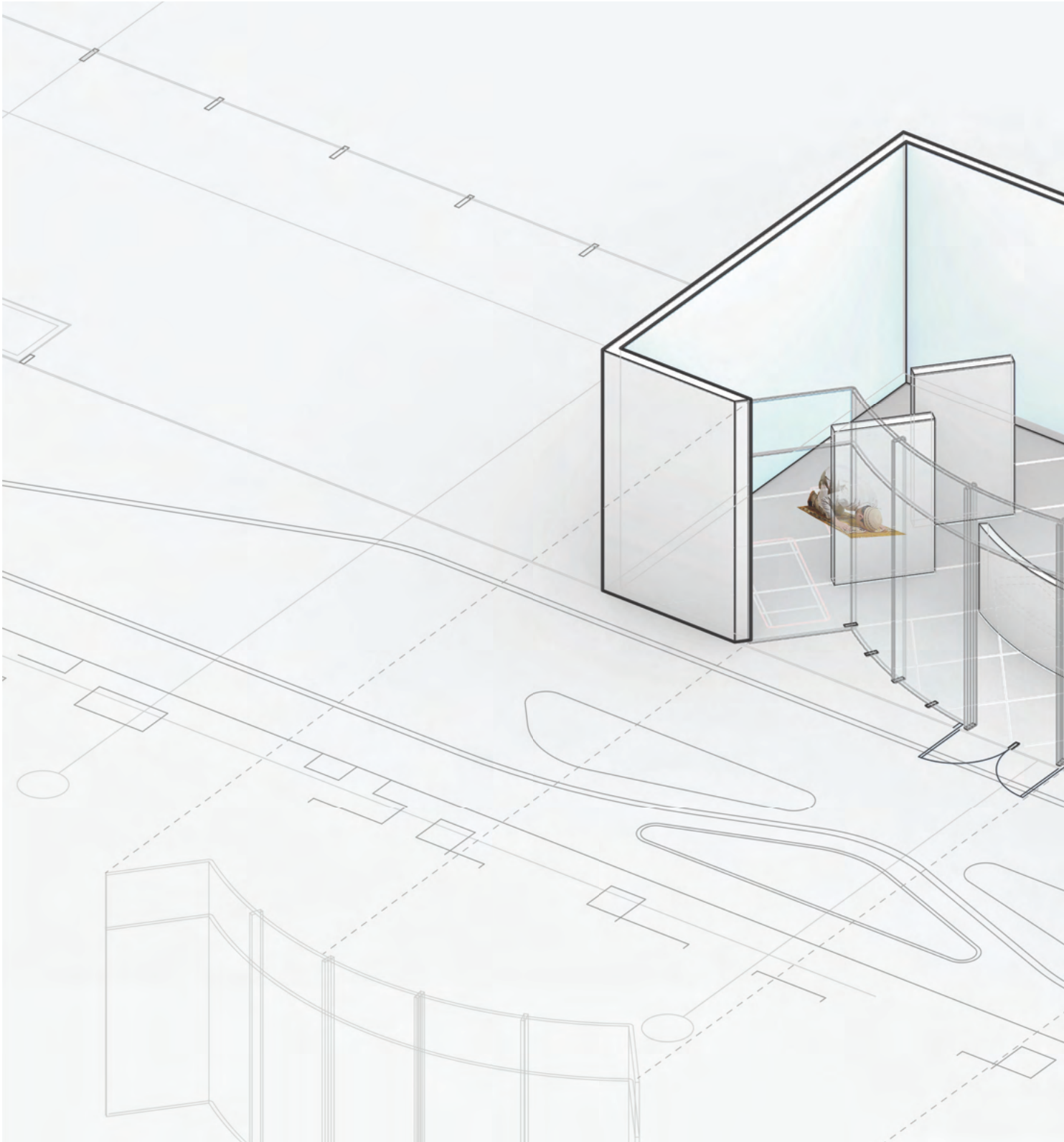
# PRELIMINARY DESIGN- OPTION 3

## OPEN NATURAL LIGHT



EARLY CONCEPT

PRELIMINARY 3D DIAGRAM





# PROTOTYPE

## REFLECTION ROOM DESIGN GUIDELINES

This document is intended to provide basic concepts and design recommendations for any designer tasked with designing a reflection room within Boston Logan Airport.

The creation of a reflection space within the terminal will allow passengers a dedicated place to care for their minds, bodies, and spirits during their travel. The space will allow them to step out of the brightness and bustle of the airport into an atmosphere of calm, where they will be able to refresh themselves in a variety of ways, including prayer, meditation, yoga, or other spiritual practices. The space should include multiple types of spaces, furniture, and lighting conditions, to allow individuals to find a space suited to their specific needs.

### REFLECTION ROOMS AT LOGAN AIRPORT SHOULD INCLUDE:

- Gathering space for reflection, meditation, prayer, yoga, or quiet contemplation
- Comfortable seating for occupants
- Mats should be available for occupants
- Private spaces for individuals reflecting by themselves
- Areas where a small group could gather together
- Storage for shoes and mats
- Decor and lighting to emphasize the calmness of the environment
- Shade and glare control depending on the amount of natural light in the space
- Signage to explain the purpose of the room and expectations for the behavior of people using the room



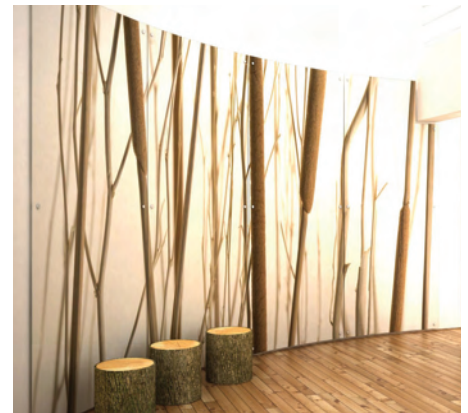
Finishes in the reflection room should help create the inviting and peaceful environment desired in the space. Materials should be durable to stand up to heavy use and cleaning, should be sustainable, and should meet the requirements of Massport standard specifications

**FLOORING-**

The floor should respond to the radial pattern of the space, and have a warm, natural feel. Wood is preferred. Avoid terrazzo or other cold, hard surfaces as people may be using mats on the floor.

**WALL MATERIAL-**

3 form wall panels with a pattern from nature that can be lit from behind should cover the lower portion of the walls.

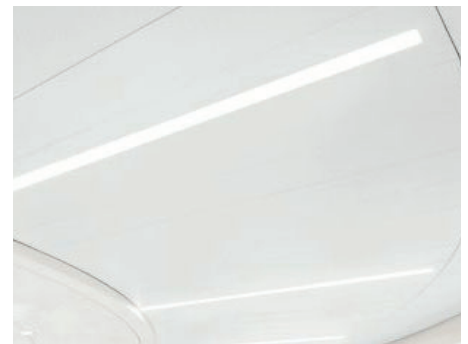


Paint that complements the design should be used between the 3 form panels and the ceiling plane.

If the reflection room location includes glass between the concourse and the room provide film on the glass to match the 3 form panels.

**CEILINGS-**

The ceiling should also respond to the radial pattern of the space, and be light colored. White acoustical material or light colored wood could be used.

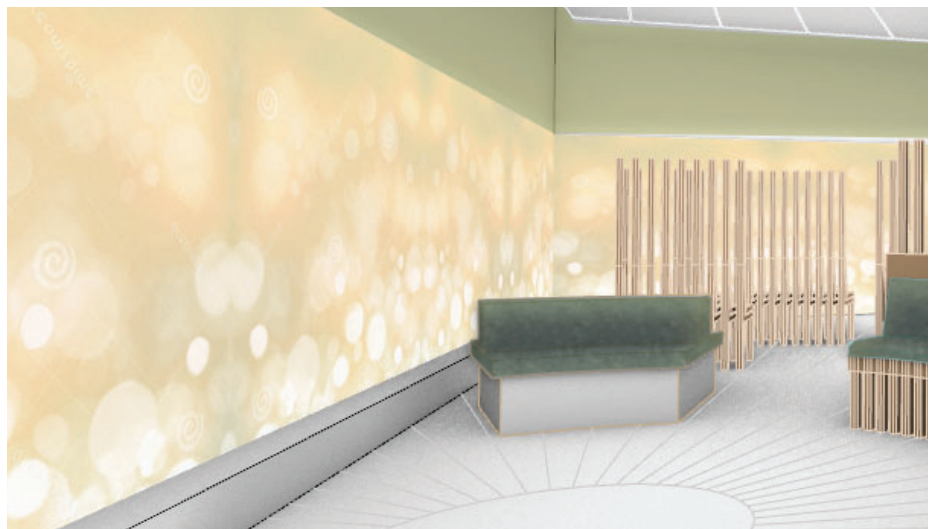


## LIGHTING QUALITY

Lighting in the reflection room should create a calm environment, and should be comfortable and glare free. Lighting should meet the code for light level, but differ in quality from the main concourse. Lighting should be indirect except for accent fixtures, and be warm colored LED.

### WALL LIGHTING-

Lighting behind 3 Form wall panels should create an ambient glow in the space. Fixture placement should be designed in such a way that lights can be replaced without removing the panels entirely.



### OVERHEAD-

An accent light overhead should provide visual interest and highlight the circular feature of the design.



### AMBIENT-

Additional lighting can be provided with recessed ceiling fixtures or cove lighting

## FURNISHINGS

The furnishings and accessories in the reflection room should continue to bring a sense of warmth to the space, with warm materials and soft textures.

### BENCHES-

Benches should be custom designed to fit the circular design of the space, and incorporate soft seating surfaces, and wood screening elements. In some locations screens may occur without benches and vice versa.

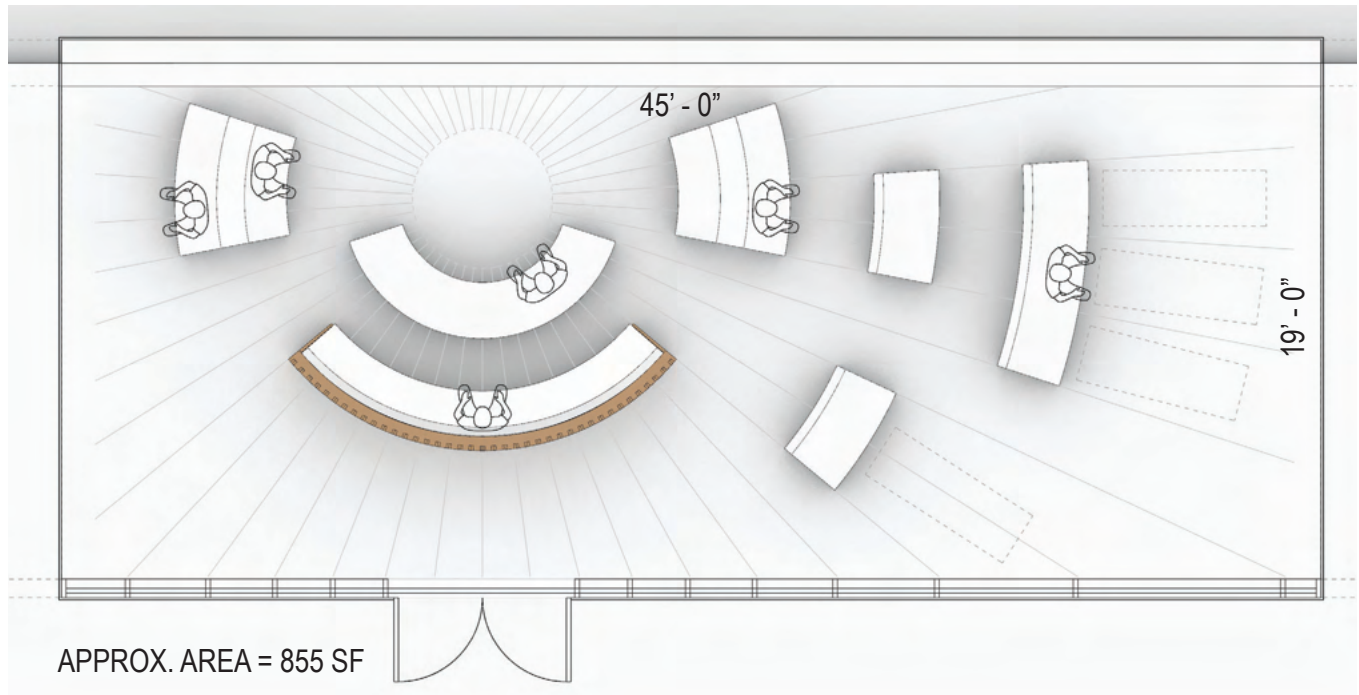


### STORAGE-

Storage should be provided for prayer mats and yoga mats that will be provided in the space. Mat storage may be incorporated into the bench/screen design. Space should also be provided for people using the space for prayer to remove and stow their shoes if desired. All storage solutions should be considered with security in mind, so there are not fully enclosed spaces where something could be hidden.

# PROTOTYPE

## FLOOR PLAN 1



## PROTOTYPE PERSPECTIVE





# PROTOTYPE

## PROTOTYPE PERSPECTIVE



## PROTOTYPE PERSPECTIVE



# PROTOTYPE



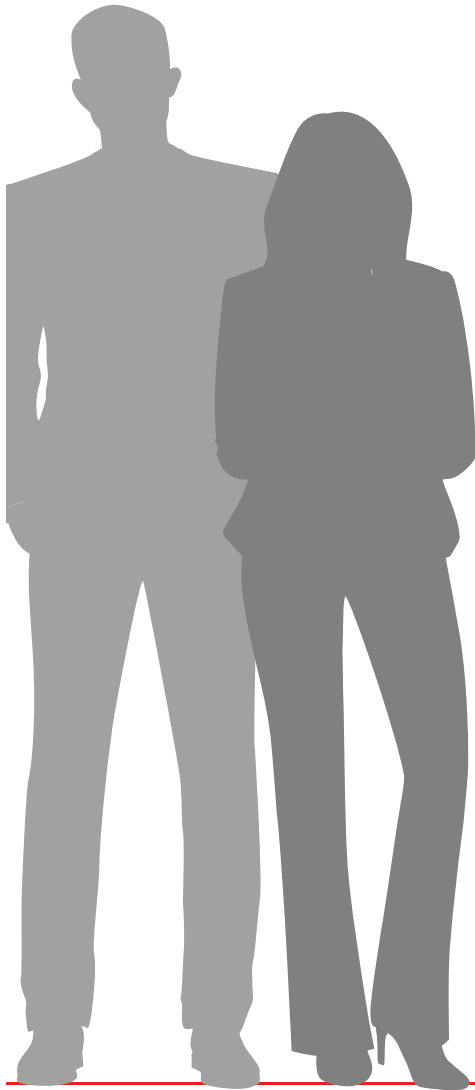
## PROTOTYPE PERSPECTIVE



# PROTOTYPE



## PROTOTYPE SIGNAGE (CONCEPTUAL)



**Reflection Room**

This room is a shared space for individuals or groups for all prayer, devotions, meditation, reflection, silent thought, or any spiritual activity in tranquil surroundings.

Available to all without regard to age, race, gender identity, sexual orientation, ability, class, ethnicity, or cultural background.

☸ + ✚ ✨ ✨ ☾

*Please respect this space and those who use it by leaving it clean and tidy.*

**Reflection Room**

☸ + ✚ ✨ ✨ ☾

This room is a shared space for individuals or groups for all prayer, devotions, meditation, reflection, silent thought, or any spiritual activity in tranquil surroundings.

Available to all without regard to age, race, gender identity, sexual orientation, ability, class, ethnicity, or cultural background.


*Please respect this space and those who use it by leaving it clean and tidy.*

**Reflection Room**

☸ + ✚ ✨ ✨ ☾

This room is a shared space for individuals or groups for all prayer, devotions, meditation, reflection, silent thought, or any spiritual activity in tranquil surroundings.

Available to all without regard to age, race, gender identity, sexual orientation, ability, class, ethnicity, or cultural background.

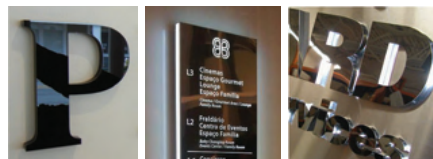


*Please respect this space and those who use it by leaving it clean and tidy.*

12"

35"

high gloss/mirrorlike finish material



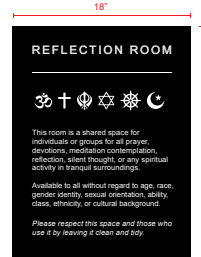
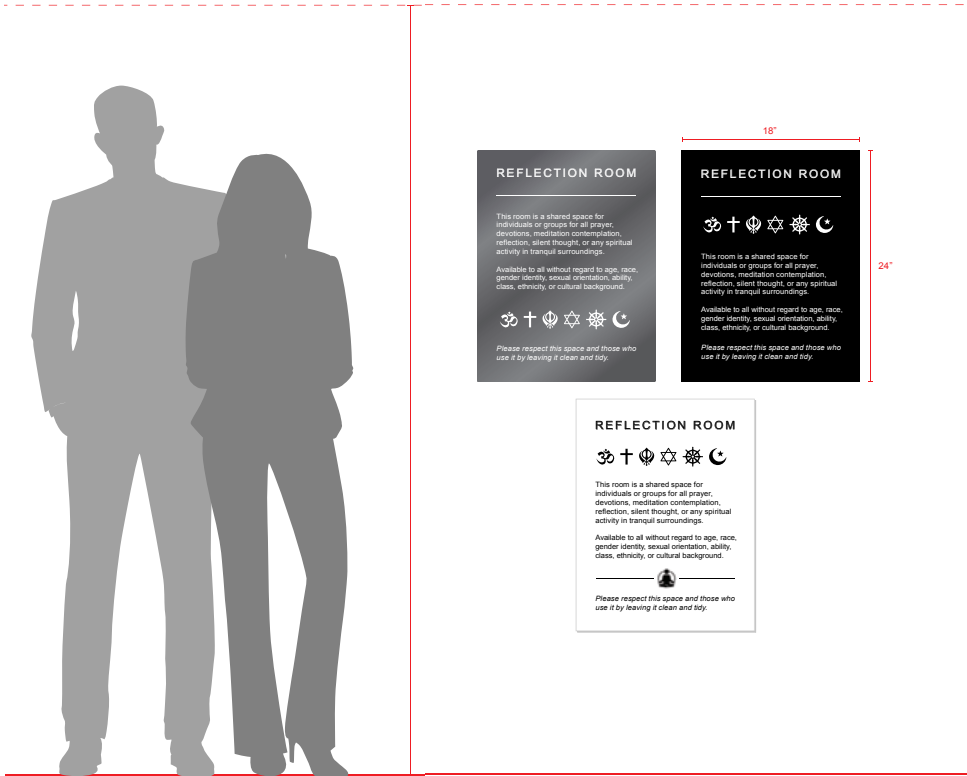
w/ internal lighting



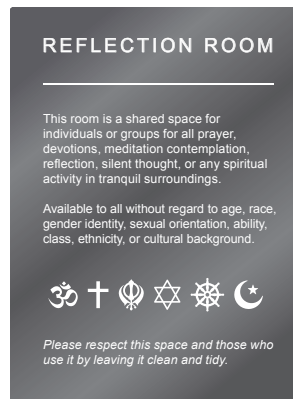
# PROTOTYPE



## PROTOTYPE SIGNAGE (CONCEPTUAL)



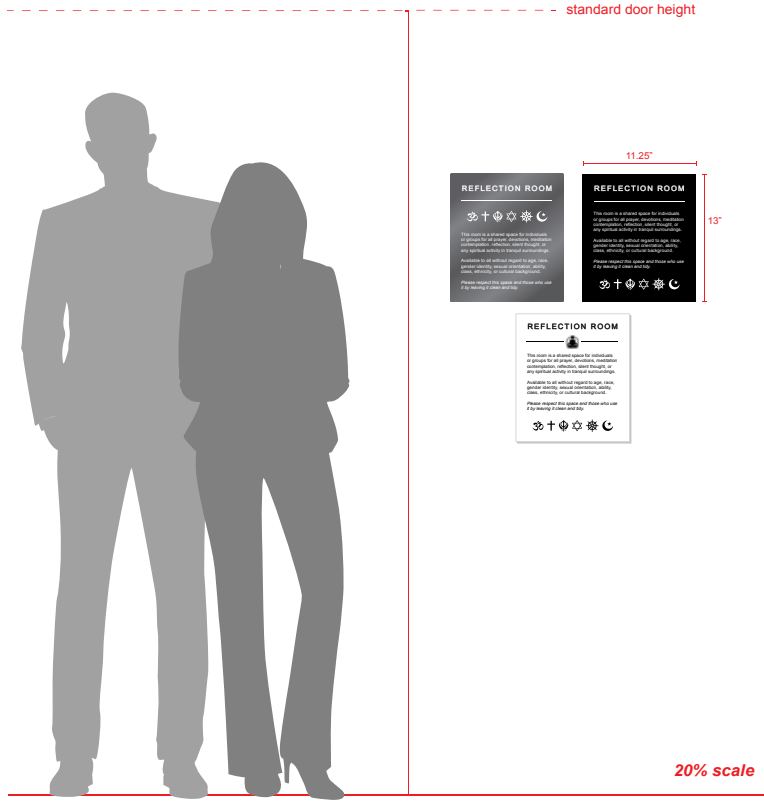
ENLARGED



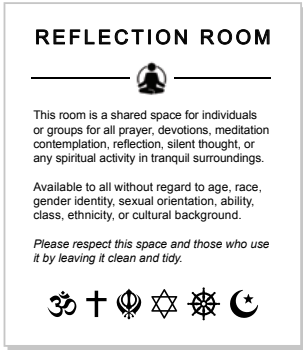
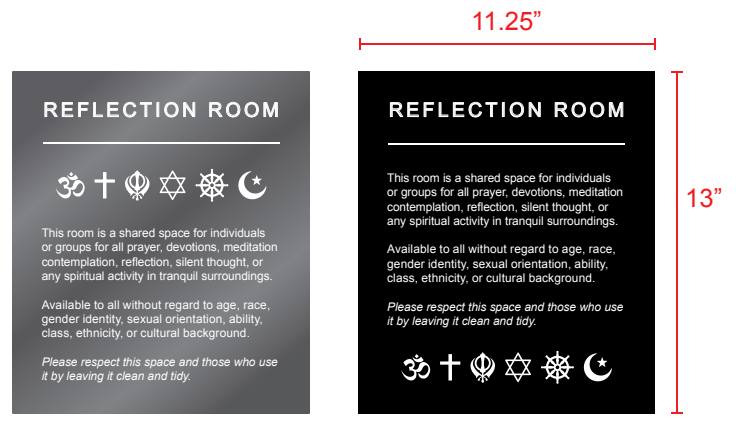
# PROTOTYPE



## PROTOTYPE SIGNAGE (CONCEPTUAL)

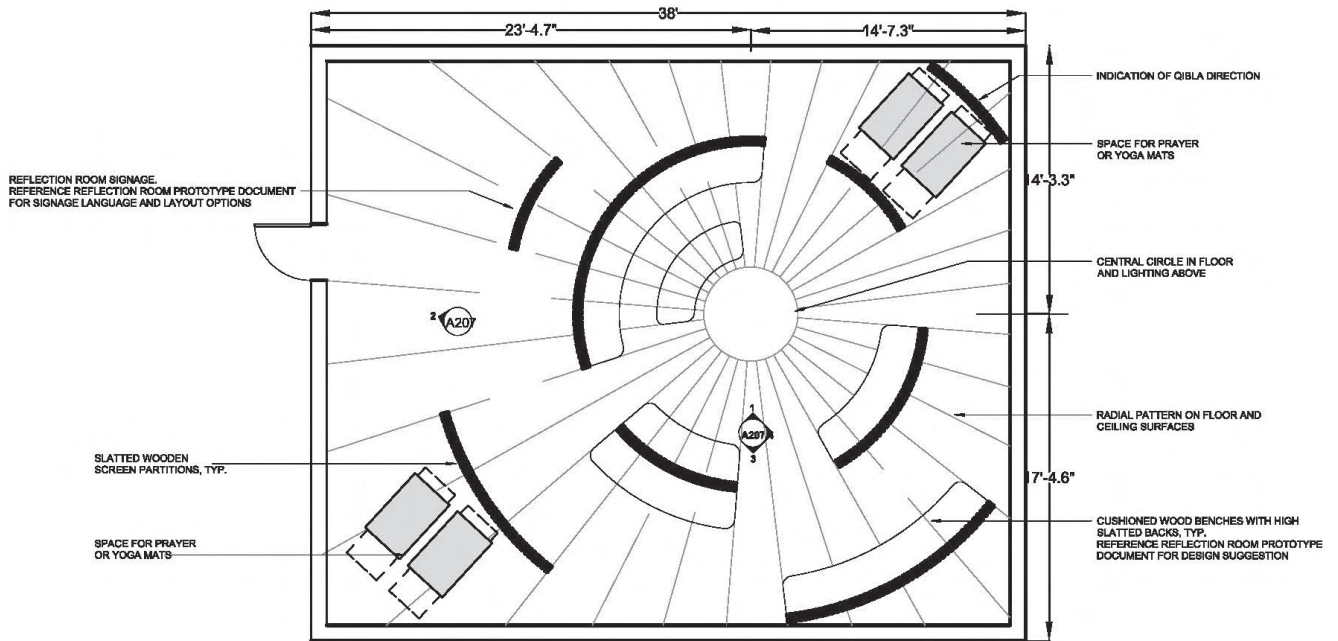


ENLARGED

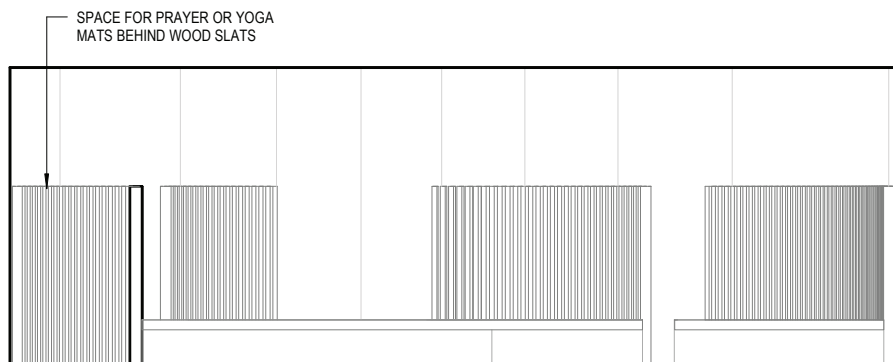


# PROTOTYPE

## PROTOTYPE FLOOR PLAN 2



## PROTOTYPE ELEVATION



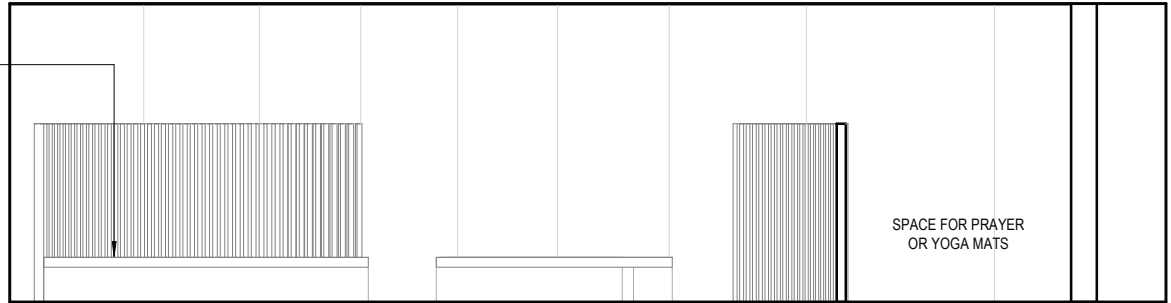
INTERIOR ELEVATION - 4

# PROTOTYPE



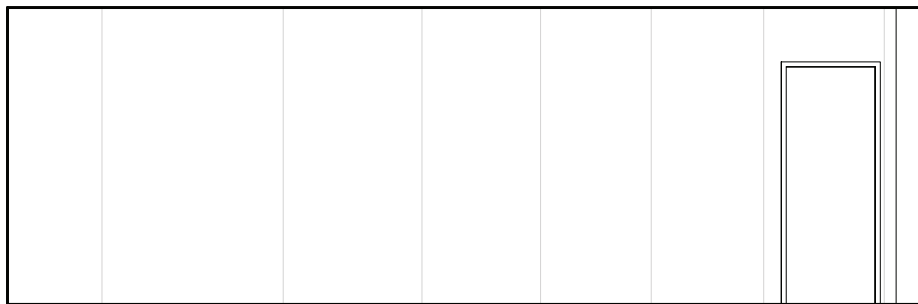
## PROTOTYPE ELEVATION

CUSHIONED WOOD BENCHES WITH HIGH SLATTED BACKS, TYP.  
 REFERENCE REFLECTION ROOM PROTOTYPE DOCUMENT FOR DESIGN SUGGESTION



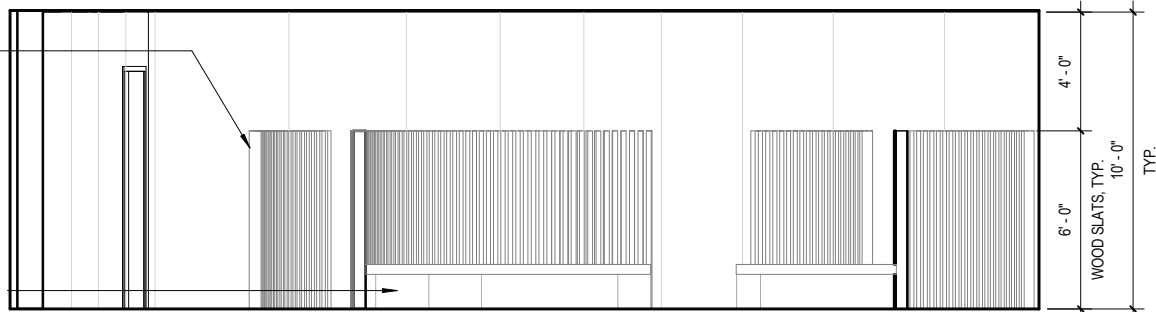
SPACE FOR PRAYER  
 OR YOGA MATS

INTERIOR ELEVATION - 3



INTERIOR ELEVATION - 2

SLATTED WOODEN SCREEN PARTITIONS, TYP.



4'-0"

6'-0"

WOOD SLATS, TYP.  
 10'-0"

TYP.

CUSHIONED WOOD BENCHES WITH HIGH SLATTED BACKS, TYP.  
 REFERENCE REFLECTION ROOM PROTOTYPE DOCUMENT FOR DESIGN SUGGESTION

INTERIOR ELEVATION - 1



