

MASSPORT PUBLIC TOILET ROOM

Design Standards



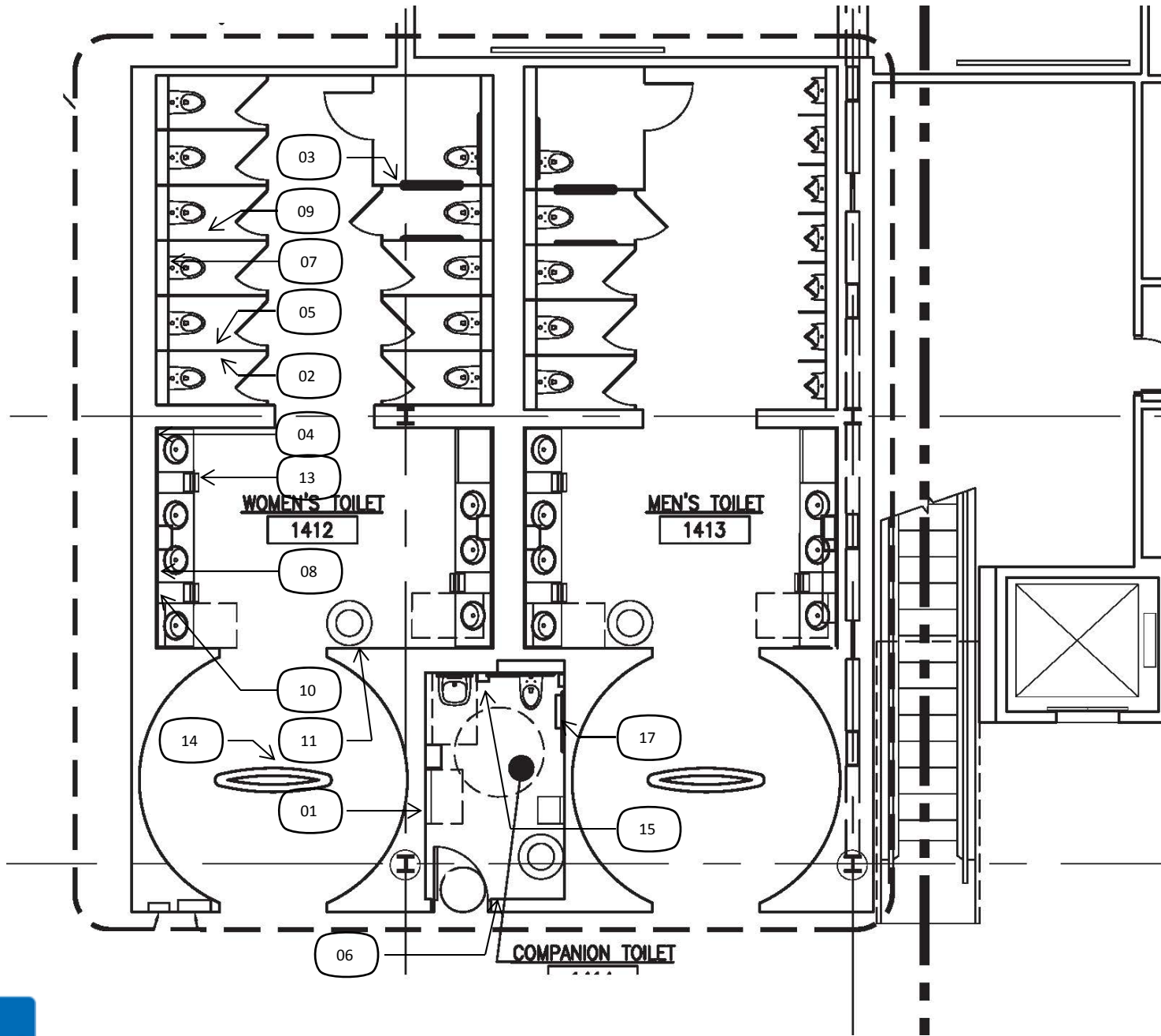
November, 2018



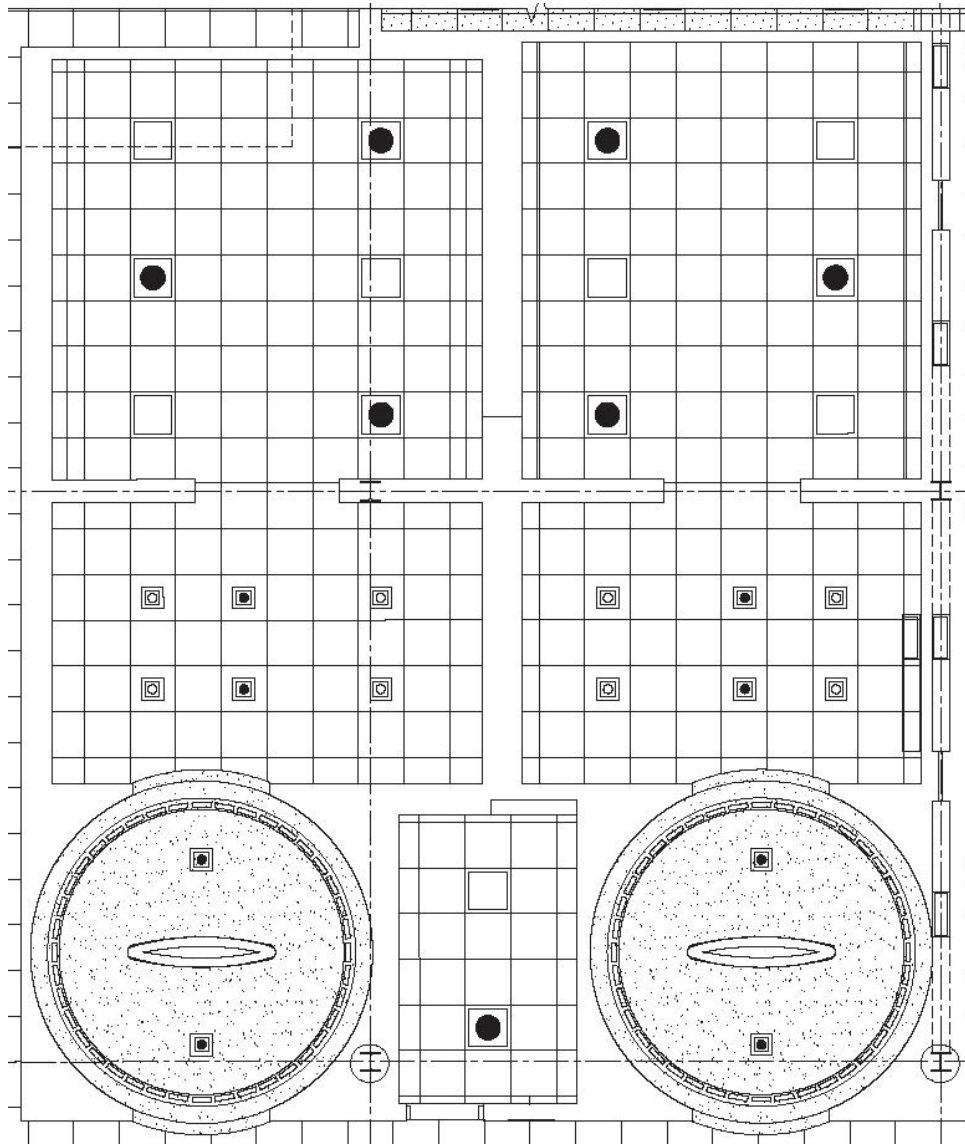
Public Restroom Standards – 2016

	MFG	Model #	Description
Faucets	TOTO	TEN40AWV205	Self generating ecopower system sensor faucet, standard spout with 10 second discharge
Faucets- Comp. Care only	TOTO	*TEL5GG10	*Gooseneck ecopower faucet
Hand Dryers	Dyson	Air Blade A802	
Lavatories- Comp Care only	*American Standard	*954	*Murro universal design lavatory
Flushometers	TOTO	TET1LN	High efficiency toilet ecopower flushometer valve
Toilets	TOTO	CT 708E(G)	Wall mounted flushometer toilet
Urinals	TOTO	UT 447E(V)	Low consumption washout urinal
Lighting	Finelée	HPK-A-LED-2-2-DCO-LED 30-3500K-277-SC-C1/C3-6LG	2x2 recessed LED light fixture
Accessories	ASI	8523AC	Hard wired Paper Towel Dispenser
Soap	Supply works	REN02479	Through counter touch free chrome foam soap dispenser
*Soap	*AmSan	*REN03551-CT	*Wall mounted foam soap dispenser (Comp. care rooms only)
Seat covers	Bobrick	B4221	Neat Seat Dispenser
Toilet Paper disp.	Bobrick	B2992	Toilet Paper Dispenser
Air Freshener	Renown	REN03551-CT	Liquid pump air freshners
Sanitary Napkin	Bobrick	B270	Sanitary Napkin Disposal
Grab Bars	Bobrick	B5906	SS Grab Bars
Coat Hooks	Bobrick	B212	Coat Hooks
**Waste receptacle	**Bobrick	**B2750	**Floor standing stainless steel waste receptacle. Post security only
Bomb Barrel	American Innovations	Model P6	Pre-security only
*Diaper Changing	*Bobrick	*KB11G-SSVM	*Comp. Care only
Ceilings	Chicago Metallic	Planostile	2x2 metal panel, lay in reveal edge, 44 satin silver, E pattern
Toilet Partitions	Stainless Steel Floor Supported Urinal & Toilet partitions/plasters with a solid plywood core. Stainless steel #301/304 series with 5 SM rigidized diamond wave pattern. All mounted using full length stainless partition (1" channel)/plaster (1-1/4" channel) brackets. All stall door hardware must be surface mounted with swing door latches and full length hinges. Hinges must be pre-greased by manufacturer. No coat hooks on the doors		
Wall Construction	Metal studs shall be a minimum of 18 gauge, track to be galvanized and sealed, and all walls secured to deck. All material fire rated per MPA Fire Marshall All wall shall have 2 layers of covering both 5/8" thick Walls shall have as the 1st layer 5/8" CDX plywood full height. 2nd wall layer shall be concrete board up entire wall. All plywood shall be fire rated All outside corners shall have 4.5" x 4.5" stainless steel corner guards up to a minimum of 4 feet		
Countertops	Countertops to be a light colored solid surface with seamless molded sinks. Color to be the entire thickness.		
Exhaust			
Notes	* Comp. Care rooms only ** Post security only		

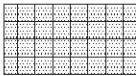




Typical Floor Plan




RCP Legend

 ACT-1 2'X2' CEILING TILE. SEE SPECIFICATION.

 GYPSUM WALL BOARD. SEE SPECIFICATION.

LIGHTING LEGEND

 LR1/FR2 WITH BATTERY BACK-UP POWER (SEE ANNOTATION)

 LR1/FR2/LR3 (SEE ANNOTATION)

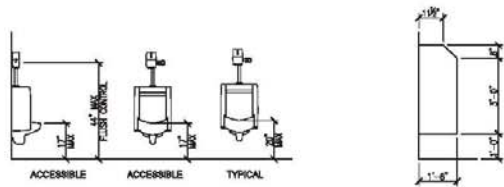
 RC-11

 PC-1

 LR-2

 LR-2 WITH BATTERY BACK UP POWER

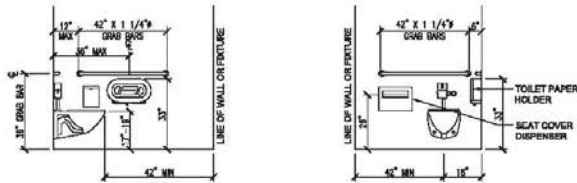




NOTE: MIN. MOUNTING HEIGHT: 15" AFF (ACCESSIBLE)

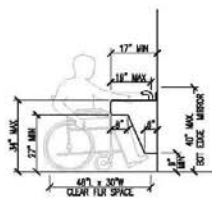
URINAL MOUNTING HEIGHTS

URINAL SCREEN

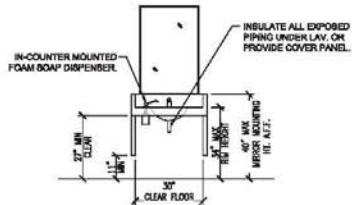


FLUSH LEVER SHALL BE LOCATED AT WIDE SIDE OF WC, NO HIGHER THAN 44" AFF.
GRAB BARS SHALL BE 1 1/2" DIA (1 1/4" MIN)
PROVIDE 1 1/2" MIN CLEARANCE BEHIND & BELOW GRAB BARS

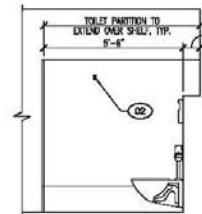
ACCESSIBLE ACCESSORY MOUNTING AT TOILET STALL



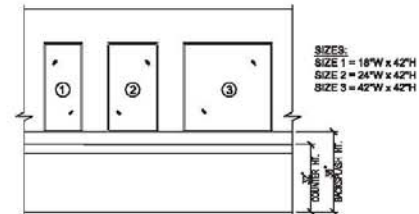
ACCESSIBLE CLEARANCES



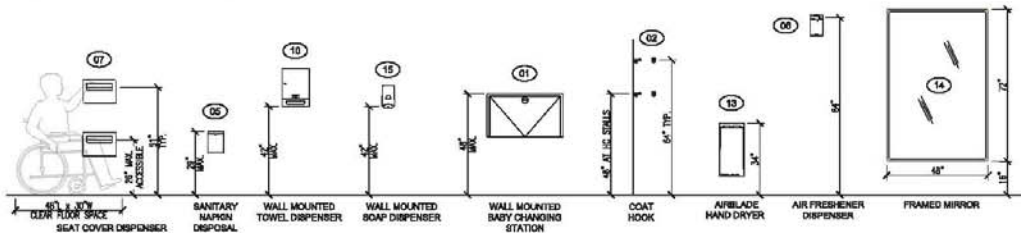
ACCESSIBLE CLEARANCES



TYPICAL TOILET PARTITION



FRAMED MIRROR SIZES



1. MAXIMUM MOUNTING HEIGHTS (48" OR 64") FOR OPERATING PARTS OF MISCELLANEOUS ACCESSORIES, INCLUDING: ELECTRICAL SWITCHES AND CONTROLS.

ACCESSORY MOUNTING HEIGHTS

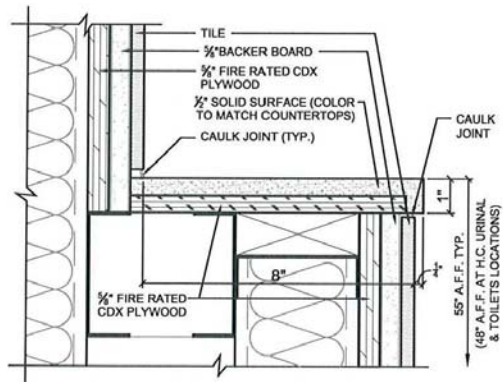
TOILET ACCESSORY SCHEDULE

KEY	DESCRIPTION	REMARKS
01	BABY CHANGING STATION	WALL MOUNTED AT COMPANION CARE RESTROOMS ONLY
02	COAT HOOK WITH BUMPER	MOUNTED ON PARTITION / WALL BEHIND DOOR AT MOST LOCATIONS WHERE DOOR SWINGS INTO STALL. ONE PER STALL.
03	GRAB BARS - 42" LONG	PEENED GRIP ON ALL GRAB BARS
04	MIRROR - FRAMED	STEEL FRAME (1/2") - LOCATED OVER COUNTERTOPS, TYPICAL (THREE TYPICAL SIZES)
05	SANITARY NAPKIN DISPOSAL	SURFACE MOUNTED W/ HINGED LID - ONE PER STALL IN WOMENS ROOM
06	AIR FRESHENER DISPENSER	WALL MOUNTED
07	SEAT COVER DISPENSER	SURFACE MOUNTED - ONE PER STALL
08	LIQUID SOAP DISPENSER	UNDERCOUNTER / COUNTERTOP MOUNTED
09	TOILET TISSUE DISPENSER	SURFACE MOUNTED - TWIN JUMBO ROLL - ONE PER STALL
10	AUTOMATIC PAPER TOWEL DISPENSER	WALL MOUNTED - CENTERED BETWEEN SINK LOCATIONS OVER COUNTERTOP, SEE NOTE 7 BELOW.
11	BOMB BARREL (WASTE RECEPTACLE)	30" DIAMETER - LOCATED AT ALL PRS-SECURITY RESTROOMS
12	WASTE RECEPTACLE	FLOOR STANDING - POST-SECURITY RESTROOMS ONLY - UNDER COUNTER (NO COVER)
13	HAND DRYER	TOUCH FREE INFRA-RED ACTIVATION DRYER
14	MIRROR - FRAMED	BRUSHED STAINLESS STEEL FRAME (1") - FULL LENGTH MIRROR
15	FOAM DISPENSER	WALL MOUNTED - COMPANION CARE ROOMS ONLY
16	WASTE RECEPTACLE	FLOOR STANDING w/ COVER - POST SECURITY RESTROOMS ONLY
17	FOLD DOWN BENCH	WALL MOUNTED AT COMPANION CARE RESTROOMS ONLY, U.N.O.

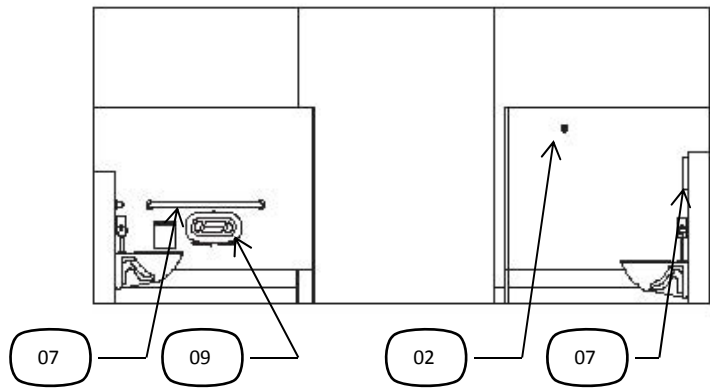
NOTE:

- ALL ACCESSORIES TO BE STAINLESS STEEL w/ SATIN FINISH U.N.O.
- REFER TO FLOOR PLAN, INTERIOR ELEVATIONS AND MILLWORK DRAWINGS FOR ACCESSORY LOCATIONS.
- NOT USED
- PROVIDE WOOD BLOCKING IN WALLS TO RECEIVE ALL ACCESSORIES, MILLWORK, FASTENERS AND TOILET PARTITIONS.
- VERIFY ALL MOUNTING HEIGHTS AND CLEARANCES WITH APPLICABLE BUILDING CODES.
- SHIM ACCESSORIES AS REQUIRED TO LAY FLAT WHERE ACCESSORIES OCCUR OVER SOLID SURFACE WALL TRANSITION STRIP OR WALLS WITH PARTIAL HEIGHT TILE.

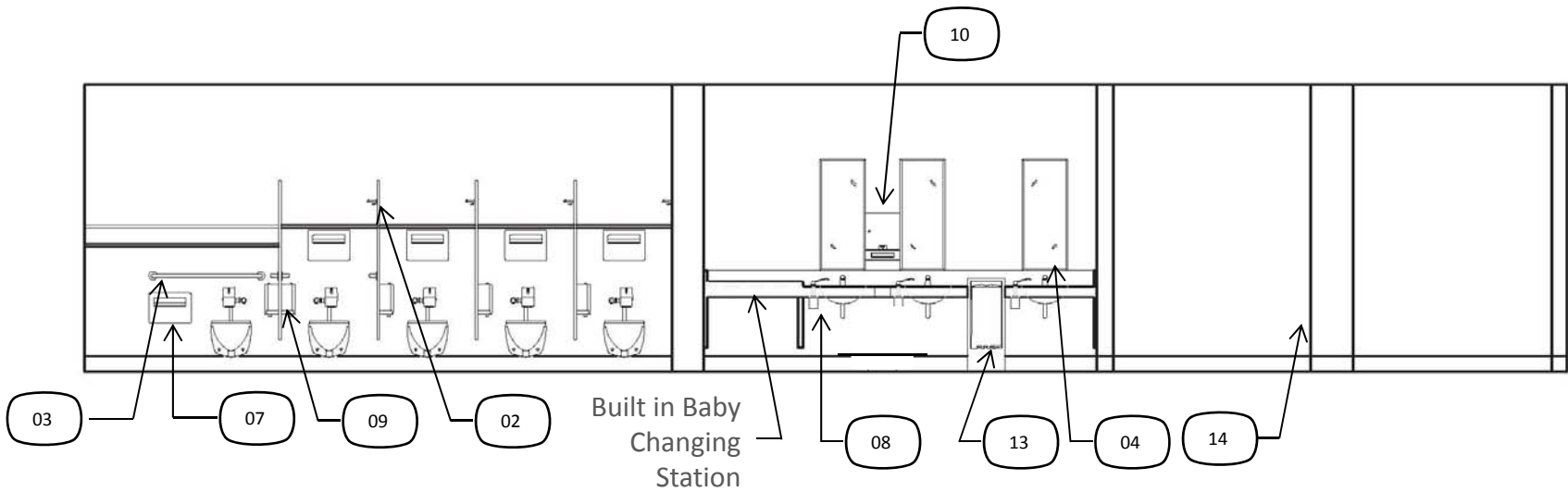




Shelf Detail



Interior Elevation



Interior Elevation



PUBLIC SERIES

Auto faucet curved

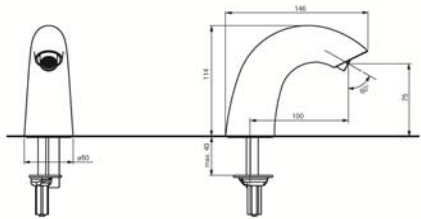
DE Automatic sensor/activated spout
 DF automatic sensor/activated spout cover
 FF floor-mounted sensor/activated spout
 FS 90° automatic sensor



PRODUCT DETAILS	
Product code	TN1809VCP
EAN code	40 50965 01106 2
Size	ø Spout 180mm (7.14 in)
Weight	0.62 kg
Colour	Chrome
Technologies	Self Powered
TO BE COMBINED WITH	
Single water unit (2L/min)	TN1809VUS
Thermostatic unit (2L/min)	TN1810VUS

Weights and measurements shown may be subject to small variations in any fabrication.

TECHNICAL DRAWINGS



usa.toto.com

TOTO

Faucet

TOTO.

TEL3GG & TEL5GG Series

Gooseneck EcoPower® Faucet

FEATURES

- Hydropower self-generating system
- Sensor faucet with aerated flow
- Self-adjusting faucet with control box and mounting hardware, less supply lines
- 1/2" water supply male threaded
- NSF compliant
- Single hole mount

MODELS

- TEL3GG1MCP - Single Supply**
Discharge: On-demand. Up to 10 seconds while activated.
- TEL3GG1MCP - Thermal Mixing**
Discharge: On-demand. Up to 10 seconds while activated. Controller/Mixer #: TN18-10V510
- TEL3GG6MCP - Single Supply**
Discharge: On-demand. Up to 60 seconds while activated.
- TEL3GG6MCP - Thermal Mixing**
Discharge: On-demand. Up to 60 seconds while activated. Controller/Mixer #: TN18-10V560
- Optional Accessories:**
1.0 gpm Laminar Flow Nozzle: TH55E/DV432
TN17V1005 - 4" cc Cover Plate
712441RCL - 8" cc Cover Plate

COLORS/FINISHES

- PCP Polished Chrome

CODES/STANDARDS

- Exceeds mandatory baseline, 0.20 gallon/cycle, of California Green Building Code, CALGreen, by using TOTO faucets with 10 second cycle.
- Meets or exceeds ASME A112.18.1/CSA B125.1, NSF 61, and ASSE 1070
- Certifications: IAPMO/CUPC, ASSE, State of Massachusetts, and others
- Code Compliance: UPC, IPC, NSPC, NPC Canada, and others
- Legislative compliance: California AB 1853 & Vermont S.152, and City of Los Angeles Water Efficiency Ordinance
- ADA compliant.



*Note: ASSE 1070 supersedes ASSE 1076 for non shower point of use devices. Applies to TEL3 series products.



PRODUCT SPECIFICATION

TOTO Model # _____ Automatic infrared sensor activated gooseneck spout faucet. Anti-scald, thermal mixing chamber (thermal faucets only). Electrical components separated from spout assembly and sealed in waterproof compartments. Single hole faucet with optional 4" cc and 8" cc cover plates. All TEL3 series use an ASSE 1070 based controller module with mixing valve. TOTO faucets with 10 second cycle use 0.17 gallon/cycle which is 15% below CALGreen's baseline.

Faucet- Comp. Care

American Standard

BARRIER FREE

MURRO™ UNIVERSAL DESIGN WALL-HUNG LAVATORY

- Vitreous china
- Rear overflow
- Recessed self-draining deck
- For concealed arm or wall support
- Shown with optional vitreous china shroud/ knee contact guard 0059.020 available

- 0954.000** Faucet holes on 102mm (4") Ctrs (illustrated)
- 0954.023** Faucet holes on 102mm (4") Ctrs + Extra right-hand hole
- 0954.021** Faucet holes on 102mm (4") Ctrs + Extra left-hand hole
- 0958.000** Faucet holes on 203mm (8") Ctrs
- 0955.000** Center hole only
- 0955.023** Center hole + Extra right-hand hole
- 0955.021** Center hole + Extra left-hand hole

Nominal Dimensions:
559mm (22") deep, 540mm (21-1/4") wide

Bowl sizes:
394mm (15-1/2") wide, 343mm (13-1/2") front to back, 127mm (5") deep

- 0059.020 Shroud/Knee Contact Guard** (Vitreous China)(Must be specified separately)

Compliance Certifications - Meets or Exceeds the Following Specifications:

- ASME A112.19.2 for Vitreous China Fixtures

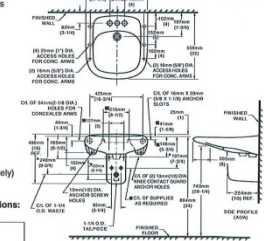
- To Be Specified:**
- Color: White Bone U. Silver
 - Optional Vitreous China Shroud/Knee Contact guard: 0059.020
 - Faucet
 - Faucet Finish
 - Supply: 1/4" Trap
 - Nipple

*See faucet section for additional models available

NOTE: THESE ARE AMERICAN WITH BARRIERS ACT CODE-LINES AND ANSI ACCESSIBLE AND USABLE BUILDINGS AND FACILITIES - CHECK LOCAL CODES.
 Top of bowl rim mounted 86mm (3 3/8") from finished floor.
 For Universal Design Options, top of rim may be mounted at 83mm (3 1/4") from finished floor to meet ADA and ANSI A117.1 requirements. Check local codes.

© 2009 American Standard Inc.

MURRO™ UNIVERSAL DESIGN WALL-HUNG LAVATORY
VITREOUS CHINA



SEE REVERSE FOR ADDITIONAL ROUGHING-IN DIMENSIONS

NOTES:
 1. LOCATE KEY ANGLE STOPS, LEGS WALL ESCUTCHEONS, SUPPLIES INCLUDES. DIMENSIONS SHOWN FOR LOCATION OF SUPPLIES AND 3" TRAP ARE SUGGESTED.
 2. CHINA TUBES MUST BE CUT TO 8mm (5/8") FOR PROPER INSTALLATION.
 3. CONTACT GUARD/SHROUD NOT INCLUDED AND MUST BE ORDERED SEPARATELY.
 4. DIMENSIONS FOR REINFORCEMENT ONLY, ACTUAL DIMENSIONS MUST BE TAKEN FROM THE FITTINGS NOT INCLUDED AND MUST BE ORDERED SEPARATELY.
 5. REINFORCEMENT FOR ALL WALL ESCUTCHEONS.
 6. INSTALLATION INSTRUCTIONS SUPPLIED WITH LAVATORY.
IMPORTANT: Dimensions of finish are nominal and may vary within the range of tolerances established by ANSI Standard A112.19.2. These measurements are subject to change or correction. No responsibility is assumed for use of suspended or model pages.

J59

Revised 5/06

Lavatory- Comp. Care only



Cut Sheets

TOTO.

UT447E(V)

0.5GPF Low Consumption Washout Urinal

FEATURES

- Compact urinal with concealed integral trap
- Washout flush action with 3/4" top or back spud inlet
- 0.5 GPF with any flush valve shown below

MODELS

- UT447E
Urinal with 3/4" top spud inlet
- UT447EV
Urinal with 3/4" back spud inlet

ADDITIONAL ITEMS (sold separately)

- THU3017
Stainless Steel Urinal Drain Cover

RECOMMENDED FLUSH VALVES		
UT447E		UT447EV
EcoPower	Manual	EcoPower
TEU1LN12#CP	TMU1LN12#CP	TEU2LN11#SS
		TEU3LN11#SS

COLORS/FINISHES

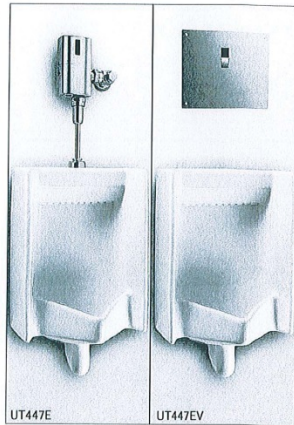
- Standard
#01 Cotton
#03 Bone
#12 Sedona Beige

PRODUCT SPECIFICATION

The wall-mounted, ADA compliant, low consumption washout urinal shall be 0.5GPF/1.9LPF when paired with a 0.5GPF flushometer valve and 1.0GPF/3.8LPF when paired with 1.0GPF/3.8LPF flushometer valve. Urinal specified shall be model UT447E.

CODES/STANDARDS

- Meets and exceeds ASME A112.19.2/CSA B45.1,
- Certifications: IAPMO(cUPC), State of Massachusetts, City of Los Angeles
- Code compliance: UPC, IPC, NSPC, NPC Canada, and others
- Legislative compliance: California AB715, California Green Building Code
- ADA compliant



Urinal



TOTO.

TET1LN Series

High-Efficiency Toilet EcoPower®
Flushometer Valve, 1.28 gpf

FEATURES

- Hydropower self-generating system
- Electronic flushometer valve, neutral rough-in, complete with 1" angle stop and 1-1/2" vacuum breaker set
- 1.28 gpf or less
- Manual override button
- 24 hour automatic flush for trap seal protection

MODELS

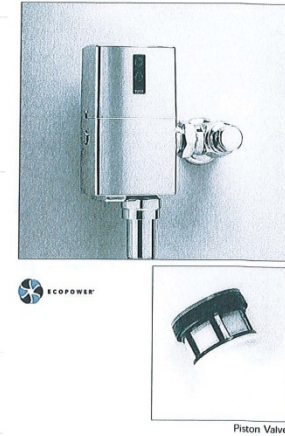
- TET1LN#CP
Valve only, Left and right rough, Polished Chrome finish
- TET1LN32#CP (1-1/2" Vacuum breaker)
Left and right rough, Polished Chrome finish
Complete set supplied with:
Vacuum breaker & angle stop set - VB9CP-32
• 1" Angle stop - 10077L3
• 1-1/2" Vacuum breaker - 10075T1
• Spud nut & escutcheon - 71051N16
• Sweat solder kit - TH559EDVSJ3
- Optional Part:
Z-4000-J - Adapter for ground joint angle stops

COLORS/FINISHES

- #CP Polished Chrome

CODES/STANDARDS

- Meets or exceeds ASSE 1037, CSA B125.3
- Certifications: IAPMO(cUPC), ASSE, State of Massachusetts, City of Los Angeles, and others
- Code Compliance: UPC, IPC, NSPC, NPC Canada, and others
- ADA compliant



PRODUCT SPECIFICATION

TOTO® Model No. _____
Automatic infrared sensor activated, toilet flush valve. Heavy-duty zinc die cast cover with polished chrome finish. Vandal resistant hex head screws. Low water consumption of 1.28 gallons per flush. Automatic sensor adjustment on installation. Manual override button incorporated. Piston valve and solenoid with self-cleaning mechanism. Automatic flush every twenty four hours if not used. Angle stop and vacuum breaker included with accessories. Through the use of TOTO's EcoPower® Flush Valves, using the valve 12 flushes per day will fully recharge the valve for up to 10 years.

Flushometer

Cut Sheets

Planostile™
PRODUCT GUIDE


METAL PANEL
09 53 33






 **Chicago Metallic®**
Fast. Easy. Customer Focused.®


Ceilings



Submitted by Omni-Lite  <small>THE OMNILITE COLLECTION</small>	Job Name: Massachusetts Port Authority - Renovations and Improvements at Terminal B	Catalog Number: HPR-A-LED-2X2-DCO-LED-SO-3500K-277-SC-C1/C3-6LG Notes: Factory drawings will be provided	Type: LR1 <small>OMN13-2662</small>
---	---	---	--

LED FINELITE









HPR-A (Angled) HPR-F (Flat)
HPR-LED uses patent pending technology

DESCRIPTION

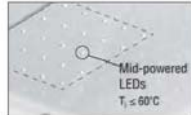
HPR-LED is a highly effective recessed luminaire delivering excellent visual comfort and outstanding performance for offices, schools, healthcare, and retail applications. Advanced optical designs make HPR-LED a powerful solution for low-ceiling applications and eliminate the shadows common on other LED recessed products. HPR-LED RoHS compliant.



GLARE-FREE ILLUMINATION:
A glare-free experience is attained with mid-powered LEDs properly distributed and paired with a precise diffuser to eliminate pollution.



100% SERVICEABLE FROM BELOW:
The light engine and driver can be easily changed from below ceiling – and it's simple to install.



THERMAL MANAGEMENT:
Mid-powered LEDs allow heat to be fully dissipated without the need for additional heat sinks.

ORDERING GUIDE
Sample Number: HPR - A - 2x2 - DCO - LED-SO - 4000K - 277V - SC - C1 - Q80

Finelite Series: HPR	Luminaire Style: (A-Angled) (F-Flat)	Size (2x2)	Center Optic: (S-CO-Skirted, RCO-Round)	Light Engine: (L-LED-SO)	LED Color Temperature: (3000K) (3500K) (4000K)	Voltage (277)	Circuiting: (SC-Skirt) (RCO)	Mounting: (C1-Ceiling) (C3-Wall) (Q8-Flush) (Q8-Flush) (Q8-Flush) (Q8-Flush)	Integrated Sensors: (O80-Daylight, O80-Occupancy, O80-Safety)
----------------------	--------------------------------------	------------	---	--------------------------	--	---------------	------------------------------	--	---

* SO - Standard Output 3480 lumens (4000K)

Confirm quantity of fixtures that require each mounting option specified.

Finelite, Inc. • 30500 Whipple Road • Union City, CA 94587-1530 • 510 / 441-1100 • Fax 510 / 441-1510 • www.finelite.com
Due to continuing product improvements, Finelite reserves the right to change specifications without notice. Please visit www.finelite.com for most current data.

High Performance Recessed (HPR-LED) 2x2 Standard Output (SO)

BUY AMERICAN ACT OF 2009 COMPLIANT

Date:

Project:

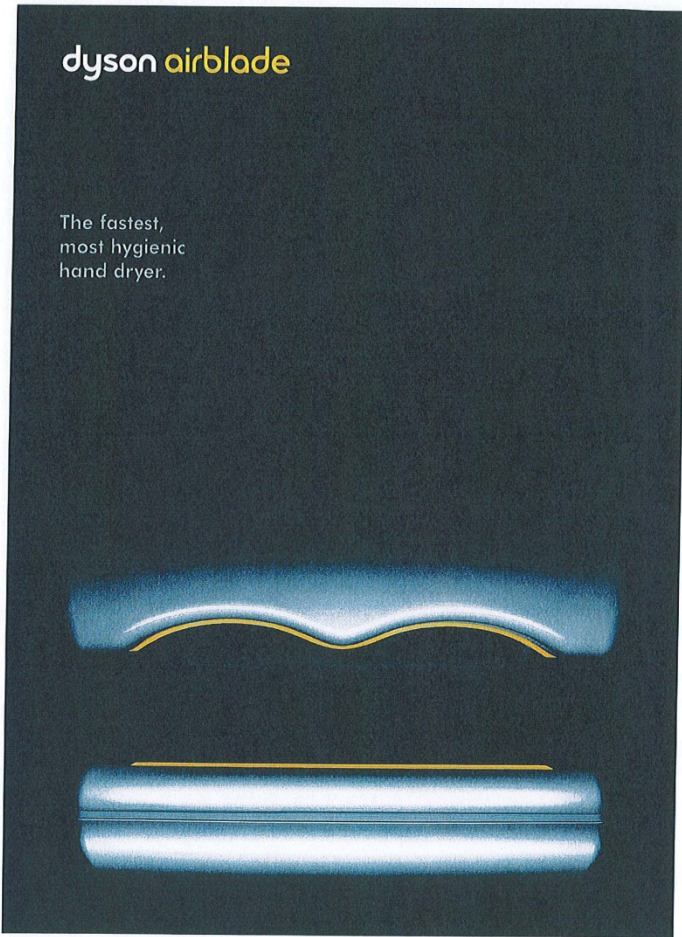
Type:

Comments:

Fixtures provided with "LL" reduced lumen output - 2400 lumens.

Lighting

Cut Sheets



Hand Dryer



	AMERICAN SPECIALTIES, INC. 441 Saw Mill River Road, NY 10701 (914) 478-9000 • (914) 478-0688 www.americanspecialties.com	MODEL No: 8523AC
		ISSUED: 10/09
		REVISED:

SURFACE MOUNTED AUTOMATIC ROLL PAPER TOWEL DISPENSER

FRONT VIEW

SIDE VIEW

NOTE: ALL DIMS INCH (MM)

SPECIFICATION

Surface Mounted Automatic Roll Paper Towel Dispenser shall hold and dispense one 8" wide x 8" diameter (203 x 0203) standard towel roll up to 800 ft. (244m) long and one 8" wide (203) stub roll up to 4" diameter (Ø102). Automatic Touchless Roll Towel Dispenser shall be powered by C-UL-US and CE approved internal low-voltage adapter (supplied) using 110-240VAC, 50/60 Hz and providing output of 5VDC @ 1A and shall operate automatically to activate towel dispensing when hands are placed in sensor zone. At each activation unit shall feed out a length of towel selected by owner by setting length, delay and paper saver switches. Unit shall have an internal towel cut-off bar. Cabinet and frame shall be 22 gauge type 304 stainless steel alloy 18-8. Towel dispenser door shall be 18 gauge same grade and shall have a full return and formed sill at bottom edge for user safety. All exposed surfaces shall have satin finish protected by PVC film easily removed after installation. Door shall be attached to cabinet at side with a full-length 3/16" dia. (Ø 4.8) stainless steel multi-staked piano hinge and shall be held closed with a tumbler lock keyed alike to other ASI washroom equipment. Structural assembly of all components shall be of welded construction. Cabinet shall have no exposed fastening devices or spot-welded seams.

INSTALLATION

Provide adequate in-wall reinforcement (by others) in drywall construction to hold mounted unit in-service after wall is finished. Provide appropriate anchors (by others) to suit wall and field conditions for installation onto walls other than new drywall. Mount unit on wall using № 10 or 1/4" (M5 or M6) x 1-1/2" self-tapping pan head screws (by others) or other suitable fasteners (by others) through concealed mounting holes provided. Power is supplied by code approved cable or conduit (by others) to KO at location indicated on diagram and terminated in utility duplex outlet box (provided) inside cabinet. Power required is 110-240VAC, 50/60 Hz protected by a 15A circuit breaker (by others) for low voltage adapter that draws ¼ Amp. Power adapter for dispenser unit is supplied cabled and plugged into dispenser and is plugged into duplex outlet (by others). For compliance with ICC/ANSI A-117.1-2003 and ADA Accessibility Guidelines install unit so that top edge of towel dispenser opening is 48" (1219) maximum above finished floor (MAX AFF) only if clear floor reach access is provided. Be advised that local codes may require mounting so that top of towel dispenser opening is 40" (1016) MAX AFF (e.g. California UBC/Title 24). For general utility install unit with top of towel dispenser opening between 49" and 56" (1245 to 1422) AFF.

OPERATION

Towels are dispensed one length at a time automatically when hands are placed in sensor zone until supply is depleted. Owner predetermines length of towel dispensed by making selections on three (3) three-position switches for length, delay, and economy. Unit may be reloaded with a full roll to automatically start when finished with an existing partial roll and will continue to feed properly when reloaded with a full roll and partial roll is transferred to stub roll position. Refill dispenser by unlocking door and replacing towel roll for an empty or partially empty unit. Dispenser supply is replenished manually on cycle determined by maintenance needs. LED indicates sensing and operation. Locking door prevents unauthorized access and roll removal.

Accessory Specialties
AMERICAN DISPENSER
Desert Ray Products
MITROUS_{INC.}

THIS MANUFACTURER RESERVES THE RIGHT TO MAKE CHANGES IN DESIGN OR DIMENSIONS WITHOUT FORMAL NOTICE

Paper Towel Dispenser

Cut Sheets

Supplyworks

RENOW® CX THROUGH-THE-COUNTER TOUCH-FREE FOAM HAND SOAP DISPENSER, CHROME, 1 DISPENSER PER CASE
 Item # RENOWCX / RENOW Part # RENOW479 / UPC Code 0793313898 / UNSPSC Code 41131708



PRODUCT OVERVIEW

Choose this touch-free, counter mounted soap dispenser for exceptional durability and high-end design. Its sleek look and solid metal construction makes it ideal for high-traffic areas and wherever reliability, image, and high-capacity volume matter.

Perfect for Almost Anywhere

- Hotels
- Casinos
- Airports
- Shopping Malls
- Sports Venues
- Performance Venues

Performance Venues

Soap Dispensers

		1 1/4" (32mm) DIAMETER STAINLESS STEEL GRAB BARS WITH SNAP FLANGE		B-5806 SERIES	
Technical Data					
Specify Finish Required: <input type="checkbox"/> Satin Finish <input type="checkbox"/> Satin finish with peneled gripping surface; add suffix .30 to model number					
HORIZONTAL		VERTICAL			
B-5806 x 12, 18, 24, 30, 36, 42, 48					
TWO-WALL WHEELCHAIR TOILET COMPARTMENT		HORIZONTAL WHEELCHAIR TOILET COMPARTMENT BAR 24 x 36		TWO-WALL TOILET COMPARTMENT BAR 42 x 54	
B-5827		B-5816		B-5827	
continued...					

The information and descriptions herein are applicable to production as of the date of this Technical Data Sheet. The manufacturer reserves the right to, at any time, make changes and improvements in designs and dimensions. Revised 2/09 508 Printed in U.S.A. © 2008 by Bobrick Washroom Equipment, Inc.

Grab Bars


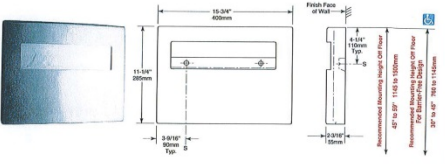
		ConturaSeries® SURFACE-MOUNTED SANITARY NAPKIN DISPOSAL		B-270	
Technical Data					
MATERIALS: Container — 18-8 S, type-304, 22-gauge (0.8mm) stainless steel. All welded construction. Exposed surfaces have satin finish. Integral finger depression for opening cover. Front of container has same degree of arc as front of cover and other Bobrick ConturaSeries washroom accessories. Radius on side edges of container match corners and edges of cover and other ConturaSeries accessories. Cover — 18-8 S, type-304, 22-gauge (0.8mm) stainless steel with satin finish. Drawn, one-piece, seamless construction. Front of cover has same degree of arc as front of container and other Bobrick ConturaSeries washroom accessories. Radius on corners and edges of cover match side edges of container and other Contura Series accessories. Secured to container with a full-length stainless steel piano-hinge.					
OPERATION: Cover flips up for disposal of sanitary napkins and for servicing container. Disposable paper liners for the container are available as an optional accessory; order Bobrick Part No. 270-12.					
INSTALLATION: For partitions with particle-board or other solid core, secure with two #8 x 3/4" (4.2 x 18mm) sheet metal screws (not furnished) at all points indicated by an S, or provide through-bolts, nuts, and washers. For hollow-core metal partitions, provide solid backing into which sheet-metal screws can be secured. If two units are installed back-to-back, then provide threaded sleeves and machine screws for the full thickness of partition. For masonry walls, provide fiber plugs or expansion shields for use with sheet-metal screws, or provide 3/16" (5mm) toggle bolts or expansion bolts. For plaster or dry wall construction, provide concealed backing to comply with local building codes, then secure unit with sheet-metal screws.					
SPECIFICATION: Surface-mounted sanitary napkin disposal shall be type-304 stainless steel with all-welded construction; exposed surfaces shall have satin finish. Front of sanitary napkin disposal shall have same degree of arc and match other Bobrick ConturaSeries® accessories in the washroom. Radius on corners and edges of sanitary napkin disposal shall complement other Bobrick ConturaSeries® washroom accessories. Cover shall be drawn, one-piece, seamless construction and secured to container with a full-length stainless steel piano-hinge. Container shall have integral finger depression for opening cover. Manufacturer's service and parts manual shall be provided to the building owner/manager upon request. Surface-Mounted Sanitary Napkin Disposal shall be Model B-270 of Bobrick Washroom Equipment, Inc., Clifton Park, New York; Jackson, Tennessee; Los Angeles, California; Bobrick Washroom Equipment Company, Scarborough, Ontario; Bobrick Washroom Equipment Pty. Ltd., Australia; and Bobrick Washroom Equipment Limited, United Kingdom.					

The information and descriptions herein are applicable to production as of the date of this Technical Data Sheet. The manufacturer reserves the right to, at any time, make changes and improvements in designs and dimensions. Revised 2/09 508 Printed in U.S.A. © 2008 by Bobrick Washroom Equipment, Inc.


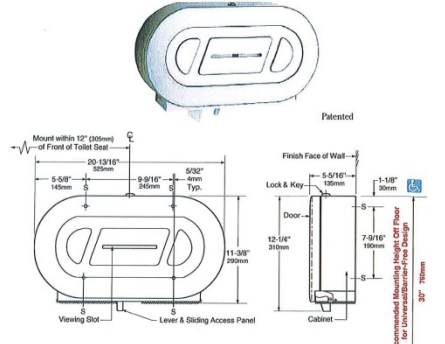
Napkin Dispensers



Cut Sheets

 Technical Data	ConturaSeries® SURFACE-MOUNTED SEAT-COVER DISPENSER	B-4221
		
<p>MATERIALS: 18-8 S, type-304, 20 gauge (1.0mm) stainless steel with satin finish. Drawn, one-piece, seamless construction. Front of dispenser has same degree of arc as other Bobrick ConturaSeries washroom accessories. Radius on corners and edges complement other ConturaSeries accessories.</p> <p>OPERATION: Dispenser holds single- or half-fold paper toilet-seat covers. Dispenser fills from bottom through concealed opening. Capacity: 250 toilet seat covers.</p> <p>INSTALLATION: Mount unit on wall or partition of toilet compartment with two screws (not furnished) at points indicated by an S. For plaster or dry wall construction, provide concealed backing to comply with local building codes and secure with #8 x 1-1/2\" (4.2 x 38mm) sheet-metal screws. For other wall surfaces, provide fiber plugs or expansion shields for use with sheet-metal screws, or provide 1/2\" (12.7mm) toggle bolts or expansion bolts. Note: Provide a 5\" (125mm) minimum clearance from bottom of dispenser to top of any horizontal projection to provide room for filling dispenser from bottom.</p> <p>SPECIFICATION: Surface mounted toilet-seat cover dispenser shall be type-304, 20 gauge (0.9mm) stainless steel with drawn, one-piece, seamless construction; exposed surfaces shall have satin finish. Front of toilet-seat cover dispenser shall have same degree of arc and match other Bobrick ConturaSeries® accessories in the washroom. Radius on corners and edges of toilet-seat cover dispenser shall complement other Bobrick ConturaSeries® washroom accessories. Unit shall have a rectangular opening for dispensing toilet seat covers and a concealed opening in bottom for filling. Capacity shall be 250 paper toilet seat covers.</p> <p>Surface-Mounted Seat Cover Dispenser shall be Model B-4221 of Bobrick Washroom Equipment, Inc., Clifton Park, New York; Jackson, Tennessee; Los Angeles, California; Bobrick Washroom Equipment Company, Scarborough, Ontario; Bobrick Washroom Equipment Pty. Ltd., Australia; and Bobrick Washroom Equipment Limited, United Kingdom.</p>		
<small>The illustrations and descriptions herein are applicable to production as of the date of this Technical Data Sheet. The manufacturer reserves the right to, and does from time to time, make changes and improvements in design and dimensions.</small>		

Seat Cover Dispensers

 Technical Data	SURFACE-MOUNTED TWIN JUMBO-ROLL TOILET TISSUE DISPENSER	B-2892
		
<p>MATERIAL: Cabinet — 18-8 S, type-304, 20 gauge (1.0mm) stainless steel with satin-finish. Equipped with a tumbler lock keyed like other Bobrick washroom accessories. Door — 18-8 S, type-304, 18 gauge (1.2mm) stainless steel with satin-finish. Drawn, one-piece, seamless construction. Wide viewing slot reveals toilet tissue supply inside cabinet. Dispensing Mechanism — High impact ABS.</p> <p>OPERATION: Door unlocks with key provided and swings down for loading dispenser. Spindles accommodate two toilet tissue rolls up to 10\" (255mm) diameter with 3\" (75mm) diameter core, or remove outer spindle (which is held in place with 3 washers) from the inner spindles to accommodate 2-1/4\" (57mm) diameter core rolls. Unique sliding access panel exposes one roll at a time for patron use, assuring uninterrupted, complete no waste use of first roll before starting the reserve roll; allows easy roll change-over. When first roll is depleted, move the lever at the bottom of dispenser to the left until sliding access panel locks in position and exposes roll on right. When door is opened for reloading, the sliding access panel automatically releases and returns to the original position on the right. Move the remaining roll to the first position on left and install a new roll on the right spindle. Wide viewing slot in door reveals the amount of toilet tissue on both rolls. Unit is designed for quick reloading.</p>		
<small>The illustrations and descriptions herein are applicable to production as of the date of this Technical Data Sheet. The manufacturer reserves the right to, and does from time to time, make changes and improvements in design and dimensions.</small>		

Toilet Paper Dispensers

